

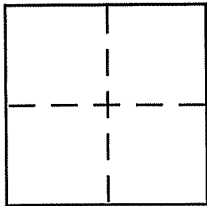
CORNER RECORD

Document Number APN 063-080-06

City of SAUSALITO

County of MARIN, California

Brief Legal Description PAR 2 23 PM 54



CORNER TYPE

Government Corner Control
Meander Property
Rancho Other
Date of Survey 6-19-06

COORDINATES (Optional)

N. _____
E. _____
Zone _____ NAD27 NAD83
NAD83 Epoch _____
Elev. _____
Vert. Datum: NGVD29 NAVD88
Meas. Units: Metric Imperial

Corner - Left as found Found and tagged Established Reestablished Rebuilt

Identification and type of corner found: Evidence used to identify or procedure used to establish or reestablish the corner:

FOUND POINTS FROM 23 PM 54 & 11 05 14
SET TAG OR WASHER: "LS 4818"

A description of the physical condition of the monument as found and as set or reset: _____

SEE OTHER SIDE FOR DESCRIPTIONS

SURVEYOR'S STATEMENT

This Corner Record was prepared by me or under my direction in conformance with the Land Surveyor's Act on 7-17-06

Signed [Signature] P.L.S. or R.C.E. No. 4818



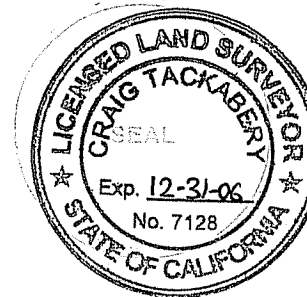
COUNTY SURVEYOR'S STATEMENT

This Corner Record was received JULY 19, 2006

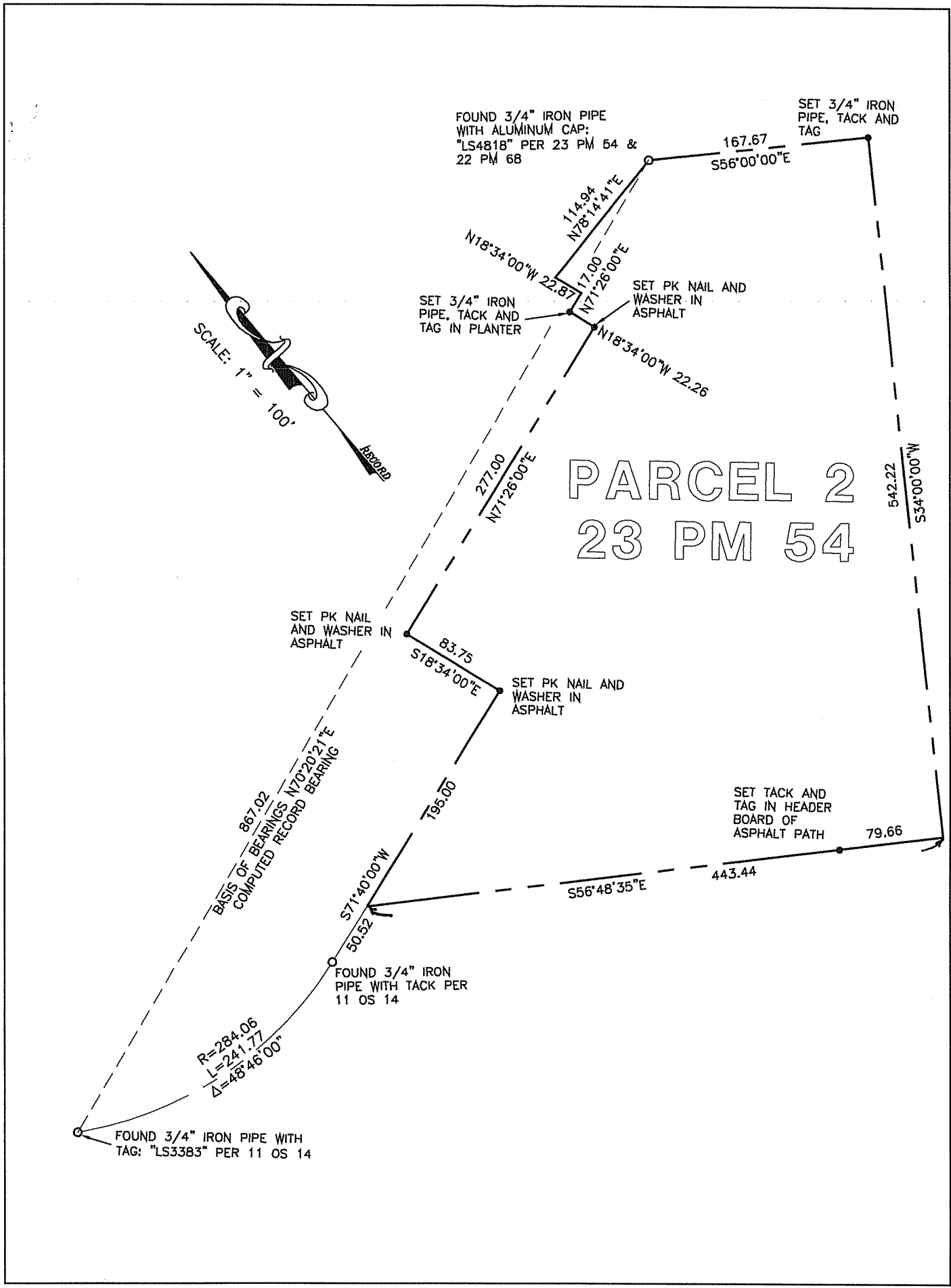
and examined and filed AUGUST 14, 2006

Signed [Signature] P.L.S. or R.C.E. No. 7128

Title COUNTY SURVEYOR



County Surveyor's Comment _____



FOUND 3/4" IRON PIPE WITH ALUMINUM CAP: "LS4818" PER 23 PM 54 & 22 PM 68

SET 3/4" IRON PIPE, TACK AND TAG

SCALE: 1" = 100'

RECORDED

SET 3/4" IRON PIPE, TACK AND TAG IN PLANTER

SET PK NAIL AND WASHER IN ASPHALT

PARCEL 2
23 PM 54

SET PK NAIL AND WASHER IN ASPHALT

SET PK NAIL AND WASHER IN ASPHALT

SET TACK AND TAG IN HEADER BOARD OF ASPHALT PATH

$R=284.06$
 $L=241.77$
 $\Delta=48^{\circ}46'00"$

FOUND 3/4" IRON PIPE WITH TAG: "LS3383" PER 11 OS 14