

CORNER RECORD

Agency Index

Document Number

County of

DPW# 19-132

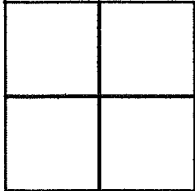
APN 60-303-10

MARIN

, California

City of Belvedere

Brief Legal Description Lot 45 of 12 RM 80



CORNER TYPE

- Government Corner Control
- Meander Property
- Rancho Other

Date of Survey 10-29-2019

COORDINATES (Optional)

- N. _____ E. _____
- Elevation _____
- Units Metric U.S. Survey Foot
- Horizontal Datum _____
- Zone _____ Epoch Date _____
- Vertical Datum _____

Complies with Public Resources Code §§8801-8819

Complies with Public Resources Code §§8890-8902

PLS Act Ref: 8765(d) 8771 8773 Other:

Corner/Monument: Left as found Established Rebuilt Pre-Construction

Found and tagged Reestablished Referenced Post-Construction

Narrative of corner identified and monument as found, set, reset, replaced, or removed:

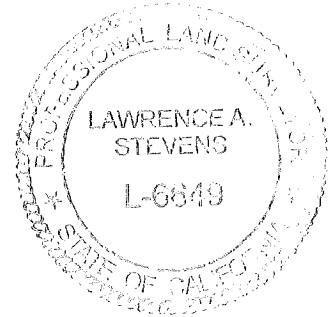
See sheet #2 for description (s):

See sheet 2

SURVEYOR'S STATEMENT

This Corner Record was prepared by me or under my direction in conformance with the Professional Land Surveyors' Act on October 31st, 2019

Signed [Signature] P.L.S. or R.C.E. No. 6649



COUNTY SURVEYOR'S STATEMENT

This Corner Record was received NOVEMBER 5, 2019

and examined and filed NOV. 21, 2019

Signed [Signature] P.L.S. or R.C.E. No. 9292

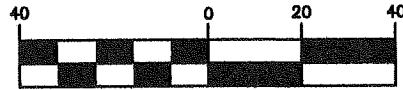
Title DEPUTY C.S.



County Surveyor's Comment _____

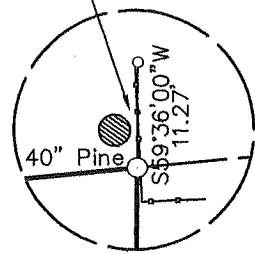
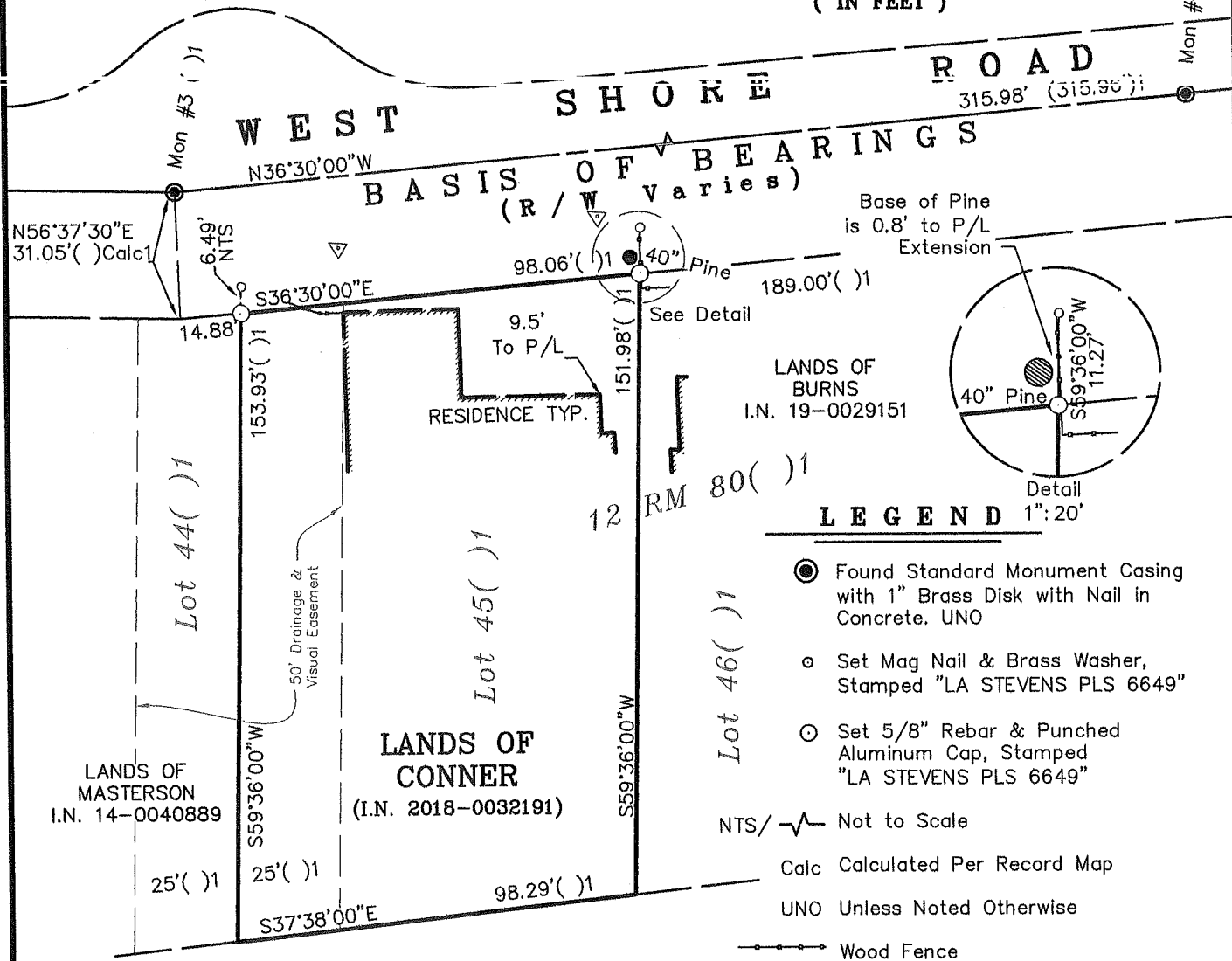
All distances shown are in feet and decimals thereof

GRAPHIC SCALE



(IN FEET)

Mon #4 ()



LEGEND

- Legend items: Found Standard Monument Casing with 1" Brass Disk with Nail in Concrete. UNO; Set Mag Nail & Brass Washer, Stamped "LA STEVENS PLS 6649"; Set 5/8" Rebar & Punched Aluminum Cap, Stamped "LA STEVENS PLS 6649"; NTS/ - Not to Scale; Calc - Calculated Per Record Map; UNO - Unless Noted Otherwise; Wood Fence; Survey Control Point.

REFERENCES

() 12 RM 80, Entitled "West Shore Subdivision No. 2" by Hutchinson, Filed July 7th 1964

Corner Record Lands of Conner

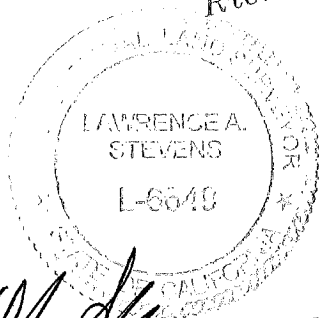
(Lot 45, 12 RM 80)

Belvedere Marin County California Scale: 1" = 40' October, 2019

L.A. Stevens & Associates, Inc.

Professional Land Surveyors * (415) 382-7713 7 Commercial Blvd., Suite 1 * Novato, CA 94949

Job # 191979



11-1-2019

Lawrence A. Stevens, PLS 6649

Copyright © Lawrence A. Stevens 2019