

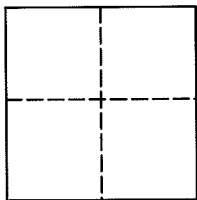
**Lands of Norby Trust**  
**Job #: 11-1338**

**CORNER RECORD**

Document Number 060-291-11

City of Belvedere, County of Marin, California

Brief Legal Description: Being the southeasterly land northwesterly lines of the lands conveyed to R. Douglas Norby and Susan Anderson-Norby 2000 Revocable Trust, recorded in Official Records at Document Number 2012-035070, recorded on June 8, 2012, as shown on that certain subdivision entitled "Map of Unit 2 West Shore Subdivision No 2", recorded in Book 12 of Maps at Page 24, Marin County Records.



**CORNER TYPE**

**COORDINATES (Optional)**

Government Corner  Control   
Meander  Property   
Rancho  Other

N \_\_\_\_\_  
E \_\_\_\_\_  
Zone \_\_\_\_\_ NAD27  NAD83   
NAD 83 Epoch \_\_\_\_\_  
Elev. \_\_\_\_\_  
Vert. Datum: NGVD29  NAVD88   
Meas. Units: Metric  Imperial

Date of Survey August 30, 2012

**Corner -** Left as found  Found and tagged  Established  Reestablished  Rebuilt

Identification and type of corner found: Evidence used to identify or procedure used to establish or reestablish the corner:  
See Page 2 of 2

A description of the physical condition of the monument as found and as set or reset:  
See Page 2 of 2

**SURVEYOR'S STATEMENT**

This Corner Record was prepared by me or under my direction in conformance with

The Land Surveyor's Act on November 19, 2012.

Signed [Signature] P.L.S. 6649



**COUNTY SURVEYOR'S STATEMENT**

This Corner Record was received NOVEMBER 26, 2012

and examined and filed JANUARY 15, 2013

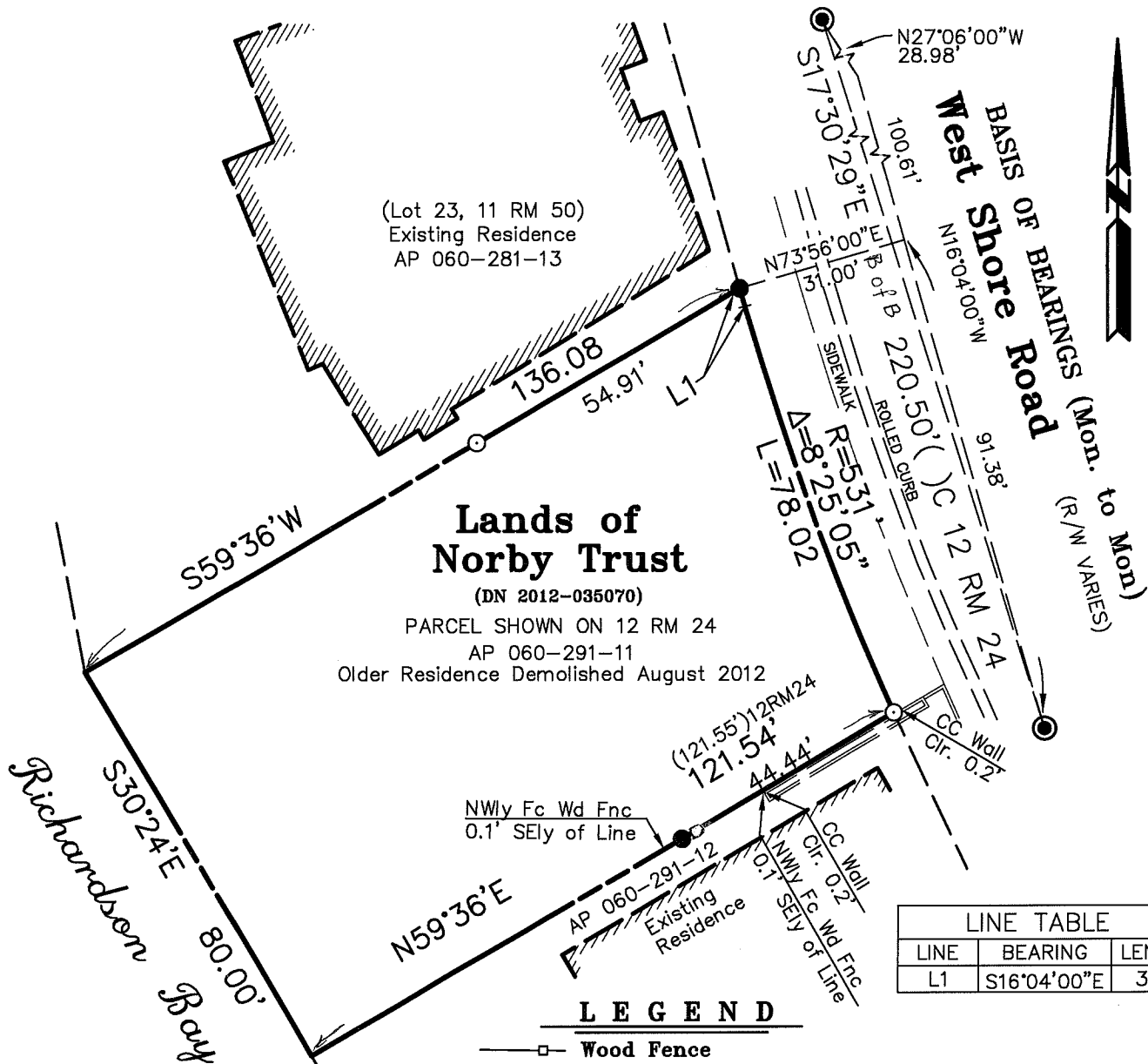
Signed [Signature] P.L.S. or R.C.E. No. 7821

Title DEPUTY COUNTY SURVEYOR

County Surveyors' Comment \_\_\_\_\_



All distances shown are in feet and decimals thereof



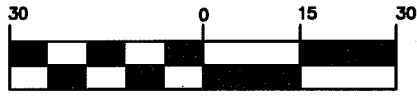
**Lands of Norby Trust**  
 (DN 2012-035070)  
 PARCEL SHOWN ON 12 RM 24  
 AP 060-291-11  
 Older Residence Demolished August 2012

LINE TABLE		
LINE	BEARING	LENGTH
L1	S16°04'00"E	3.37

**LEGEND**

- Wood Fence
- Found 3/4" Iron Pipe & Plastic Plug, "L.A. Stevens, LS 6649", per Corner Record, AP 060-281-13, filed June 13, 2007
- Set 3/4" Iron Pipe & Plastic Plug, Stamped "L.A. Stevens, LS 6649"
- Found 1 3/8" Brass Disc & Punch, In Hand Hole, Per 12 RM 24
- CC Concrete
- Clr Clear
- Fc Face
- Fnc Fence
- C Calculated

**GRAPHIC SCALE**



( IN FEET )



**Corner Record  
 Lands of  
 Norby Trust**

(DN 2012-035070)  
 Belvedere Marin County California  
 Scale: 1" = 30'  
 September 2012  
**L.A. Stevens & Associates, Inc.**  
 Professional Land Surveyors \* (415) 382-7713  
 7 Commercial Blvd., Suite 1 \* Novato, CA 94949