

L. A. Stevens & Associates, Inc.
Professional Land Surveyors
Novato, California

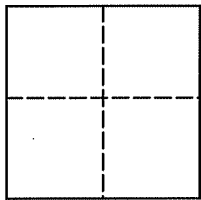
Lands of Norby
Job #: 11-1338

CORNER RECORD

Document Number 060-291-11

City of Belvedere, County of Marin, California

Brief Legal Description: Being the southeasterly line of the lands conveyed to Doug Norby and Susan Anderson-Norby, recorded in Official Records at Document Number 2010-43035, recorded on September 3, 2010, as shown on that certain subdivision entitled "Map of Unit 2 West Shore Subdivision No 2", recorded in Book 12 of Maps at Page 24, Marin County Records.



CORNER TYPE

COORDINATES (Optional)

Government Corner Control
Meander Property
Rancho Other
Date of Survey June 10, 2011

N _____
E _____
Zone _____ NAD27 NAD83
NAD 83 Epoch _____
Elev. _____
Vert. Datum: NGVD29 NAVD88
Meas. Units: Metric Imperial

Corner - Left as found Found and tagged Established Reestablished Rebuilt

Identification and type of corner found: Evidence used to identify or procedure used to establish or reestablish the corner:
See Page 2 of 2

A description of the physical condition of the monument as found and as set or reset:
See Page 2 of 2

SURVEYOR'S STATEMENT

This Corner Record was prepared by me or under my direction in conformance with
The Land Surveyor's Act on July 7, 2011

Signed [Signature] P.L.S. 6649



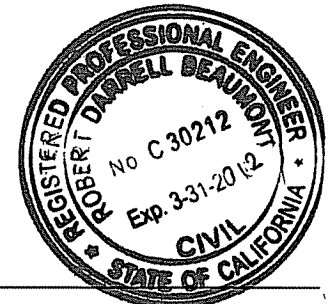
COUNTY SURVEYOR'S STATEMENT

This Corner Record was received JULY 12, 2011
and examined and filed AUGUST 4, 2011

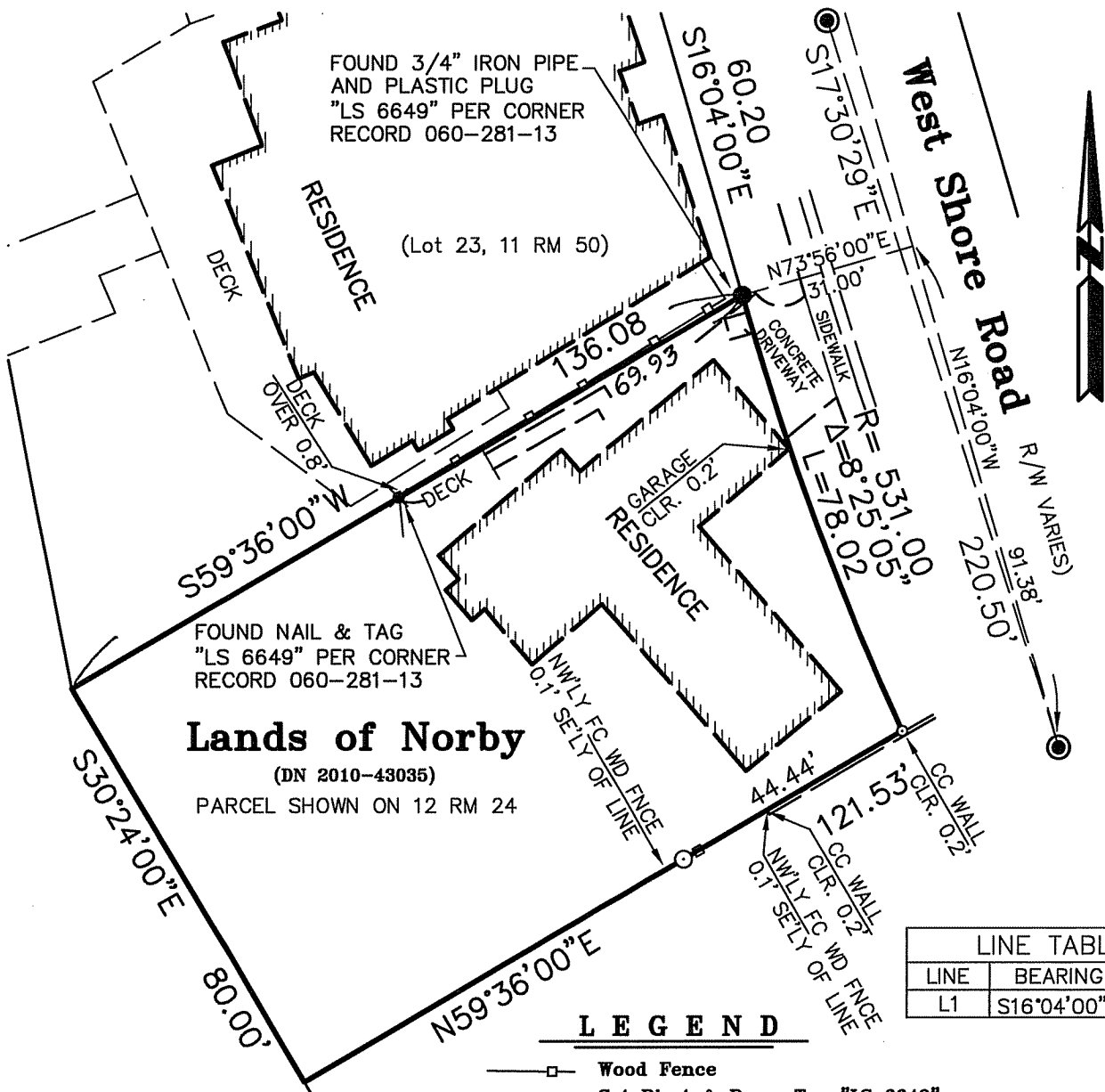
Signed [Signature] P.L.S. or R.C.E. No. 30212

Title DEP. COUNTY SURVEYOR

County Surveyors' Comment _____



All distances shown are in feet and decimals thereof



FOUND 3/4" IRON PIPE AND PLASTIC PLUG "LS 6649" PER CORNER RECORD 060-281-13

(Lot 23, 11 RM 50)

FOUND NAIL & TAG "LS 6649" PER CORNER RECORD 060-281-13

Lands of Norby
(DN 2010-43035)
PARCEL SHOWN ON 12 RM 24

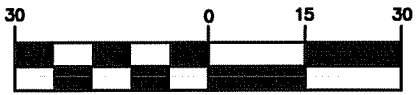
West Shore Road
R/W VARIES
N 91°04'00"W 220.50'
91.38'
S 17°30'29"E 57.30'
N 73°56'00"E 31.00'
R=531.05'
L=878.02'

LINE TABLE		
LINE	BEARING	LENGTH
L1	S16°04'00"E	3.37

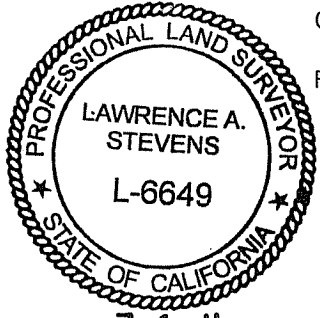
LEGEND

- Wood Fence
- Set Rivet & Brass Tag "LS 6649" in Concrete Walk
- Set 3/4" Iron Pipe & Plastic Plug, Stamped "LS 6649"
- Found 1 3/8" Brass Disc & Punch, In Hand Hole, Per 12 RM 24
- CC Concrete
- CLR Clear
- FC Face
- FNC Fence

GRAPHIC SCALE



(IN FEET)



**Corner Record
Lands of Norby**

(DN 2010-43035)
Belvedere Marin County California
Scale: 1" = 30' June 2011

L.A. Stevens & Associates, Inc.

Professional Land Surveyors * (415) 382-7713
7 Commercial Blvd., Suite 1 * Novato, CA 94949

[Signature]
Lawrence A. Stevens, PLS 6649