

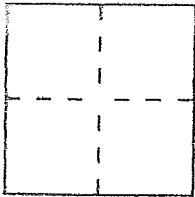
CORNER RECORD

Document Number 00-291-05

City of Belvedere

County of Marin, California

Brief Legal Description Lot 30 of 12 RM 2A



CORNER TYPE

- Government Corner
- Meander
- Rancho
- Date of Survey \_\_\_\_\_
- Control
- Property
- Other

COORDINATES (Optional)

N. \_\_\_\_\_  
 E. \_\_\_\_\_  
 Zone \_\_\_\_\_ Datum \_\_\_\_\_  
 Elev. \_\_\_\_\_

Corner — Left as found  Found and tagged  Established  Reestablished  Rebuilt

Identification and type of corner found: Evidence used to identify or procedure used to establish or reestablish the corner:

Found Original Street Monuments per 12 RM 2A

A description of the physical condition of the monument as found and as set or reset:

Set nail & tags LS 5290 and set iron bar LS 5290

SURVEYOR'S STATEMENT

This Corner Record was prepared by me or under my direction in conformance with the Land Surveyors' Act on April 28, 2016

Signed David Harp L.S. or R.C.E. Number LS 5290



COUNTY SURVEYOR'S STATEMENT

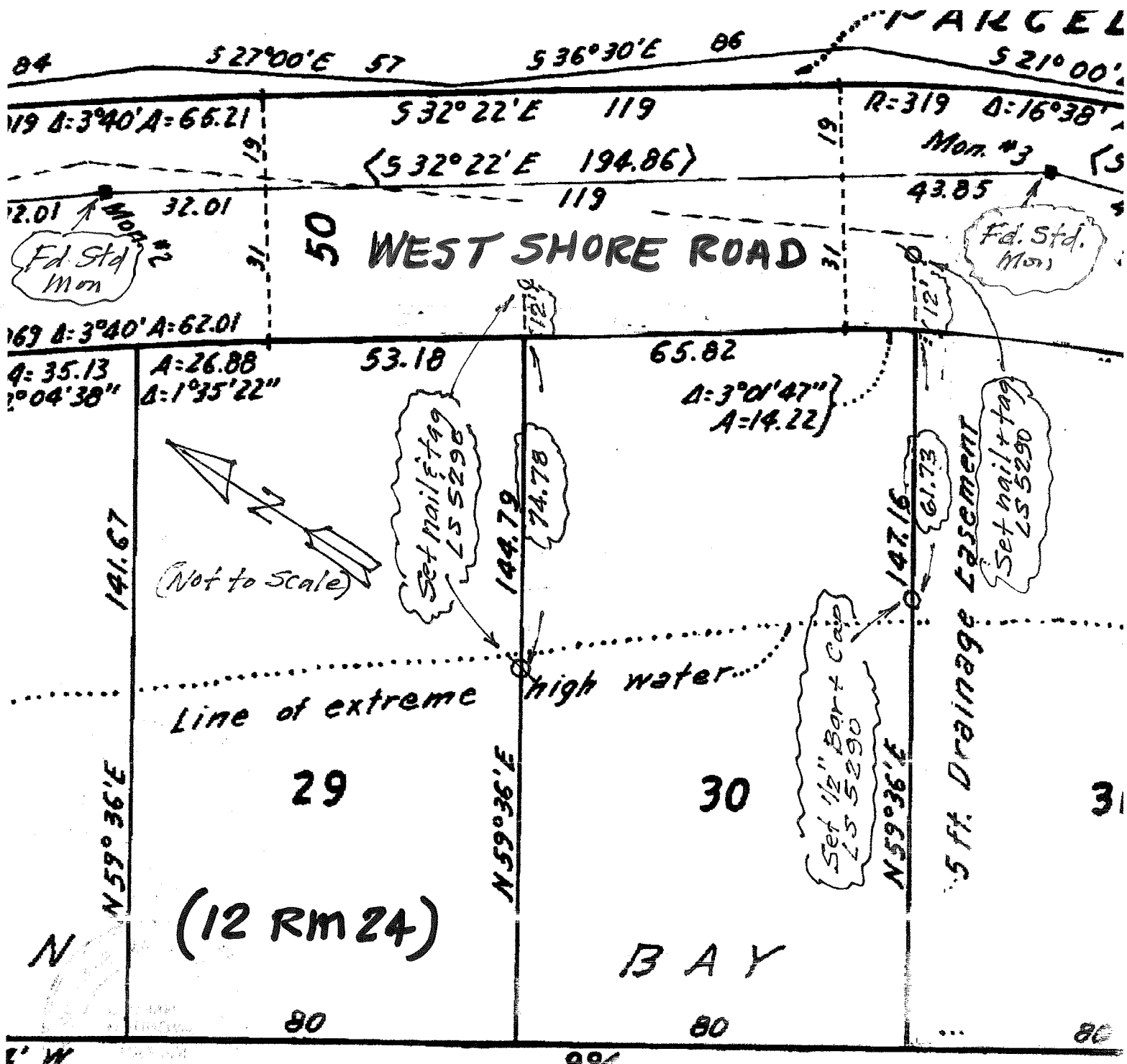
This Corner Record was received MAY 4, 2016 and examined

and filed AUGUST 24, 2016

Signed R. G. Simonitch Title County Surveyor



County Surveyor's Comment \_\_\_\_\_



Belvedere