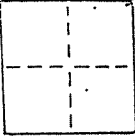


# CORNER RECORD

COUNTY OF \_\_\_\_\_ T. \_\_\_\_\_ R. \_\_\_\_\_ MERIDIAN CALIFORNIA  
 CORNER TYPE: GOVT. CORNER  MEANDER  RANCHO  CONTROL  OTHER   
 CORNER IDENTIFICATION — DATE OF VISIT June 19 89



Monuments per map 4 O.S. 63  
AP 60-241-05, 60-232-04, 60-241-29  
 Near #'s 455, 456 & 475 Belvedere Avenue, City of Belvedere

CORNER — LEFT AS FOUND  FOUND AND TAGGED  REESTABLISHED OBLITERATED CORNER  REBUILT

PHYSICAL DESCRIPTION OF CORNER FOUND; EVIDENCE AND METHOD USED TO IDENTIFY OR REESTABLISH

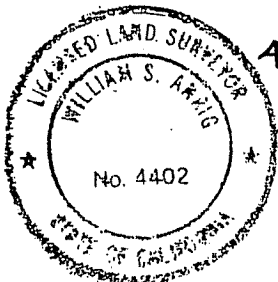
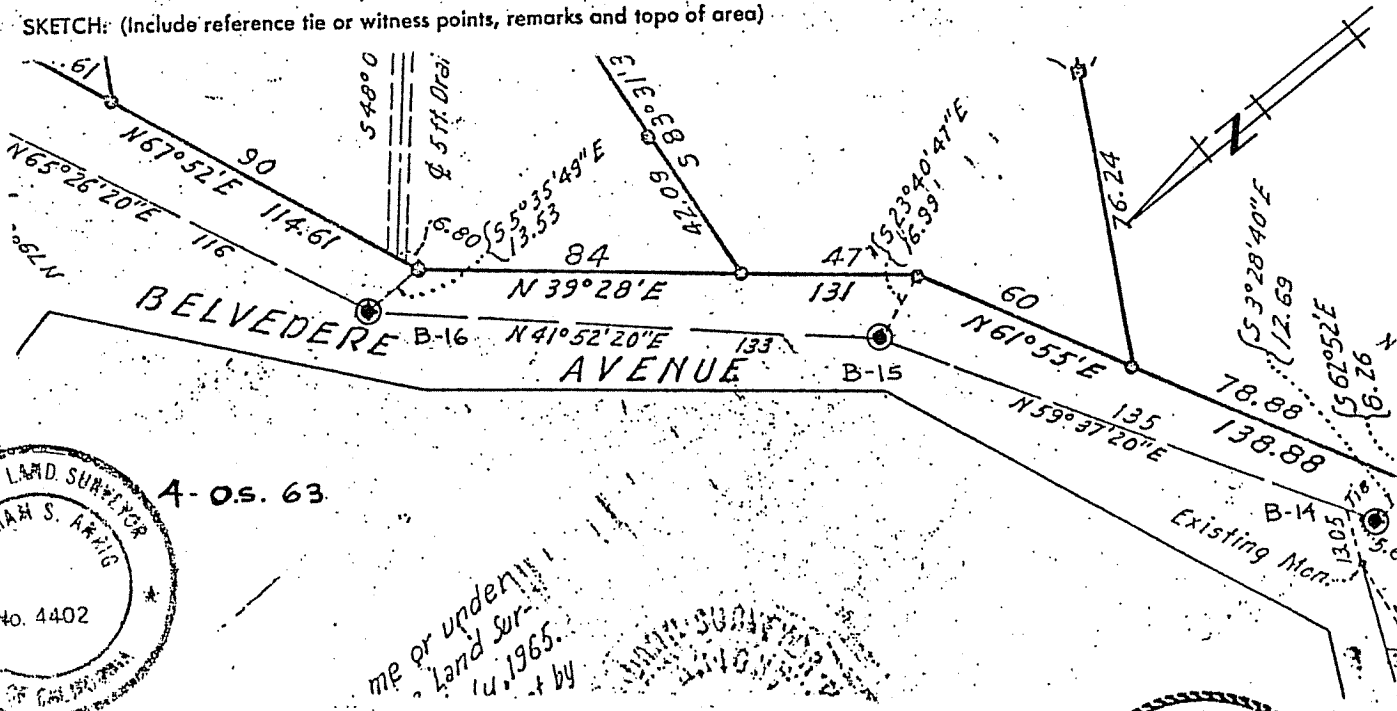
Found standard cast iron street monument, origin unknown, called group of five nails on map 4 O.S. 63  
 Original position perpetuated, distances not verified  
 Raised after repaving

PHYSICAL DESCRIPTION OF MONUMENTS, REBUILT OR PERPETUATED

Standard cast iron street monument

CALIFORNIA COORDINATE SYSTEM ORDER: FIRST  SECOND  THIRD   
 STATIONS USED: NGS (USC & GS)  STATE  COUNTY  OTHER  STATION \_\_\_\_\_ STATION \_\_\_\_\_  
 ZONE \_\_\_\_\_ ELEVATION \_\_\_\_\_ NORTHINGS (Y) \_\_\_\_\_ EASTINGS (X) \_\_\_\_\_

SKETCH: (Include reference tie or witness points, remarks and topo of area)



A-O.S. 63

me or under my  
 Land Sur-  
 14, 1965.  
 by

SURVEYOR'S CERTIFICATE

THIS CORNER RECORD WAS PREPARED BY ME OR UNDER MY DIRECTION IN CONFORMANCE WITH THE LAND SURVEYORS ACT ON NOVEMBER 1 1990

SIGNED: William S. Arwig  
 L.S. or R.C.E. No.: L.S. 4402 EXP 9-30-93

SEAL

COUNTY SURVEYOR'S CERTIFICATE

THE CORNER RECORD WAS RECEIVED BY ME AND EXAMINED AND FILED  
 BY: \_\_\_\_\_ Exp. 3-31-92  
 TITLE: \_\_\_\_\_

DOCUMENT No. \_\_\_\_\_

STATEMENT ON BACK OF SHEET

YES  NO

