

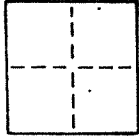
CORNER RECORD

1 OF 1

COUNTY OF MARIN T. \_\_\_\_\_ R. \_\_\_\_\_ MERIDIAN \_\_\_\_\_ CALIFORNIA

CORNER TYPE: GOV'T. CORNER  MEANDER  RANCHO  CONTROL  OTHER

CORNER IDENTIFICATION — DATE OF VISIT \_\_\_\_\_ 19\_\_\_\_



CORNER — LEFT AS FOUND  FOUND AND TAGGED  REESTABLISHED OBLITERATED CORNER  REBUILT

PHYSICAL DESCRIPTION OF CORNER FOUND; EVIDENCE AND METHOD USED TO IDENTIFY OR REESTABLISH

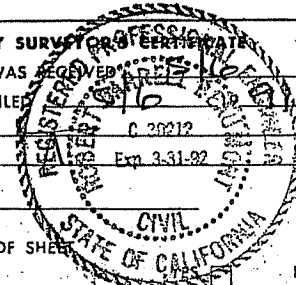
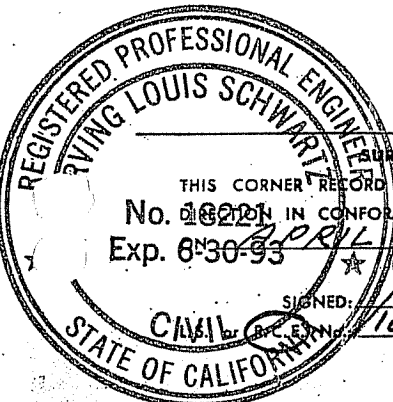
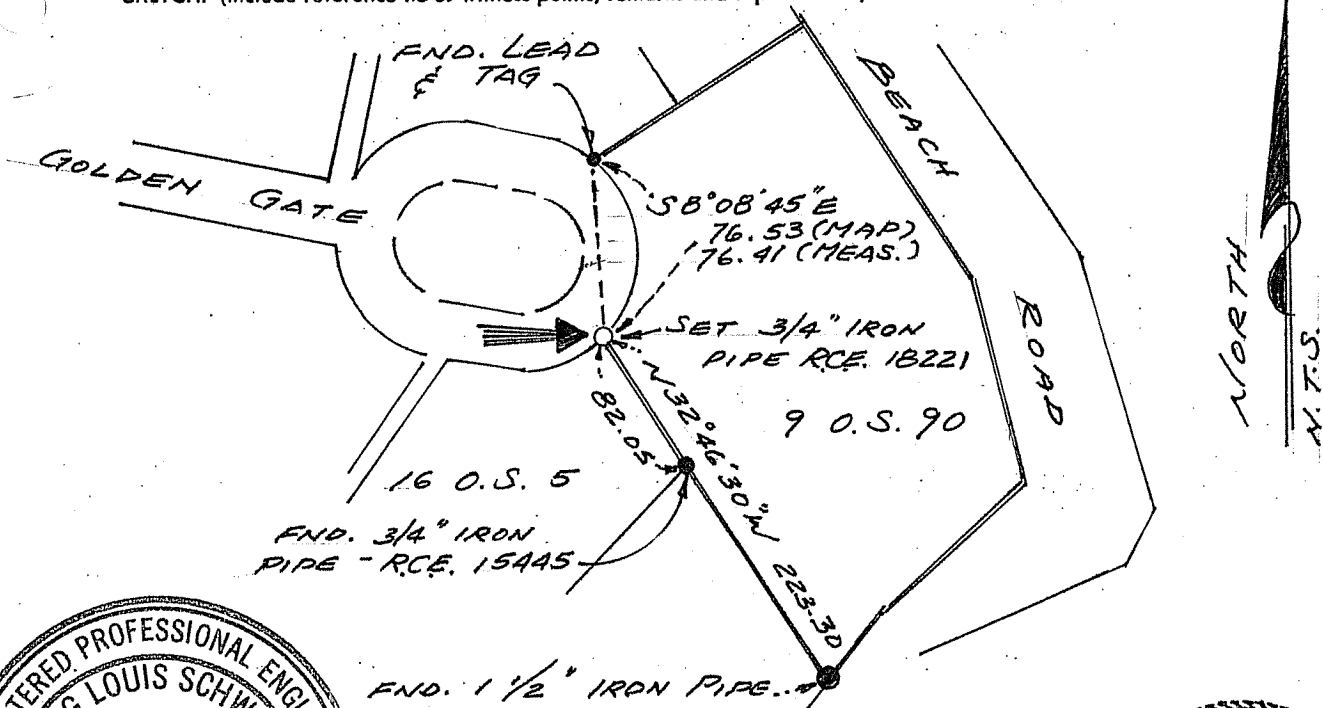
A.P.N. 060-232-03

PHYSICAL DESCRIPTION OF MONUMENTS, REBUILT OR PERPETUATED

SET 3/4" IRON PIPE TAGGED R.C.E. 18221 FOR THE MOST SOUTHERLY RIGHT-OF-WAY PROPERTY CORNER AS SHOWN ON RECORD OF SURVEY, BOOK 9 OFFICIAL SURVEYS, PAGE 90.

CALIFORNIA COORDINATE SYSTEM ORDER: FIRST  SECOND  THIRD   
STATIONS USED: NGS (USC & GS)  STATE  COUNTY  OTHER  STATION \_\_\_\_\_  
ZONE \_\_\_\_\_ ELEVATION \_\_\_\_\_ NORTHINGS (Y) \_\_\_\_\_ EASTINGS (X) \_\_\_\_\_

SKETCH: (Include reference tie or witness points, remarks and topo of area)



SURVEYOR'S CERTIFICATE  
THIS CORNER RECORD WAS PREPARED BY ME OR UNDER MY  
No. 17221 IN CONFORMANCE WITH THE LAND SURVEYORS ACT  
Exp. 6-30-93  
SIGNED: [Signature]  
CIVIL ENGINEER No. 17221

COUNTY SURVEYOR'S CERTIFICATE  
THE CORNER RECORD WAS RECEIVED AND EXAMINED AND FILED  
BY: [Signature]  
TITLE: \_\_\_\_\_  
DOCUMENT No. \_\_\_\_\_  
STATEMENT ON BACK OF SHEET \_\_\_\_\_

SEAL

NO