

CORNER RECORD

Document Number

060-221-42

City of Belvedere

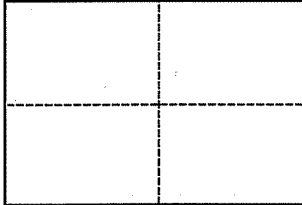
County of Marin

California

Brief Legal Description Being a portion of Lot 2, Block 52, Map No. 4 of Belvedere Peninsula

CORNER TYPE

COORDINATES (Optional)



Government Corner \_\_\_ Control \_\_\_
Meander \_\_\_ Property X
Rancho \_\_\_ Other \_\_\_
Date of Survey July 28, 2011

North \_\_\_
East \_\_\_
Zone Datum \_\_\_
Elev. \_\_\_

Corner \_\_\_ Left as found [ ] Found and tagged [ ] Established [ ] Reestablished [X] Rebuilt [ ]

Identification and type of corner found: Evidence used to identify or procedure used to establish or reestablish the corner:

Found Monuments as shown on 31 R.O.S. 18, used tie point as shown on same to reestablish North Easterly Corner

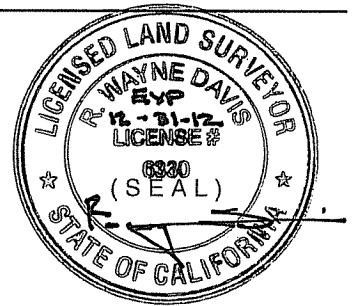
A description of the physical condition of the monument as found and as set or reset:

Set Nail and Tag, L.S. 6330 in asphalt parking area.

SURVEYOR'S STATEMENT

This Corner Record was prepared by me or under my direction in conformance with the Land Surveyors' Act on October 10, 2011

Signed [Signature] L.S. or R.C.E. Number L.S. 6330



COUNTY SURVEYOR'S STATEMENT

This Corner Record was received OCTOBER 19, 2011

and examined and filed NOVEMBER 10, 2011

Signed [Signature] Title COUNTY SURVEYOR

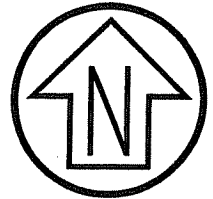


County Surveyor's Comment

Graphic Scale (in feet)

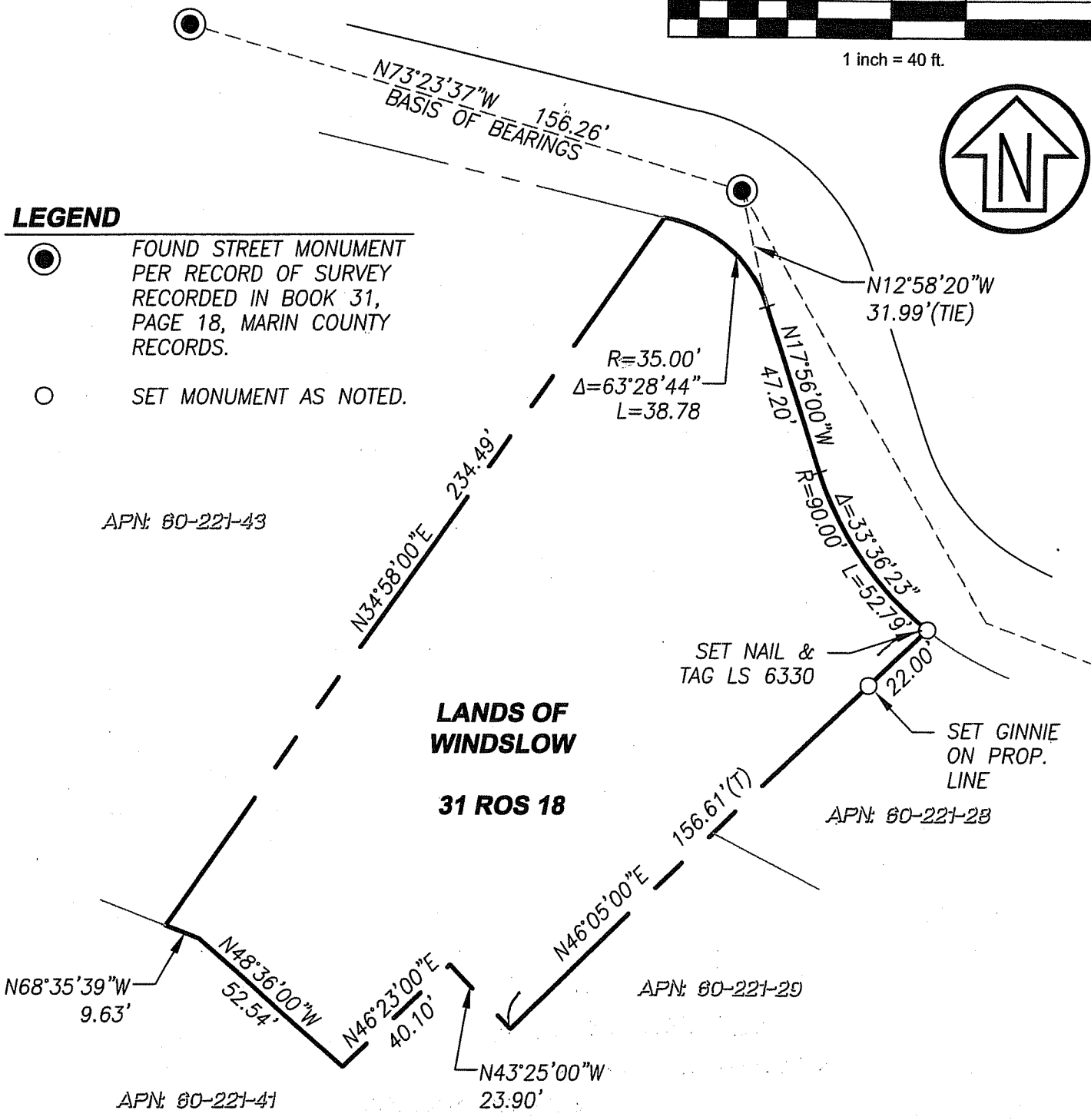


1 inch = 40 ft.



**LEGEND**

- FOUND STREET MONUMENT PER RECORD OF SURVEY RECORDED IN BOOK 31, PAGE 18, MARIN COUNTY RECORDS.
- SET MONUMENT AS NOTED.



**R.W. DAVIS & ASSOCIATES  
LAND SURVEYORS**

45 Leveroni Court Tel. (415) 883-9099  
 Novato CA 94949 Fax (415) 883-2016  
 L.S. 6330 Email:  
 RWDAVIS@RWDAVIS-SURVEY.COM

© 2011

Rev. X

Date: 10/10/11

Job No. 344-001

Scale: 1" = 40'

**LANDS OF WINDSLOW  
CORNER RECORD**

APN: 60-221-42

BELVEDERE MARIN COUNTY CALIFORNIA