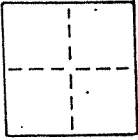


CORNER RECORD

COUNTY OF _____ T. _____ R. _____ MERIDIAN _____ CALIFORNIA _____

CORNER TYPE: GOVT. CORNER MEANDER RANCHO CONTROL OTHER

CORNER IDENTIFICATION — DATE OF VISIT June 19 89



Monument per 5 R.M. 68, sheets 2 & 3
Near #298 & #333 Belvedere Ave., City of Belvedere

AP 60-202-09 & 60-221-39

CORNER — LEFT AS FOUND FOUND AND TAGGED REESTABLISHED OBLITERATED CORNER REBUILT

PHYSICAL DESCRIPTION OF CORNER FOUND; EVIDENCE AND METHOD USED TO IDENTIFY OR REESTABLISH

Found railroad spike (B10), 1/2" rebar (B11), 7/8" bar (B12)
Original position perpetuated, distances not verified
Offset during repaving

PHYSICAL DESCRIPTION OF MONUMENTS, REBUILT OR PERPETUATED

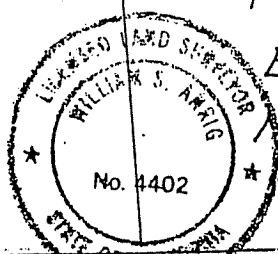
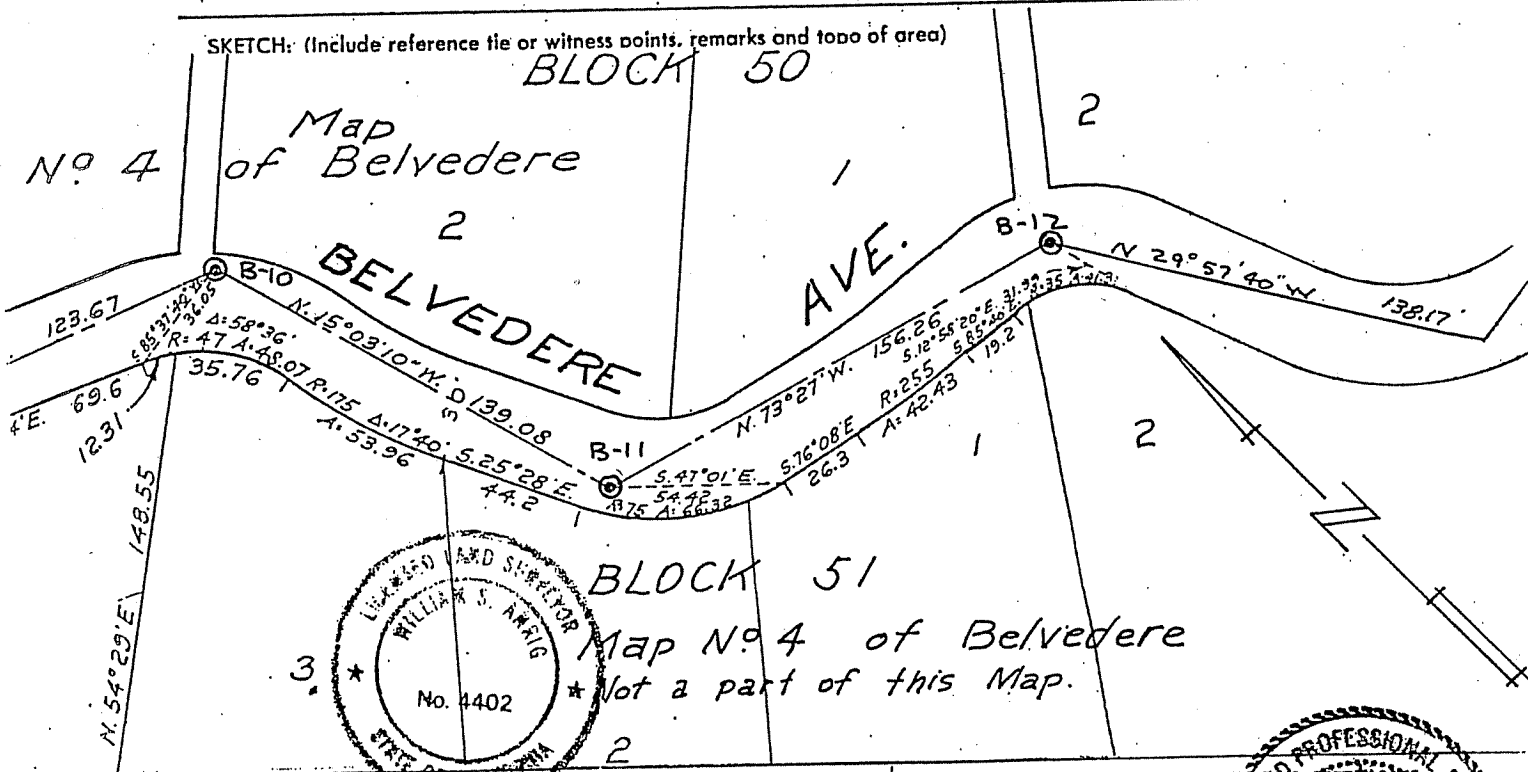
Standard cast iron street monument

CALIFORNIA COORDINATE SYSTEM ORDER: FIRST SECOND THIRD

STATIONS USED: NGS (USC & GS) STATE COUNTY OTHER STATION _____ STATION _____

ZONE _____ ELEVATION _____ NORTHINGS (Y) _____ EASTINGS (X) _____

SKETCH: (Include reference tie or witness points, remarks and topo of area)



THIS CORNER RECORD WAS PREPARED BY ME OR UNDER MY DIRECTION IN CONFORMANCE WITH THE LAND SURVEYORS ACT ON NOVEMBER 1 1990

SIGNED: William S. Anton
L.S. or R.C.E. No.: L.S. 4402 EXP 9-30-93

COUNTY SURVEYOR _____ THE CORNER RECORD WAS REBUILT AND EXAMINED AND FILED BY: _____ TITLE: _____ DOCUMENT No. _____ STATEMENT ON BACK OF SHEET

