



Arrig - Boyle

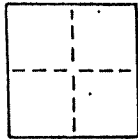
LICENSED LAND SURVEYORS CIVIL ENGINEERS
165 Helens Lane Mill Valley CA 94041 (415) 388-0067

CORNER RECORD

COUNTY OF _____ T. _____ R. _____ MERIDIAN _____ CALIFORNIA

CORNER TYPE: GOV'T. CORNER MEANDER RANCHO CONTROL OTHER

CORNER IDENTIFICATION - DATE OF VISIT August 20 1990



Monuments per 5 R.M. 68
 Near #160 Madrona Ave., City of Belvedere AP 60-171-23
 Near #176 Madrona Ave., City of Belvedere " 60-192-01
 Near #180 Madrona Ave., City of Belvedere " 60-192-02

CORNER - LEFT AS FOUND FOUND AND TAGGED REESTABLISHED OBLITERATED CORNER REBUILT

PHYSICAL DESCRIPTION OF CORNER FOUND; EVIDENCE AND METHOD USED TO IDENTIFY OR REESTABLISH

Found railroad spike
 Found 3/4" pipe
 Found railroad spike
 Original positions perpetuated, distances not verified
 Offset during repaving

PHYSICAL DESCRIPTION OF MONUMENTS, REBUILT OR PERPETUATED

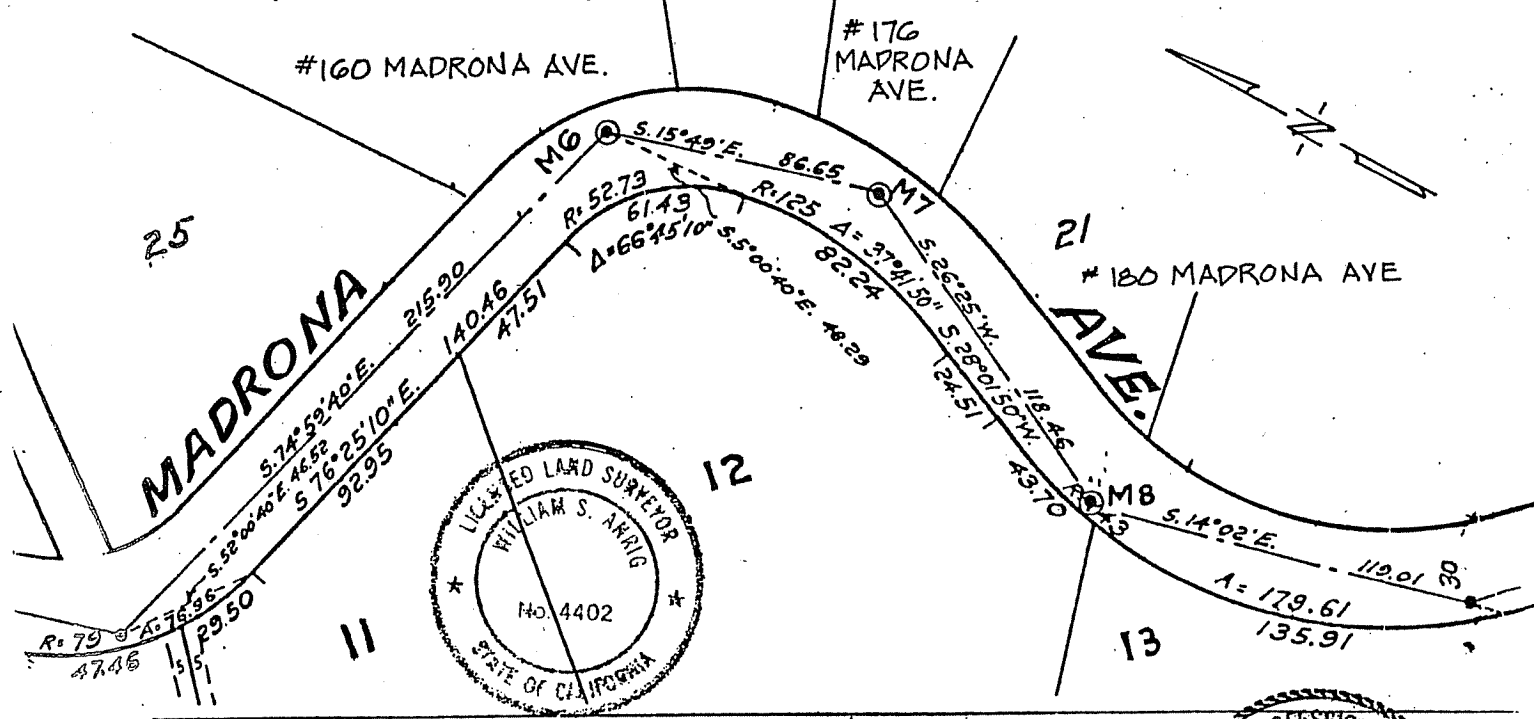
Standard cast iron street monuments

CALIFORNIA COORDINATE SYSTEM ORDER: FIRST SECOND THIRD

STATIONS USED: NGS (USC & GS) STATE COUNTY OTHER STATION _____ STATION _____

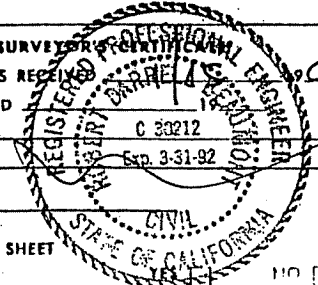
ZONE _____ ELEVATION _____ NORTHINGS (Y) _____ EASTINGS (X) _____

SKETCH: (Include reference tie or witness points, remarks and topo of area)



SURVEYOR'S CERTIFICATE
 THIS CORNER RECORD WAS PREPARED BY ME OR UNDER MY DIRECTION IN CONFORMANCE WITH THE LAND SURVEYORS ACT ON NOVEMBER 1 1990
 SIGNED: William S. Arrig
 L.S. or R.C.E. No. L.S. 4402 EXP 9-30-93

COUNTY SURVEYOR'S OFFICE
 THE CORNER RECORD WAS RECEIVED AND EXAMINED AND FILED BY: William S. Arrig C 53212 Exp. 3-31-92
 TITLE: _____
 DOCUMENT No. _____
 STATEMENT ON BACK OF SHEET



SEAL