

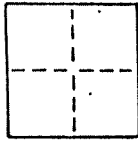


Aring - Boyle

LICENSED LAND SURVEYORS CIVIL ENGINEERS
165 Helens Lane Mill Valley CA 94041 (415) 388-0067

CORNER RECORD

COUNTY OF _____ T. _____ R. _____ MERIDIAN _____ CALIFORNIA
CORNER TYPE: GOV'T. CORNER MEANDER RANCHO CONTROL OTHER
CORNER IDENTIFICATION - DATE OF VISIT August 20, 1990



Monuments per 5 R.M. 68
Near #160 Madrona Ave., City of Belvedere AP 60-171-23
Near #176 Madrona Ave., City of Belvedere " 60-192-01
Near #180 Madrona Ave., City of Belvedere " 60-192-02

CORNER - LEFT AS FOUND FOUND AND TAGGED REESTABLISHED OBLITERATED CORNER REBUILT

PHYSICAL DESCRIPTION OF CORNER FOUND; EVIDENCE AND METHOD USED TO IDENTIFY OR REESTABLISH

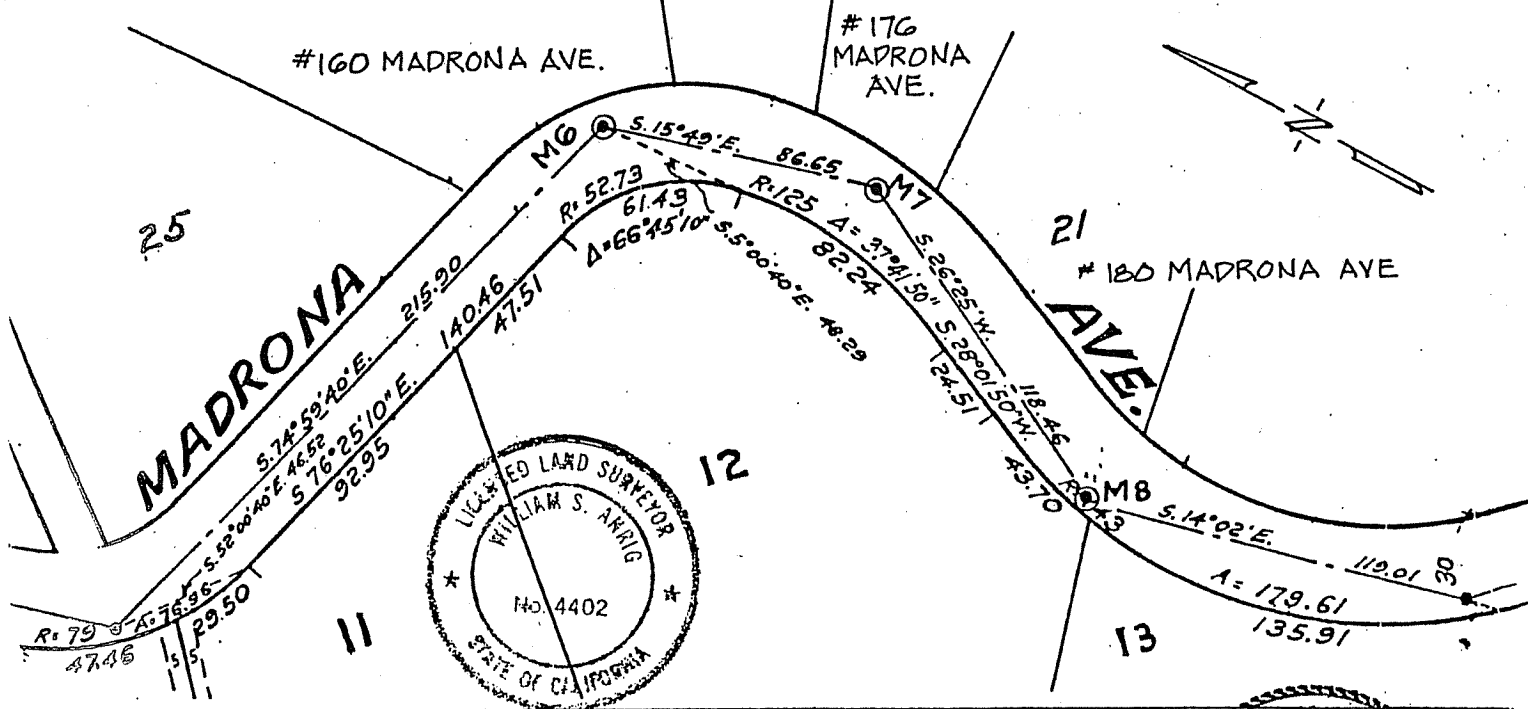
Found railroad spike
Found 3/4" pipe
Found railroad spike
Original positions perpetuated, distances not verified
Offset during repaving

PHYSICAL DESCRIPTION OF MONUMENTS, REBUILT OR PERPETUATED

Standard cast iron street monuments

CALIFORNIA COORDINATE SYSTEM ORDER: FIRST SECOND THIRD
STATIONS USED: NGS (USC & GS) STATE COUNTY OTHER STATION _____ STATION _____
ZONE _____ ELEVATION _____ NORTHINGS (Y) _____ EASTINGS (X) _____

SKETCH: (Include reference tie or witness points, remarks and topo of area)



SURVEYOR'S CERTIFICATE
THIS CORNER RECORD WAS PREPARED BY ME OR UNDER MY DIRECTION IN CONFORMANCE WITH THE LAND SURVEYORS ACT ON NOVEMBER 1, 1990

SIGNED: *William S. Aring*
L.S. or R.C.E. No.: L.S. 4402 EXP 9-30-93

COUNTY SURVEYOR'S CERTIFICATE
THE CORNER RECORD WAS RECEIVED AND EXAMINED AND FILED BY: _____ TITLE: _____ DOCUMENT No. _____ STATEMENT ON BACK OF SHEET

