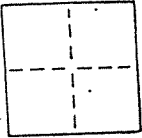


CORNER RECORD

COUNTY OF _____ T. _____ R. _____ MERIDIAN CALIFORNIA

CORNER TYPE: GOV'T. CORNER MEANDER RANCHO CONTROL OTHER

CORNER IDENTIFICATION — DATE OF VISIT June 19 89



Monument per 5 R.M. 68, sheets 3 & 4
Near #107 & #125 Belvedere Ave., City of Belvedere

AP 60-181-31 + 60-181-06

CORNER — LEFT AS FOUND FOUND AND TAGGED REESTABLISHED OBLITERATED CORNER REBUILT

PHYSICAL DESCRIPTION OF CORNER FOUND; EVIDENCE AND METHOD USED TO IDENTIFY OR REESTABLISH

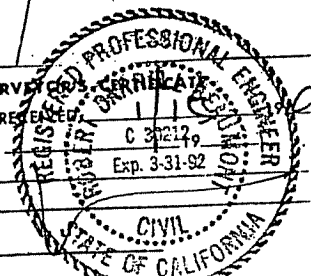
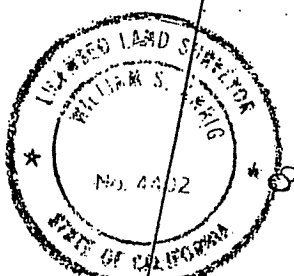
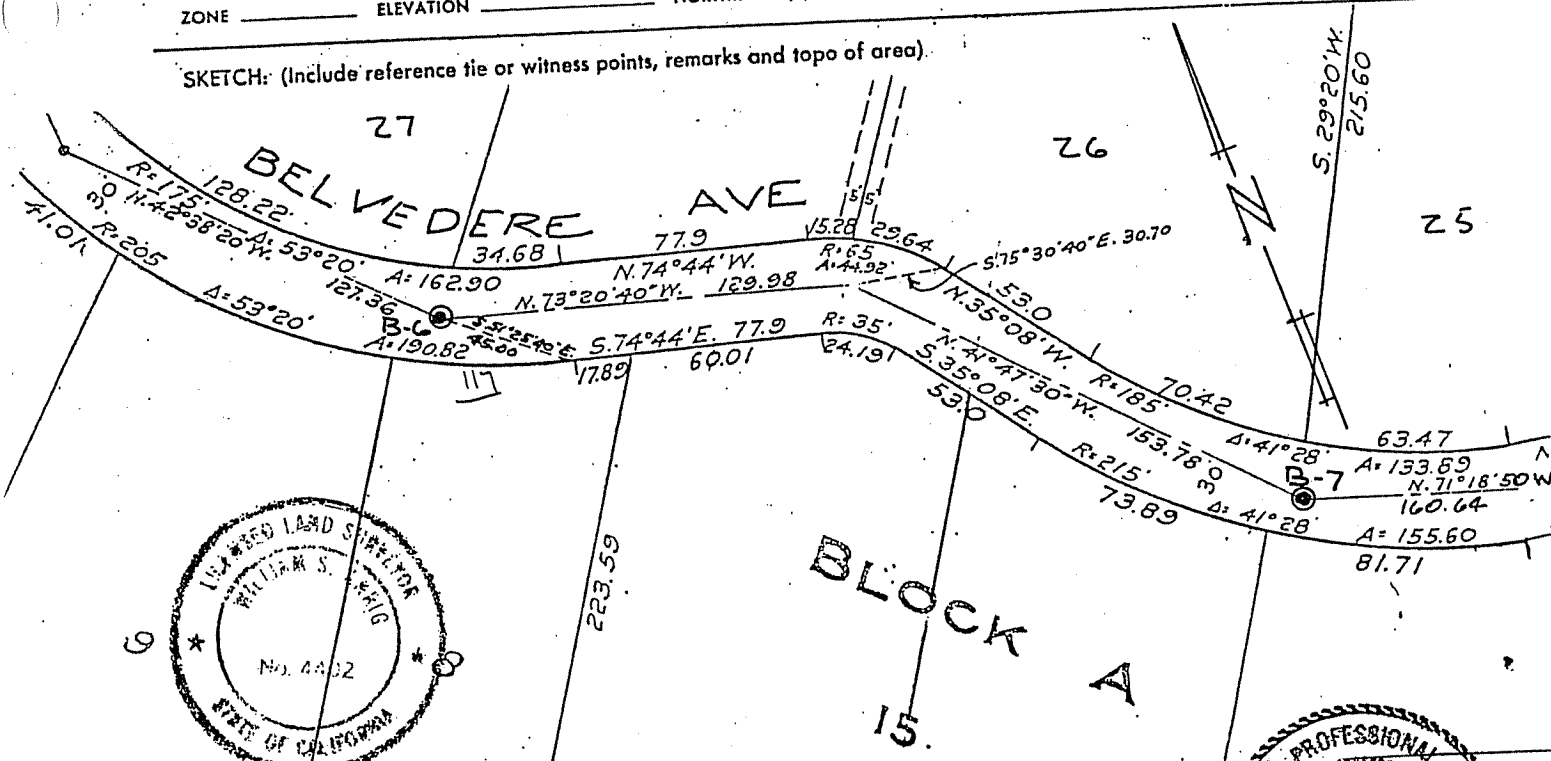
Found railroad spike
Original position perpetuated, distances not verified
Offset during repaving

PHYSICAL DESCRIPTION OF MONUMENTS, REBUILT OR PERPETUATED

Standard cast iron street monument

CALIFORNIA COORDINATE SYSTEM ORDER: FIRST SECOND THIRD STATION _____
STATIONS USED: NGS (USC & GS) STATE COUNTY OTHER EASTINGS (X) _____
ZONE _____ ELEVATION _____ NORTHINGS (Y) _____

SKETCH: (Include reference tie or witness points, remarks and topo of area).



SURVEYOR'S CERTIFICATE
THIS CORNER RECORD WAS PREPARED BY ME OR UNDER MY DIRECTION IN CONFORMANCE WITH THE LAND SURVEYORS ACT ON NOVEMBER 1 19 90

SIGNED: William S. King
L.S. or R.C.E. No.: L.S. 4402 EXP 9-30-93

COUNTY SURVEYOR'S CERTIFICATE
THE CORNER RECORD WAS REVIEWED AND EXAMINED AND FILED BY: _____ TITLE: _____
DOCUMENT No. _____
STATEMENT ON BACK OF SHEET YES NO