

**CORNER RECORD**

Document Number APN 060-174-08

County of Marin, California

City of Belvedere

Brief Description: Monument M25 "Record of Survey Establishing Random Horizontal Control Monumentation in the City of Belvedere" recorded in Book 2003 of Maps at Page 83, Marin County Records.

**CORNER TYPE**

**COORDINATES**

(Optional)

Government Corner   
Meander   
Rancho   
Date of Survey June 2006

Control   
Property   
Other

N. \_\_\_\_\_  
E. \_\_\_\_\_  
Zone \_\_\_\_\_ Datum \_\_\_\_\_  
Elev. \_\_\_\_\_

Corner --Left as found  Found and tagged  Established  Reestablished  Rebuilt

Identification and type of corner found: Evidence used to identify or procedure used to establish or reestablish the corner.

This survey is based upon found monuments shown on that certain Record of Survey entitled "Record of Survey Establishing Random Horizontal Control Monumentation in the City of Belvedere" recorded in Book 2003 of Maps at Page 83, Marin County Records.

A Description of the physical condition of the monument as found and as set or reset.

See Sheet two.

**SURVEYOR'S STATEMENT**

This Corner Record was prepared by me or under my direction in conformance with the Professional Land Act on 12-13 2006.

Signed Linda Carruthers P.L.S. 7053



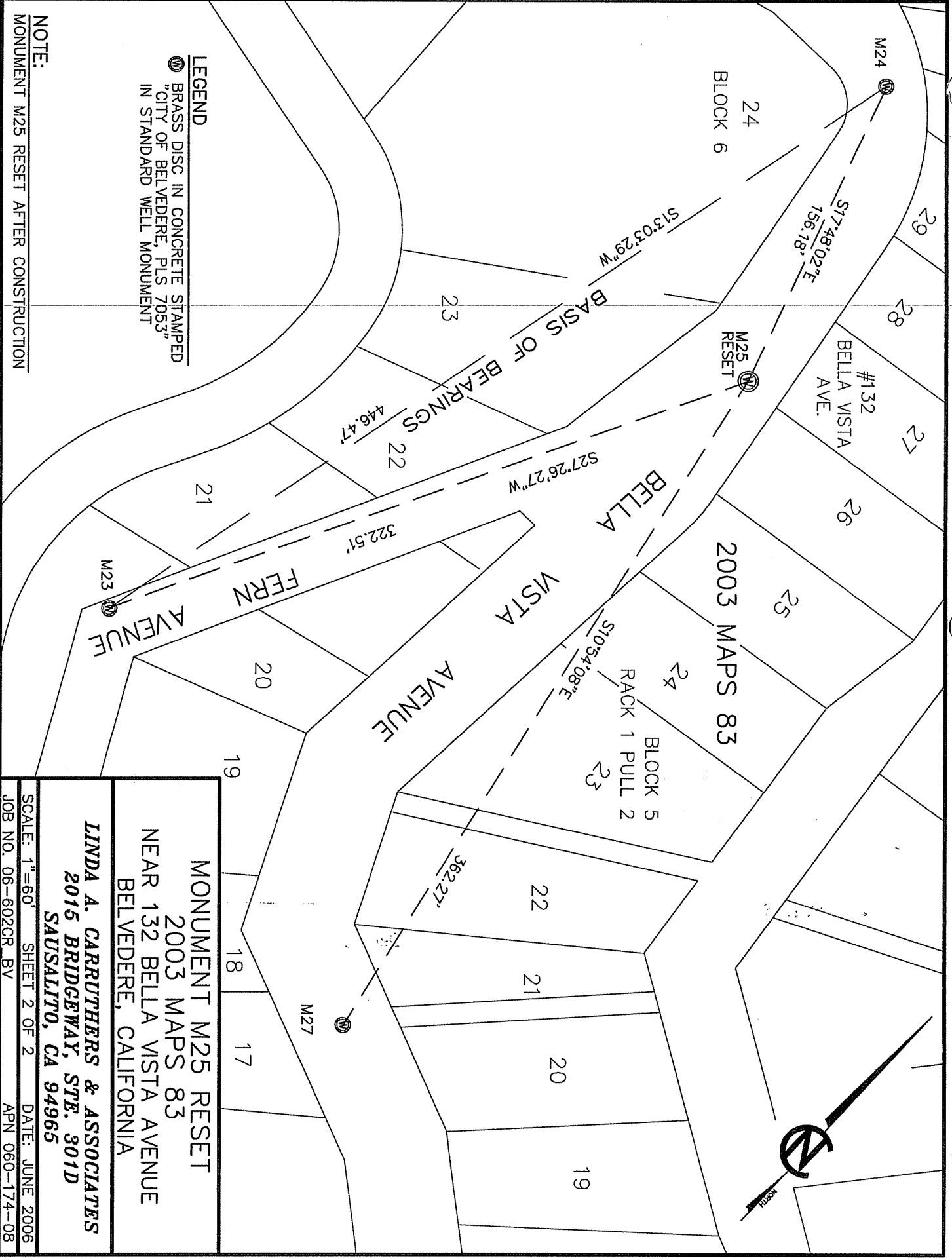
**COUNTY SURVEYOR'S STATEMENT**

This Corner Record was received DECEMBER 14, 2006 and examined and filed DECEMBER 18, 2006.

Signed [Signature] Title COUNTY SURVEYOR

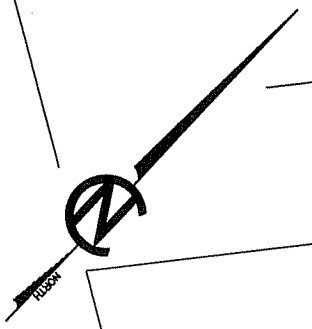


County Surveyor's Comments \_\_\_\_\_



**LEGEND**  
 (M) BRASS DISC IN CONCRETE STAMPED  
 "CITY OF BELVEDERE, PLS 7053"  
 IN STANDARD WELL MONUMENT

**NOTE:**  
 MONUMENT M25 RESET AFTER CONSTRUCTION



**MONUMENT M25 RESET**  
**2003 MAPS 83**  
 NEAR 132 BELLA VISTA AVENUE  
 BELVEDERE, CALIFORNIA

**LINDA A. CARRUTHERS & ASSOCIATES**  
 2015 BRIDGEWAY, STE. 301D  
 SAUSALITO, CA 94965

SCALE: 1"=60' SHEET 2 OF 2 DATE: JUNE 2006  
 JOB NO. 06-602CR\_BV APN 060-174-08