

CORNER RECORD

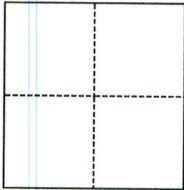
Agency Index CR22-089
Document Number 060-173=05

City of BELVEDERE County of MARIN, California

Brief Legal Description RECORD OF SURVEY, LANDS OF RIMMER, 2003 MAPS PAGE 85

CORNER TYPE

COORDINATES (Optional)



- Government Corner
- Meander
- Rancho
- Control
- Property
- Other

Date of Survey February 1, 2012

N. _____ E. _____
 Elevation _____
 Units Metric U.S. Survey Foot
 Horizontal Datum _____
 Zone _____ Epoch Date _____
 Vertical Datum _____
 Complies with Public Resources Code §§8801-8819
 Complies with Public Resources Code §§8890-8902

- PLS Act Ref.: 8765(d) 8771 8773 Other:
- Corner/Monument: Left as found Established Rebuilt Pre-Construction
 Found and tagged Reestablished Referenced Post-Construction

Narrative of corner identified and monument as found, set, reset, replaced, or removed:
 See sheet #2 for description(s):

SURVEYOR'S STATEMENT

This Corner Record was prepared by me or under my direction in conformance with
 the Professional Land Surveyors' Act on August 3, 2022
 Signed Linda A. Carruthers P.L.S. or R.C.E. No. 7053



COUNTY SURVEYOR'S STATEMENT

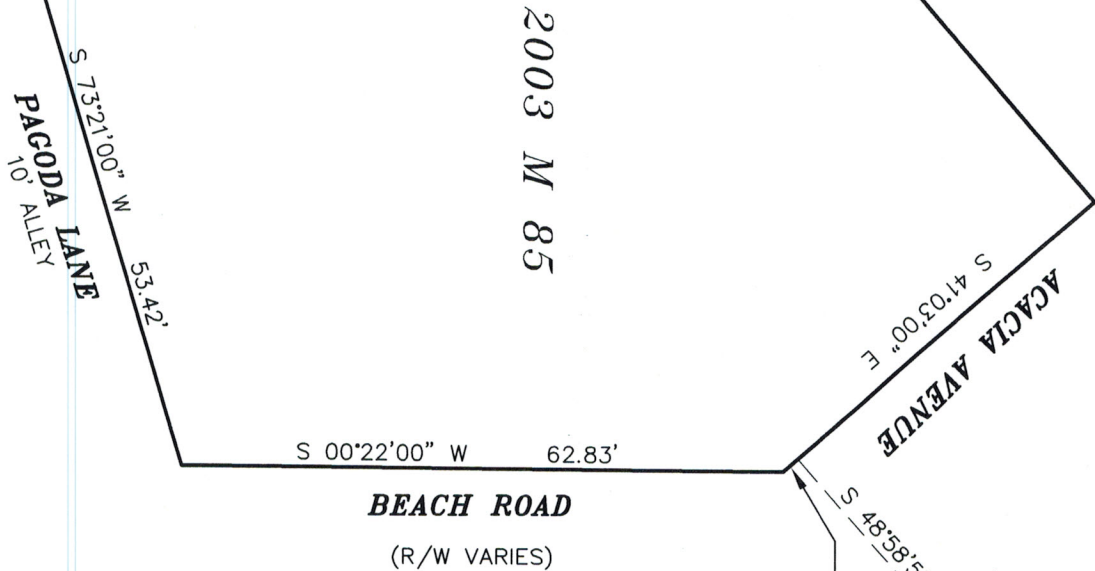
This Corner Record was received 08/03/2022
 and examined and filed 08/03/2022
 Signed T.W. Park P.L.S. or R.C.E. No. 8176
 Title COUNTY SURVEYOR



County Surveyor's Comment

LEGEND

THE PURPOSE OF THIS SURVEY WAS TO RESET THE SELLY CORNER OF RECORD OF SURVEY 2003 MAPS PAGE 85. THIS CORNER WAS DESTROYED BY CONSTRUCTION OF NEW ELECTRICAL BOXES BY PGE. MONUMENTS AT THIS CORNER AS SHOWN ON SAID MAP WERE NOT TIED TO PRIOR TO THIS CONSTRUCTION.



LEGEND

- Ⓜ FD PIN IN CONCRETE IN STANDARD WELL CASTING
- Ⓜ SET NAIL AND BRASS TAG STAMPED PLS 7053 IN CONCRETE UTILITY BOX 2/1/12



Linda A. Carruthers
8-3-22

LICENSED LAND SURVEYOR
Linda Anne Carruthers
No. 7053
EXP. 12/31/22
STATE OF CALIFORNIA

CORNER RECORD
APN 060-173-05
BELVEDERE, CALIFORNIA

LINDA A. CARRUTHERS & ASSOCIATES
P.O. BOX 2053
SAUSALITO, CA 94966

SCALE: 1"=20'
DATE 7/14/22
SHEET 2 OF 2