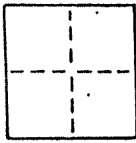




Aring - Boyle
 LICENSED LAND SURVEYORS CIVIL ENGINEERS
 165 Holens Lane Mill Valley CA 94941 (415) 388-006

CORNER RECORD

COUNTY OF _____ T. _____ R. _____ MERIDIAN _____ CALIFORNIA
 CORNER TYPE: GOV'T. CORNER MEANDER RANCHO CONTROL OTHER
 CORNER IDENTIFICATION - DATE OF VISIT August 20 1990



Monuments per 5 R.M. 68
 Near #160 Madrona Ave., City of Belvedere AP 60-171-23
 Near #176 Madrona Ave., City of Belvedere " 60-192-01
 Near #180 Madrona Ave., City of Belvedere " 60-192-02

CORNER - LEFT AS FOUND FOUND AND TAGGED REESTABLISHED OBLITERATED CORNER REBUILT

PHYSICAL DESCRIPTION OF CORNER FOUND; EVIDENCE AND METHOD USED TO IDENTIFY OR REESTABLISH

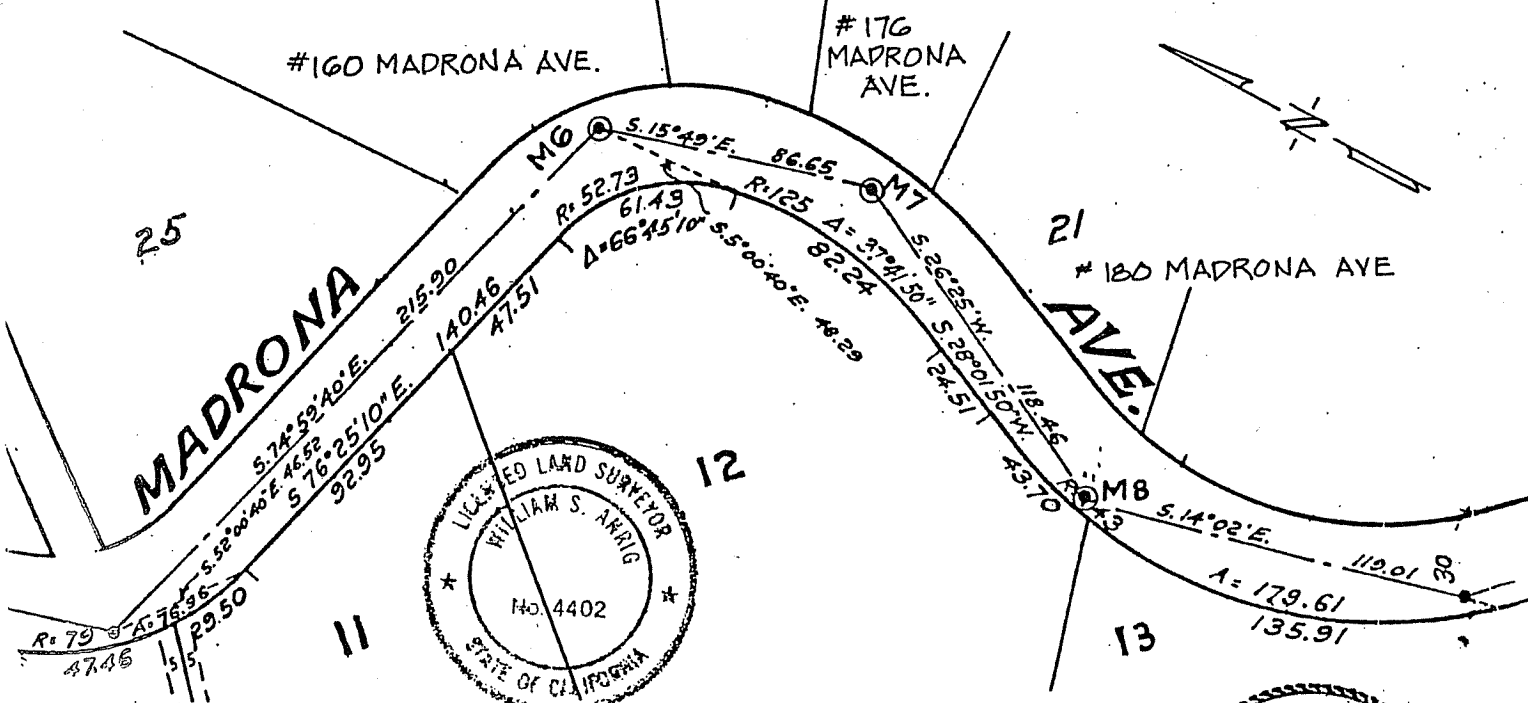
Found railroad spike
 Found 3/4" pipe
 Found railroad spike
 Original positions perpetuated, distances not verified
 Offset during repaving

PHYSICAL DESCRIPTION OF MONUMENTS, REBUILT OR PERPETUATED

Standard cast iron street monuments

CALIFORNIA COORDINATE SYSTEM ORDER: FIRST SECOND THIRD
 STATIONS USED: NGS (USC & GS) STATE COUNTY OTHER STATION _____
 ZONE _____ ELEVATION _____ NORTHINGS (Y) _____ EASTINGS (X) _____

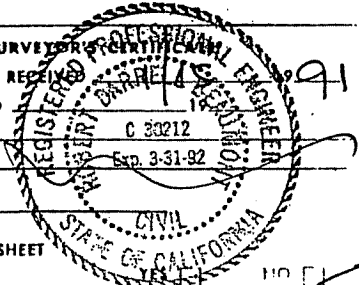
SKETCH: (Include reference tie or witness points, remarks and topo of area)



SURVEYOR'S CERTIFICATE
 THIS CORNER RECORD WAS PREPARED BY ME OR UNDER MY DIRECTION IN CONFORMANCE WITH THE LAND SURVEYORS ACT ON NOVEMBER 1 1990

SIGNED: William S. Aring
 L.S. or R.C.E. No. L.S. 4402 RXP 9-30-93

COUNTY SURVEYOR'S OFFICE
 THE CORNER RECORD WAS REVIEWED AND EXAMINED AND FILED BY: C 20212
 TITLE: Exp. 3-31-92
 DOCUMENT No. _____
 STATEMENT ON BACK OF SHEET



SEAL