



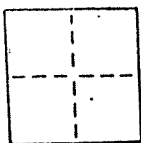
APPROVED
 LICENSED LAND SURVEYORS - CIVIL ENGINEERS
 165 Helens Lane Mill Valley CA 94941 (415) 388-0067

CORNER RECORD

COUNTY OF _____ T. _____ R. _____ MERIDIAN CALIFORNIA

CORNER TYPE: GOVT. CORNER MEANDER RANCHO CONTROL OTHER

CORNER IDENTIFICATION - DATE OF VISIT August 20 19 90



Monuments per 5 R.M. 68

Near #40 Madrona Ave, City of Belvedere

Near # 118 Madrona Ave., City of Belvedere

AP 60-153-08
 60-171-13

CORNER - LEFT AS FOUND FOUND AND TAGGED REESTABLISHED OBLITERATED CORNER REBUILT

PHYSICAL DESCRIPTION OF CORNER FOUND, EVIDENCE AND METHOD USED TO IDENTIFY OR REESTABLISH

Found 3/4" pipe
 Found railroad spike

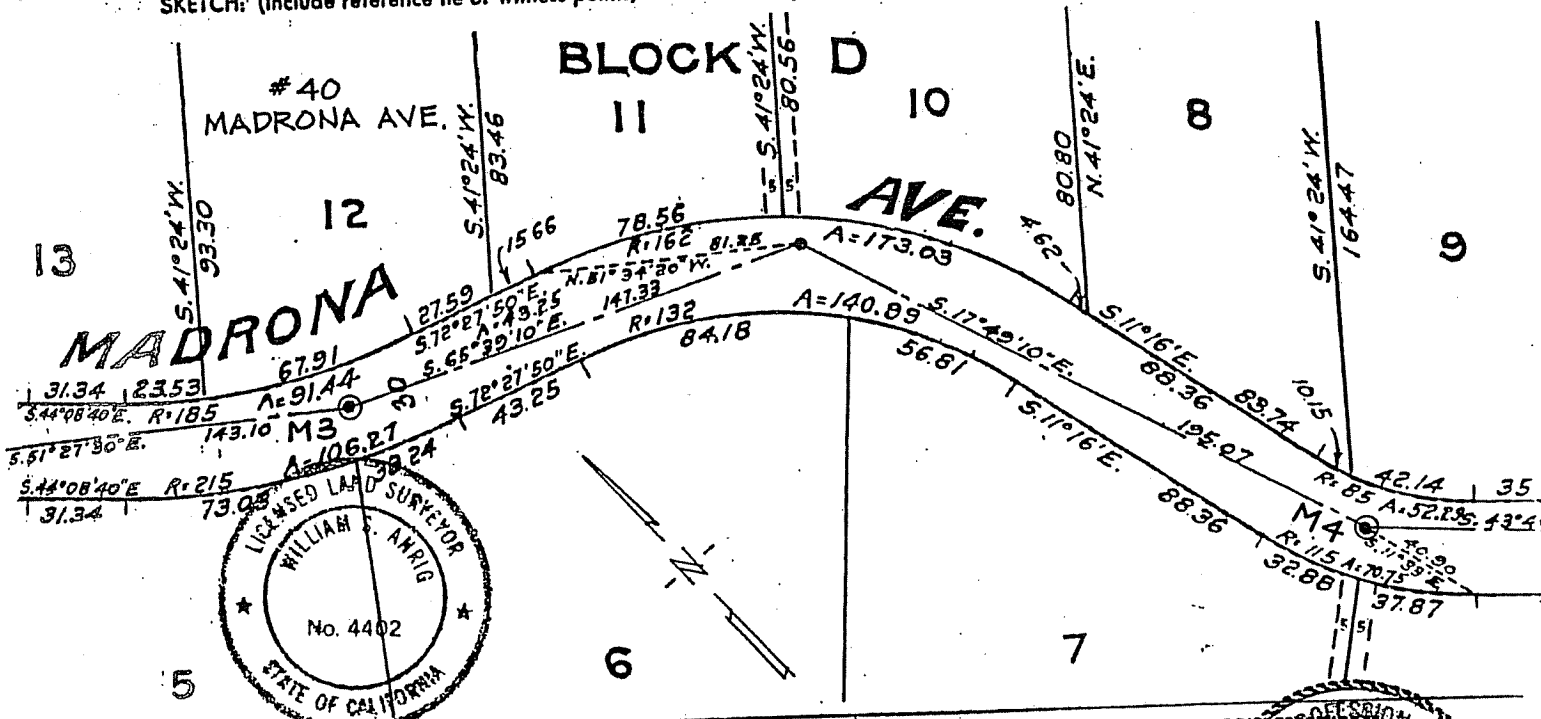
Original positions perpetuated, distances not verified
 Offset during repaving

PHYSICAL DESCRIPTION OF MONUMENTS, REBUILT OR PERPETUATED

Standard cast iron street monuments

CALIFORNIA COORDINATE SYSTEM ORDER: FIRST SECOND THIRD
 STATIONS USED: NGS (USC & GS) STATE COUNTY OTHER STATION _____ STATION _____
 ZONE _____ ELEVATION _____ NORTHINGS (Y) _____ EASTINGS (X) _____

SKETCH: (Include reference tie or witness points, remarks and topo of area)



SURVEYOR'S CERTIFICATE
 THIS CORNER RECORD WAS PREPARED BY ME OR UNDER MY DIRECTION IN CONFORMANCE WITH THE LAND SURVEYORS ACT. ON NOVEMBER 19 90.

SIGNED: William A. Anrig
 L.S. or R.C.E. No. L.S. 4402 EXP 9-30-93

COUNTY SURVEYOR'S CERTIFICATE
 THE CORNER RECORD WAS RECEIVED AND EXAMINED AND FILED BY: _____ TITLE: _____ DOCUMENT No. _____ STATEMENT ON BACK OF SHEET

