



Anrig - Doyle

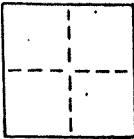
LICENSED LAND SURVEYORS CIVIL ENGINEERS
165 Helena Lane Mill Valley CA 94041 (415) 388-0067

CORNER RECORD

COUNTY OF _____ T. _____ R. _____ MERIDIAN _____ CALIFORNIA

CORNER TYPE: GOVT. CORNER MEANDER RANCHO CONTROL OTHER

CORNER IDENTIFICATION - DATE OF VISIT August 20 1990



Monuments per 5 R.M. 68

Near #20 Bella Vista Ave., City of Belvedere

Near #39 Bella Vista Ave., City of Belvedere

AP 60-154-19
(2) AP 60-171-02

CORNER - LEFT AS FOUND FOUND AND TAGGED REESTABLISHED OBLITERATED CORNER REBUILT

PHYSICAL DESCRIPTION OF CORNER FOUND, EVIDENCE AND METHOD USED TO IDENTIFY OR REESTABLISH

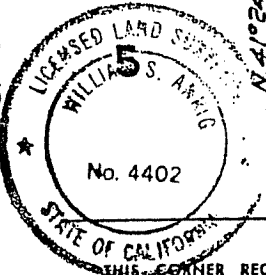
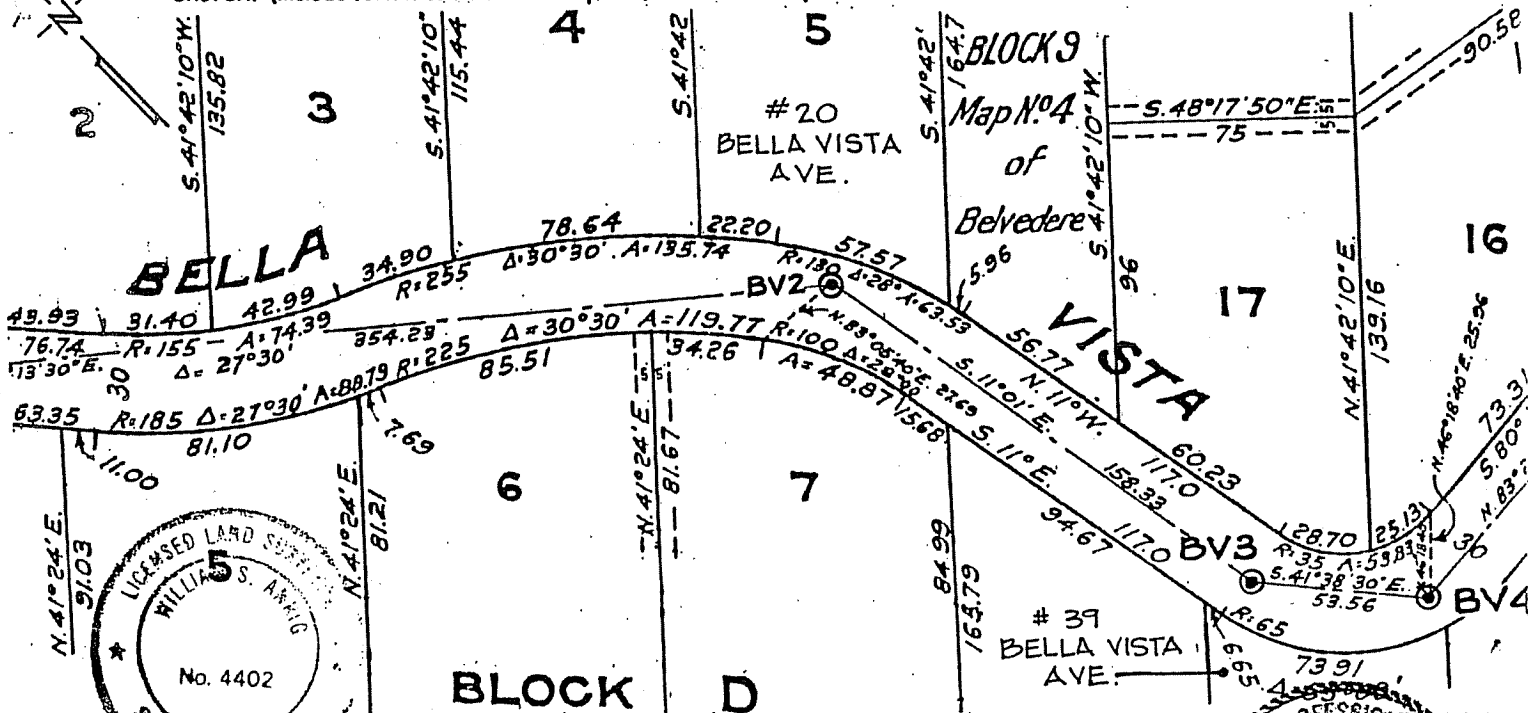
Found R.R. Spike (BV2) Found R.R. Spike (BV3) Found Conc. Nail (BV4)
Original positions perpetuated, distances not verified
Offset during repaving

PHYSICAL DESCRIPTION OF MONUMENTS, REBUILT OR PERPETUATED

Standard cast iron street monument

CALIFORNIA COORDINATE SYSTEM ORDER: FIRST SECOND THIRD
STATIONS USED: NGS (USC & GS) STATE COUNTY OTHER STATION _____ STATION _____
ZONE _____ ELEVATION _____ NORTHINGS (Y) _____ EASTINGS (X) _____

SKETCH: (Include reference tie or witness points, remarks and topo of area)



SURVEYOR'S CERTIFICATE

THIS CORNER RECORD WAS PREPARED BY ME OR UNDER MY DIRECTION IN CONFORMANCE WITH THE LAND SURVEYORS ACT ON NOVEMBER 1990

SIGNED: William S. Anrig

L.S. or R.C.E. No. 4402 Exp 9-30-93

COUNTY SURVEYOR

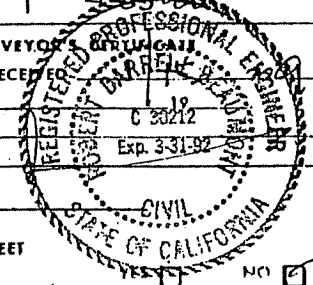
THE CORNER RECORD WAS RECEIVED AND EXAMINED AND FILED

BY: _____

TITLE: _____

DOCUMENT No. _____

STATEMENT ON BACK OF SHEET



SEAL

NO