

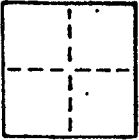
A. P. #60-163-17

CORNER RECORD

COUNTY OF Marin T. _____ R. _____ MERIDIAN _____ CALIFORNIA

CORNER TYPE: GOVT. CORNER MEANDER RANCHO CONTROL OTHER

CORNER IDENTIFICATION — DATE OF VISIT _____ 19____



CORNER — LEFT AS FOUND FOUND AND TAGGED REESTABLISHED OBLITERATED CORNER REBUILT

PHYSICAL DESCRIPTION OF CORNER FOUND; EVIDENCE AND METHOD USED TO IDENTIFY OR REESTABLISH

Set a concrete nail and brass tag embossed "LS 3775" in A.C. Pavement at the most westerly corner of Lot 10, Block C, "Map of Resubdivision of part of The City of Belvedere Marin County California" Recorded in Book 5 of Maps at Page 68, Marin County Records, by and per said map.

PHYSICAL DESCRIPTION OF MONUMENTS REBUILT OR PERPETUATED

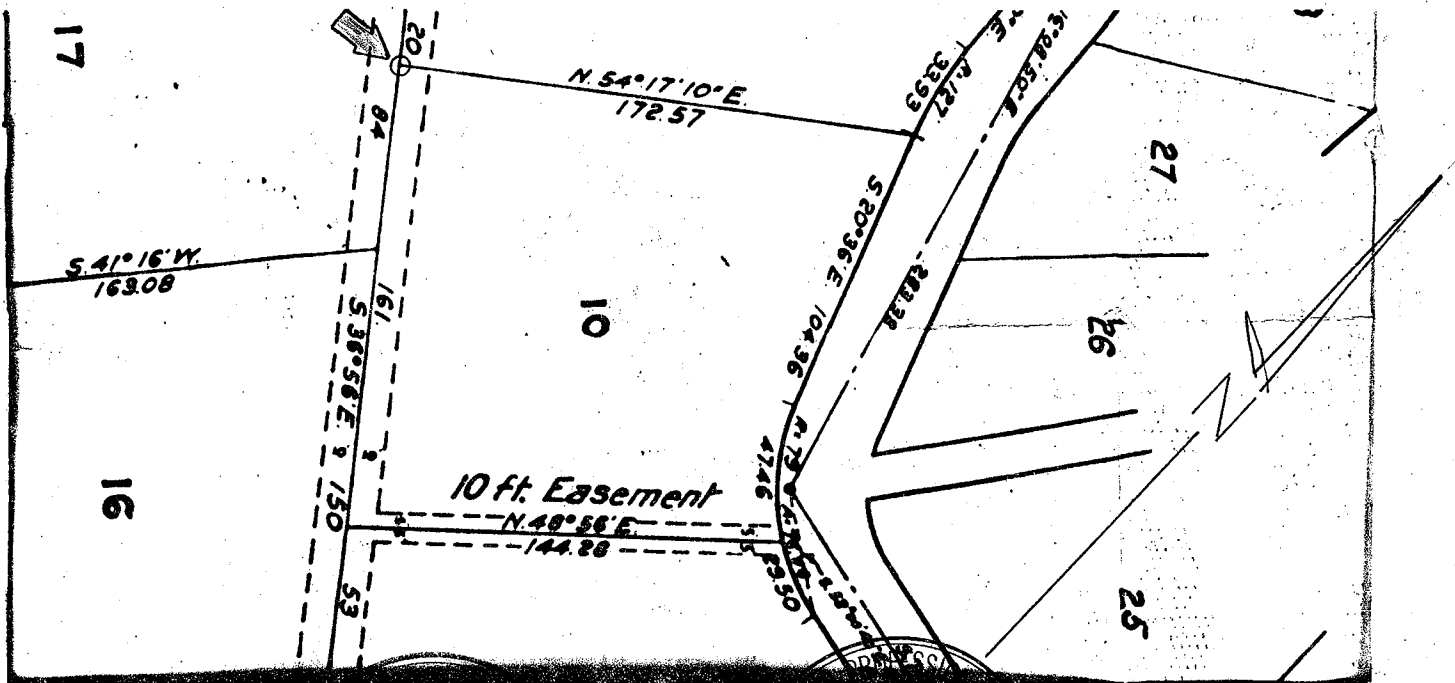
AS SHOWN
 HARRIS J-1594
 AP# 60-163-17

CALIFORNIA COORDINATE SYSTEM ORDER: FIRST SECOND THIRD

STATIONS USED: NGS (USC & GS) STATE COUNTY OTHER STATION _____ STATION _____

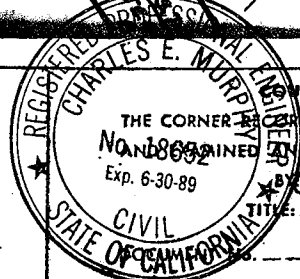
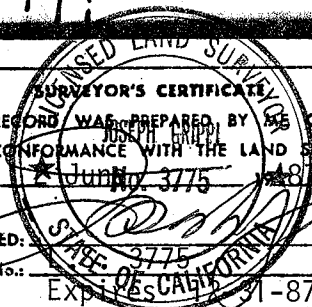
ZONE _____ ELEVATION _____ NORTHINGS (Y) _____ EASTINGS (X) _____

SKETCH: (Include reference tie or witness points, remarks and topo of area)



THIS CORNER RECORD WAS PREPARED BY ME OR UNDER MY DIRECTION IN CONFORMANCE WITH THE LAND SURVEYORS ACT ON _____

SIGNED: _____
 L.S. or R.C.E. No.: _____



THE CORNER WAS RECEIVED _____ 19____
 NONEXAMINED AND FILED _____ 1987
 Exp. 6-30-89
 TITLE: Rep. Co. Surv.

STATEMENT ON BACK OF SHEET

YES NO