

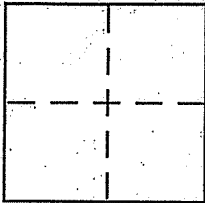
CORNER RECORD

Document Number 060-163-12

City of Belvedere

County of Marin, California

Brief Legal Description D.N. 07-043928



CORNER TYPE

- Government Corner Control
- Meander Property
- Rancho Other
- Date of Survey _____

COORDINATES (Optional)

N: _____
 E: _____
 Zone _____ NAD27 NAD83
 NAD83 Epoch _____
 Elev. _____
 Vert. Datum: NGVD29 NAVD88
 Meas. Units: Metric Imperial

Corner - Left as found Found and tagged Established Reestablished Rebuilt

Identification and type of corner found: Evidence used to identify or procedure used to establish or reestablish the corner:

see page 2

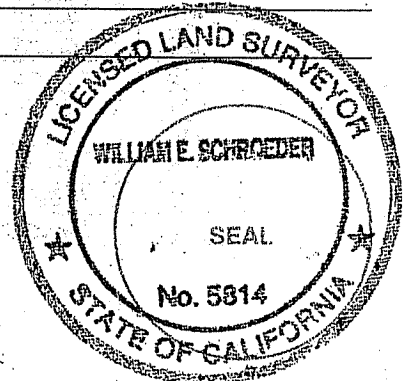
A description of the physical condition of the monument as found and as set or reset:

see page 2

SURVEYOR'S STATEMENT

This Corner Record was prepared by me or under my direction in conformance with

the Land Surveyor's Act on 5/11/11
 Signed [Signature] P.L.S. or R.C.E. No. 5814



COUNTY SURVEYOR'S STATEMENT

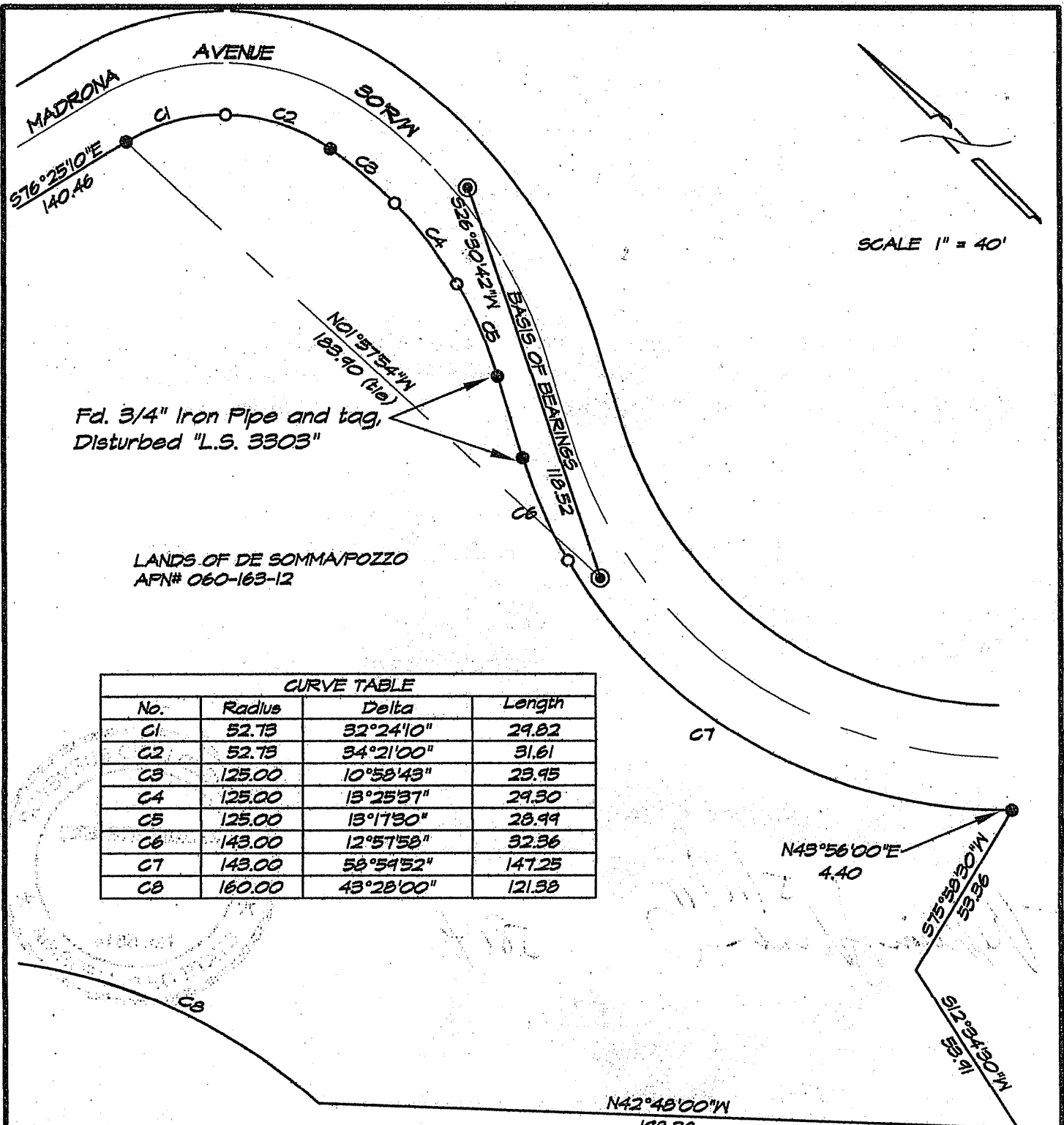
This Corner Record was received 5-27-2011

and examined and filed 6-1-2011

Signed [Signature] P.L.S. or R.C.E. No. 7128
 Title COUNTY SURVEYOR



County Surveyor's Comment _____



LEGEND

- = Found 3/4" Iron Pipe and tag, "LS 3303" per 18 RS 9
- = Set 3/4" Iron Pipe with plastic cap "LS 5814"
- ⊙ = Found Standard Street Monument

BASIS OF BEARINGS

The basis of bearings for this survey is N 26°30'42" E between the found Monuments as shown hereon

All distances are in feet and decimals thereof.

CORNER RECORD

LANDS OF DE SOMMA/POZZO,
 AS SHOWN IN
 BOOK 18 OF SURVEYS AT PAGE 9
 MARIN COUNTY RECORDS
 BELVEDERE, CALIFORNIA
 MAY 2011 SURVEY No. 1809
 PREPARED BY

WILLIAM SCHROEDER & ASSOCIATES

P.O. BOX 6801
 SAN RAFAEL CALIFORNIA
 AP # 060-163-12 SHEET 2 OF 2