

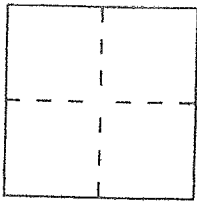
CORNER RECORD

Document Number 060-163-08

City of Belvedere

County of Marin, California

Brief Legal Description Lot 18 of 5 RM 68



CORNER TYPE

Government Corner Control
Meander Property
Rancho Other
Date of Survey 1/17/11

COORDINATES (Optional)

N. _____
E. _____
Zone _____ Datum _____
Elev. _____

Corner — Left as found Found and tagged Established Reestablished Rebuilt

Identification and type of corner found: Evidence used to identify or procedure used to establish or reestablish the corner:

Set new corners based on the original survey
2010 RS 28, Marin County Records

A description of the physical condition of the monument as found and as set or reset:

Set 1/2" iron bars & cap embossed LS 5290
on 1/17/11. This Corner Record is to document
the points set on that date.

SURVEYOR'S STATEMENT

This Corner Record was prepared by me or under my direction in conformance with the Land Surveyors' Act on Dec. 22, 2014

Signed David Harp L.S. or R.C.E. Number LS 5290



COUNTY SURVEYOR'S STATEMENT

This Corner Record was received 12/26/2014 and examined

and filed DECEMBER 29, 2014

Signed Rachel Smith Title DEPUTY



County Surveyor's Comment _____

- LIST OF MAPS USED BY THIS SURVEY
- M1 5 RM 68
 - M2 24 RS 51
 - M3 RS 2003-83
 - M4 PM 2004-155
 - M5 RS 2003-166

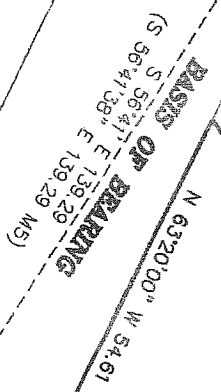
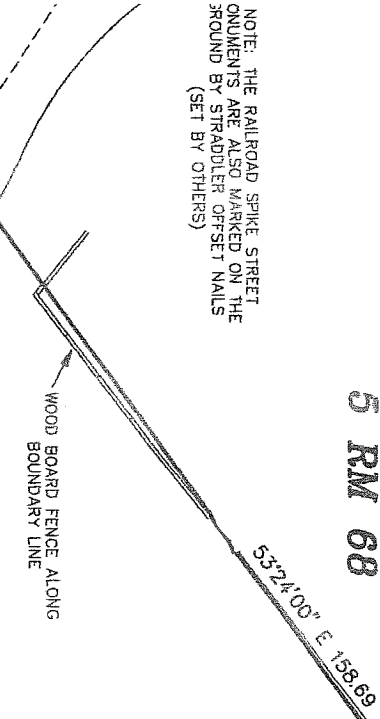
CHAFFEE
DN 06-78190

PARCEL 1

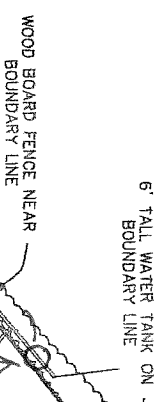
8
BLOCK C
5 RM 68
3/4" I.P. & CAP EMBOSSED LS 4933
BEARS N 75°14' E 0.37 (M4)

9
BLOCK C
5 RM 6
MOSS
DN 90-20946

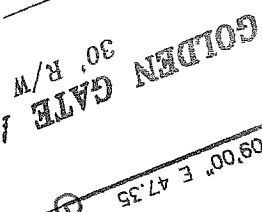
NOTE: THE RAILROAD SPIKE STREET
MONUMENTS ARE ALSO MARKED ON THE
GROUND BY STRADDLER OFFSET NAILS
(SET BY OTHERS)



2010 RS 28



RS 2003-166

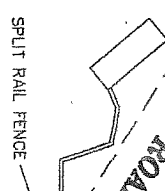


9
BLOCK B
5 RM 68

19
BLOCK C
5 RM 68
BARBARIA
DN 02-69977



SYMAN & RAI
DN 09-40581



3/4" I.P. & CAP EMBOSSET
BEARS N 72°06' E 0.41

