

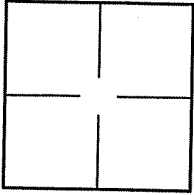
CORNER RECORD

Document Number A.P. 060-142-06, 060-162-14

City of BELVEDERE

County of MARIN, California

Brief Legal Description LOTS 6 & 7 PER 5 R.M. 68



CORNER TYPE

COORDINATES (Optional)

Government Corner Control
 Meander Property
 Rancho Other
 Date of Survey 07/02/08

N. _____
 E. _____
 Zone _____ NAD27 NAD83
 NAD83 Epoch _____
 Elev. _____
 Vert. Datum: NGVD29 NAVD88
 Meas. Units: Metric Imperial

Corner- Left as found Found and tagged Established Reestablished Rebuilt

Identification and type of corner found: Evidence used to identify or procedure used to establish or reestablish the corner:
REESTABLISHED NORTHERLY AND EASTERLY CORNERS OF LOT 6, THE NORTHEASTERLY LINE OF LOT 7,
AND THE SOUTHEASTERLY AND NORTHWESTERLY LINES OF LOT 6, AS SHOWN ON SHEET 2.

A description of the physical condition of the monument as found and as set or reset: SEE SHEET 2.

SURVEYOR'S STATEMENT

This Corner Record was prepared by me or under my direction in conformance with

the Land Surveyor's Act on JULY 2 2008

Signed Lawrence P Doyle P.L.S. or R.C.E. No. P.L.S. 4694



COUNTY SURVEYOR'S STATEMENT

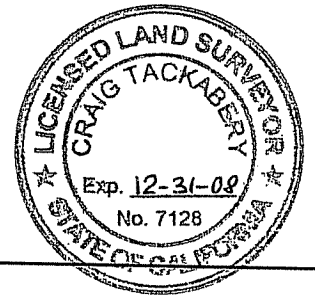
This Corner Record was received SEPTEMBER 17, 2008

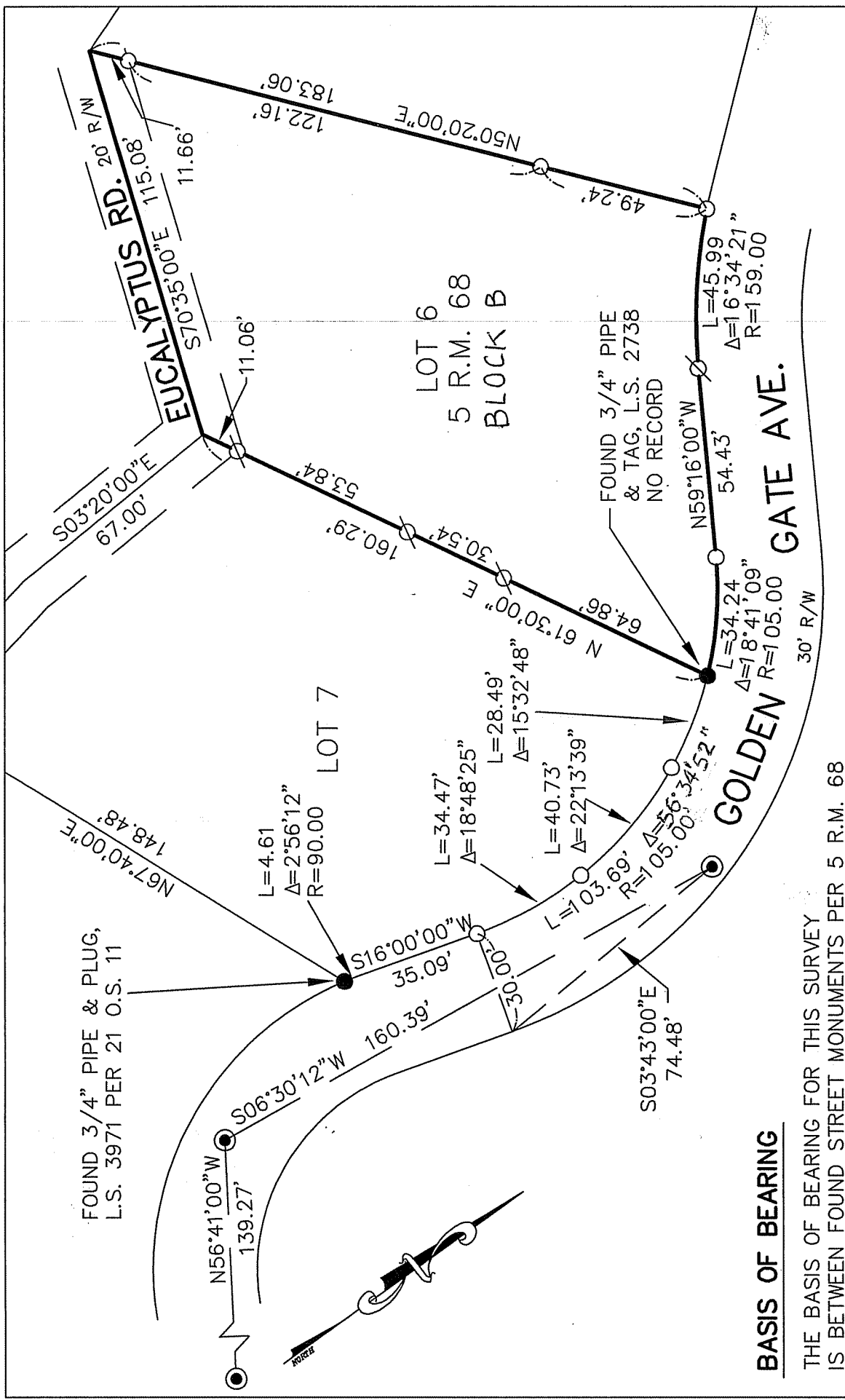
and examined and filed OCTOBER 14, 2008

Signed [Signature] P.L.S. or R.C.E. No. 7128

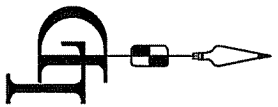
Title COUNTY SURVEYOR

County Surveyor's Comment _____





CORNER RECORD	
LOTS 6 & 7, BLOCK B, 5 R.M. 68	
BELVEDERE MARIN COUNTY CALIFORNIA	
SCALE: 1" = 40'	DRAWN BY:
DATE: 07/08/08	SHEET 1 OF 1
LAWRENCE P. DOYLE	
LAND SURVEYOR/CIVIL ENGINEER	
100 HELENS LANE MILL VALLEY CA 94941 (415-388-9585)	
DRAWING NO. 1819-08	



BASIS OF BEARING

THE BASIS OF BEARING FOR THIS SURVEY IS BETWEEN FOUND STREET MONUMENTS PER 5 R.M. 68

LEGEND

- FOUND STREET MONUMENT PER 5 R.M. 68
- FOUND PIPE (AS NOTED)
- ⊗ SET NAIL & TAG, L.S. 4694
- SET 3/4" PIPE & PLUG, L.S. 4694