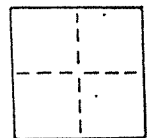


CORNER RECORD

COUNTY OF _____ T. _____ R. _____ MERIDIAN CALIFORNIA

CORNER TYPE: GOV'T. CORNER MEANDER RANCHO CONTROL OTHER

CORNER IDENTIFICATION — DATE OF VISIT June 19 89



Monument per 5 R.M. 68, sheet 4
 Near #81 & #101 Belvedere Ave., City of Belvedere
AP 60-161-21 & 60-181-30

CORNER — LEFT AS FOUND FOUND AND TAGGED REESTABLISHED OBLITERATED CORNER REBUILT

PHYSICAL DESCRIPTION OF CORNER FOUND; EVIDENCE AND METHOD USED TO IDENTIFY OR REESTABLISH
 Found railroad spike
 Original position perpetuated, distances not verified
 Offset during repaving

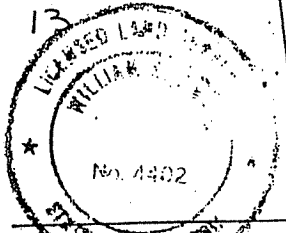
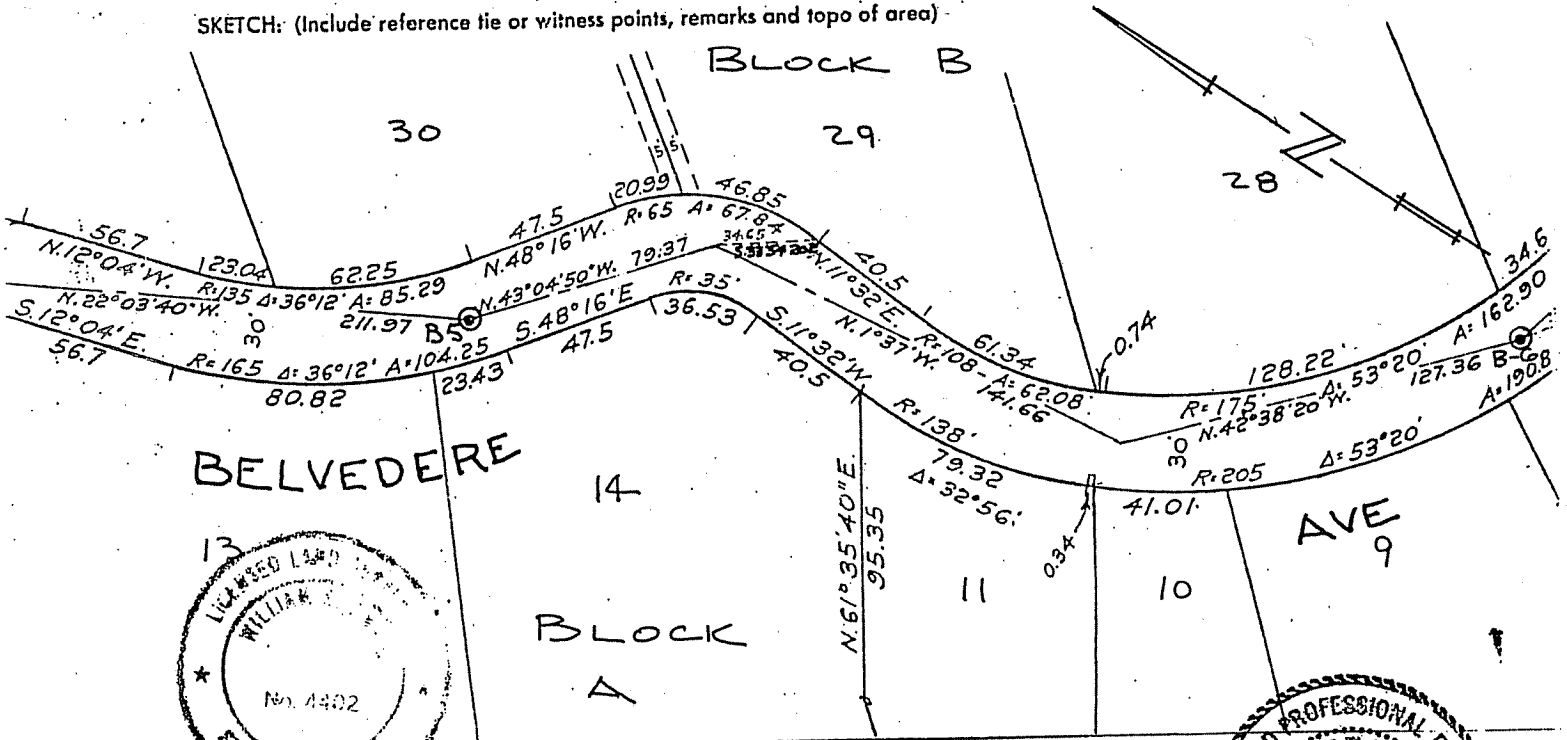
PHYSICAL DESCRIPTION OF MONUMENTS, REBUILT OR PERPETUATED
 Standard cast iron street monument

CALIFORNIA COORDINATE SYSTEM ORDER: FIRST SECOND THIRD

STATIONS USED: NGS (USC & GS) STATE COUNTY OTHER STATION _____ STATION _____

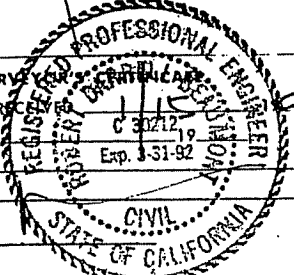
ZONE _____ ELEVATION _____ NORTHINGS (Y) _____ EASTINGS (X) _____

SKETCH: (Include reference tie or witness points, remarks and topo of area)



SURVEYOR'S CERTIFICATE
 THIS CORNER RECORD WAS PREPARED BY ME OR UNDER MY DIRECTION IN CONFORMANCE WITH THE LAND SURVEYORS ACT ON NOVEMBER 1 1990
 SIGNED: William J. Auer
 L.S. or R.C.E. No.: EXP 9-30-93

COUNTY SURVEYOR
 THE CORNER RECORD WAS RECHECKED AND EXAMINED AND FILED BY: _____ TITLE: _____
 DOCUMENT No. _____
 STATEMENT ON BACK OF SHEET YES NO



SEAL