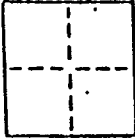


Anrig-Doyle

LICENSED LAND SURVEYORS CIVIL ENGINEERS  
165 Hilens Lane Mil Valley CA 94041 (415) 388-0067

CORNER RECORD

COUNTY OF T. R. MERIDIAN CALIFORNIA  
CORNER TYPE: GOVT. CORNER  MEANDER  RANCHO  CONTROL  OTHER   
CORNER IDENTIFICATION - DATE OF VISIT August 20 1990



Monument per 5 R.M. 68

Near the intersection of Oak and Bella Vista Aves. (3)  
City of Belvedere *AP BK 60 Pg 15*

CORNER - LEFT AS FOUND  FOUND AND TAGGED  REESTABLISHED OBLITERATED CORNER  REBUILT

PHYSICAL DESCRIPTION OF CORNER FOUND; EVIDENCE AND METHOD USED TO IDENTIFY OR REESTABLISH

Found nail in conc. (01) Found R.R. Spike (02) Found nail in conc. (BV1)

Original position perpetuated, distances not verified

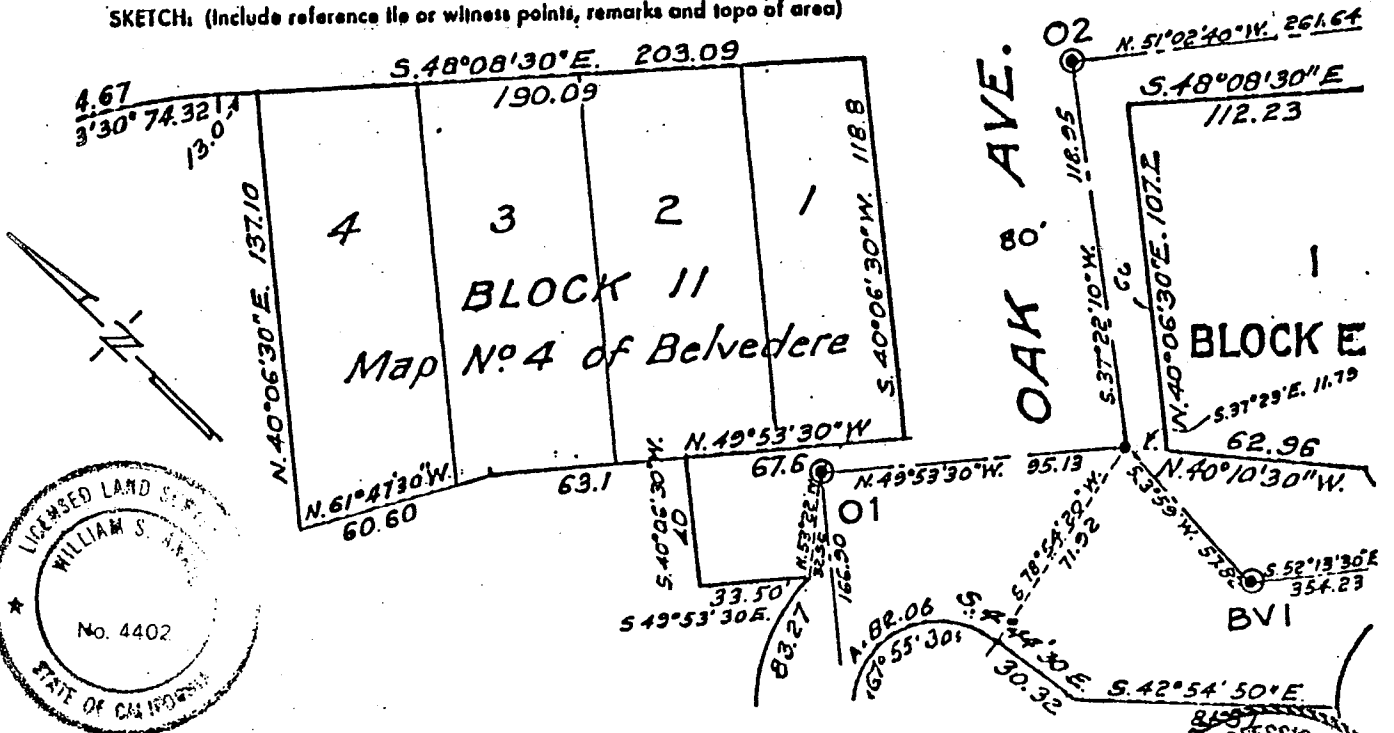
Set straddlers

PHYSICAL DESCRIPTION OF MONUMENTS, REBUILT OR PERPETUATED

Standard cast iron street monument

CALIFORNIA COORDINATE SYSTEM ORDER: FIRST  SECOND  THIRD   
STATIONS USED: NGS (USC & OS)  STATE  COUNTY  OTHER  STATION \_\_\_\_\_ STATION \_\_\_\_\_  
ZONE \_\_\_\_\_ ELEVATION \_\_\_\_\_ NORTHINGS (Y) \_\_\_\_\_ EASTINGS (X) \_\_\_\_\_

SKETCH: (Include reference tie or witness points, remarks and topo of area)



SURVEYOR'S CERTIFICATE  
THIS CORNER RECORD WAS PREPARED BY ME OR UNDER MY DIRECTION IN CONFORMANCE WITH THE LAND SURVEYORS ACT ON NOVEMBER 1 1990

SIGNED: William S. Anrig  
L.S. or R.C.E. No. L.S. 4402 EXP 9-30-93

COUNTY SURVEYOR  
THE CORNER RECORD WAS RECEIVED AND EXAMINED AND FILED BY: \_\_\_\_\_ TITLE: \_\_\_\_\_ DOCUMENT No. \_\_\_\_\_ STATEMENT ON BACK OF SHEET

