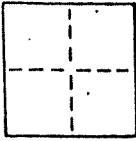


Anrig - Doyle

LICENSED LAND SURVEYORS CIVIL ENGINEERS
165 Helena Lane Mill Valley CA 94941 (415) 388-0067

CORNER RECORD

COUNTY OF _____ T. _____ R. _____ MERIDIAN CALIFORNIA
CORNER TYPE: GOVT. CORNER MEANDER RANCHO CONTROL OTHER
CORNER IDENTIFICATION - DATE OF VISIT August 20 19 90



Monuments per 5 R.M. 68

Near #20 Bella Vista Ave., City of Belvedere

Near #39 Bella Vista Ave., City of Belvedere

AP 60-154-19
(2) AP 60-171-02

CORNER - LEFT AS FOUND FOUND AND TAGGED REESTABLISHED OBLITERATED CORNER REBUILT

PHYSICAL DESCRIPTION OF CORNER FOUND, EVIDENCE AND METHOD USED TO IDENTIFY OR REESTABLISH

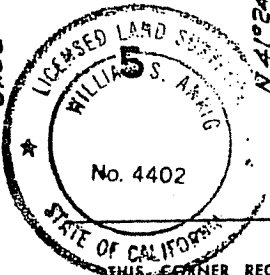
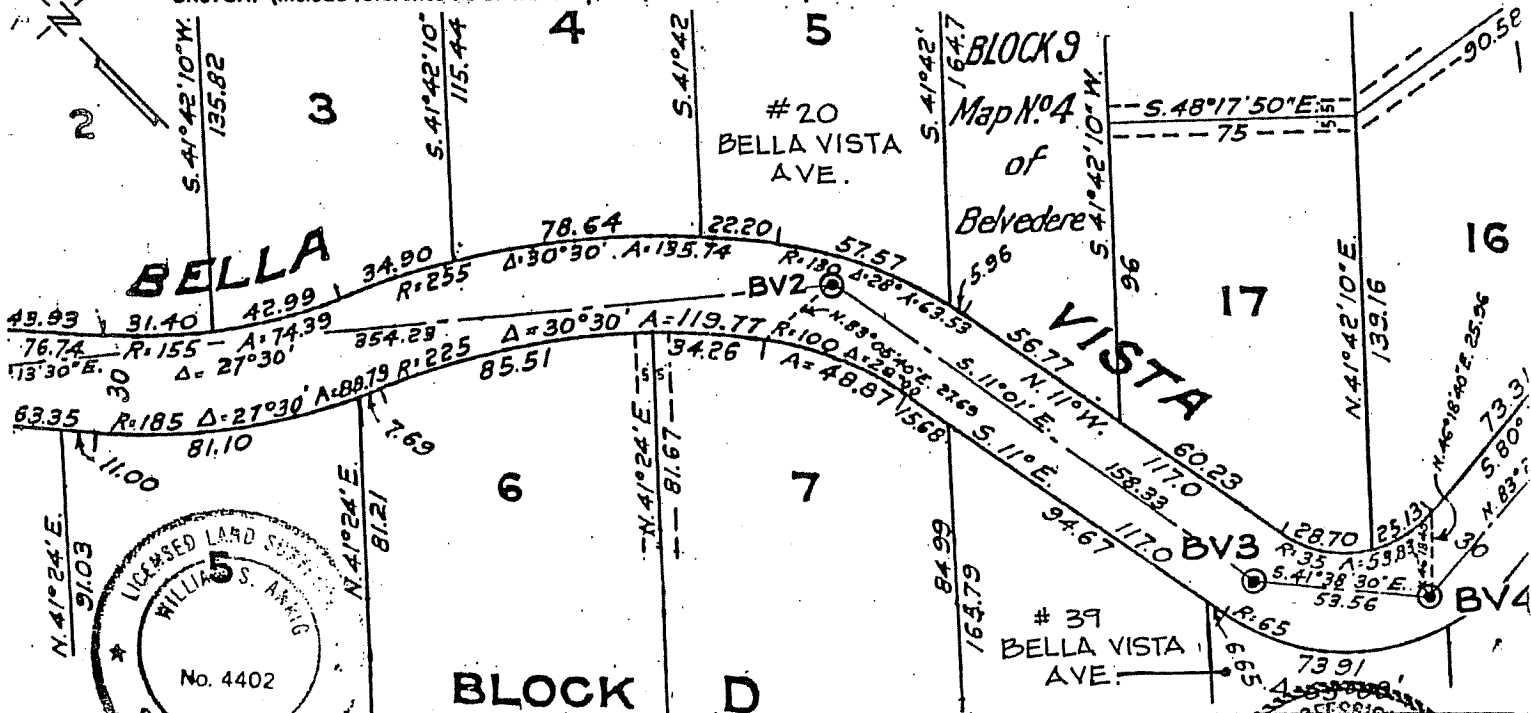
Found R.R. Spike (BV2) Found R.R. Spike (BV3) Found Conc. Nail (BV4)
Original positions perpetuated, distances not verified
Offset during repaving

PHYSICAL DESCRIPTION OF MONUMENTS, REBUILT OR PERPETUATED

Standard cast iron street monument

CALIFORNIA COORDINATE SYSTEM ORDER: FIRST SECOND THIRD
STATIONS USED: NGS (USC & GS) STATE COUNTY OTHER STATION _____ STATION _____
ZONE _____ ELEVATION _____ NORTHINGS (Y) _____ EASTINGS (X) _____

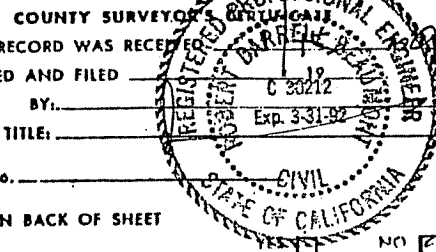
SKETCH: (Include reference tie or witness points, remarks and topo of area)



SURVEYOR'S CERTIFICATE

THIS CORNER RECORD WAS PREPARED BY ME OR UNDER MY
DIRECTION IN CONFORMANCE WITH THE LAND SURVEYORS ACT
ON NOVEMBER 1 19 90

SIGNED: *William S. Anrig*
L.S. or R.C.E. No. C.S. 4402 EXP 9-30-93



COUNTY SURVEYOR'S OFFICE
THE CORNER RECORD WAS RECEIVED
AND EXAMINED AND FILED
BY: _____
TITLE: _____

DOCUMENT No. _____
STATEMENT ON BACK OF SHEET

SEAL