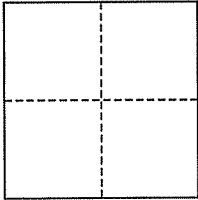


CORNER RECORD

City of Belvedere

Document Number AP# 060-154-11
County of Marin, California

Brief Legal Description Lot 15, Blk. E, 5 RM 68



CORNER TYPE

Government Corner Control
Meander Property
Rancho Other
Date of Survey March 9, 2011

COORDINATES (Optional)

N. _____
E. _____
Zone _____ NAD27 NAD83
NAD83 Epoch _____
Elev. _____
Vert. Datum: NGVD29 NAVD88
Meas. Units: Metric Imperial

Corner- Left as found Found and tagged Established Reestablished Rebuilt

Identification and type of corner found: Evidence used to identify or procedure used to establish or reestablish the corner:
Found Street Mons on Bella Vista Ave., per 5 RM 68, and Iron Pipe & Plug (RCE 30465) and Nail & Tag (RCE 30465), per Corner-Record, #060-154-10, 05 Jan 2007.

A description of the physical condition of the monument as found and as set or reset: Set Iron Pipe & Plug (RCE 30465) on most Westerly Corner, and set a Nail in concrete walk on the South-Easterly line.

SURVEYOR'S STATEMENT

This corner Record was prepared by me or under my direction in conformance with
the Land Surveyor's Act on March 10, 2011

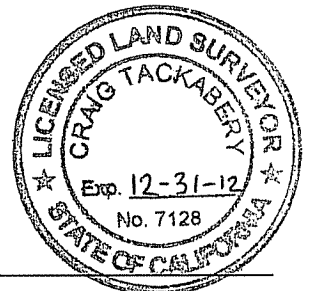
Signed [Signature] P.L.S. or R.C.E. No. 30465



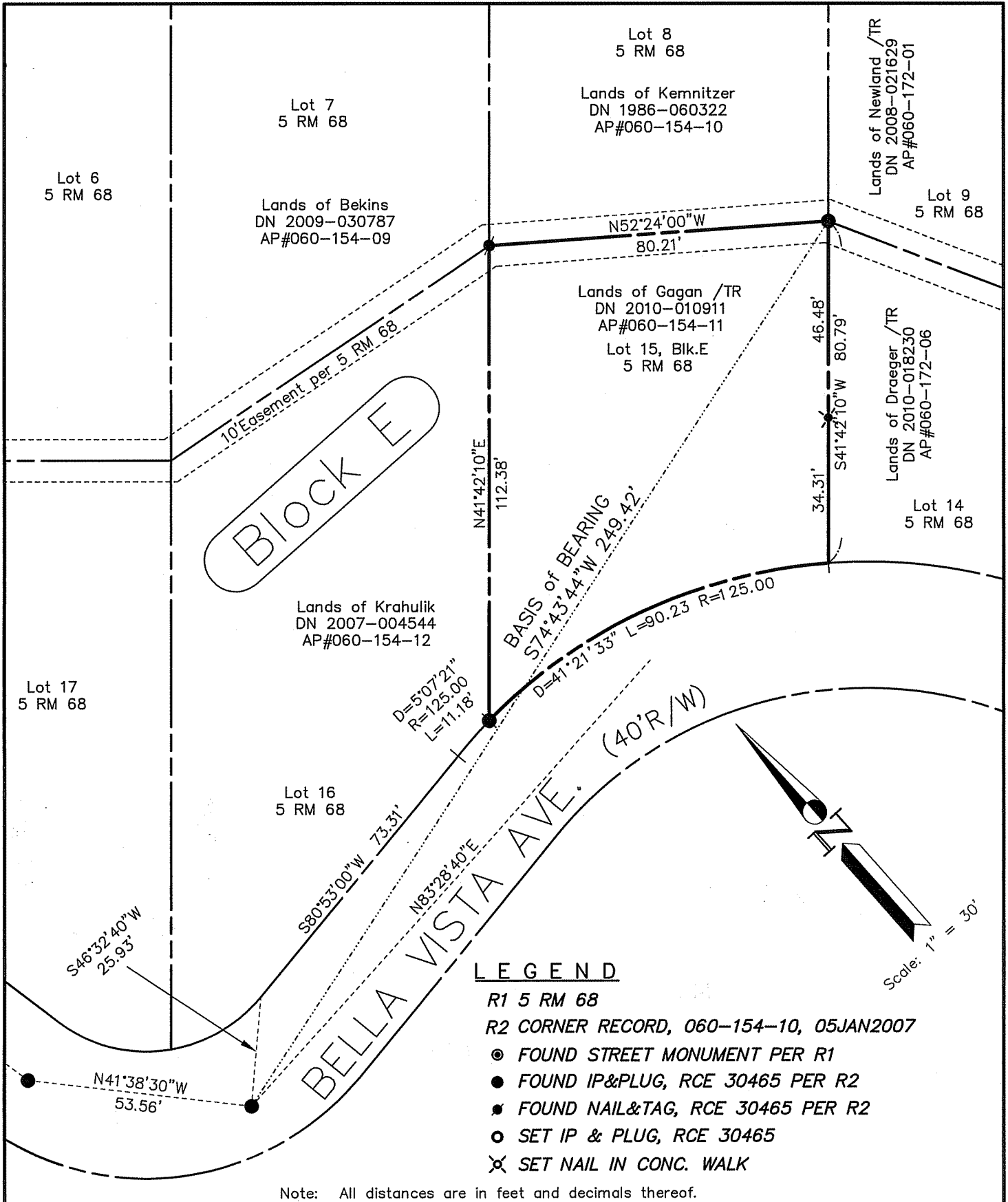
COUNTY SURVEYOR'S STATEMENT

This Corner Record was received MARCH 14, 2011
and examined and filed JUNE 22, 2011

Signed [Signature] P.L.S. or R.C.E. No. 7128
Title COUNTY SURVEYOR



County Surveyor's Comment _____



SHEET	1	OF	1
SCALE:	1" = 30'	DESIGN:	PR
DATE:	Mar 2011	DRAWN:	PR
FILE:	2011-029	CHECKED:	J.L.H

2011-029\DWG\11-029-BASE,COR-REC

J.L. ENGINEERING
CIVIL ENGINEERS-LAND SURVEYORS
 1539 4th ST., SAN RAFAEL, CA. 94901 (415) 457-6647

Corner Record
 Lands of Gagan /TR - 40 Bella Vista Ave.
 APN 060-154-11, Belvedere, Marin County, CA