

# CORNER RECORD

Agency Index 21-152

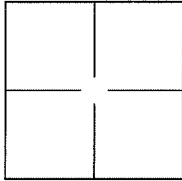
Document Number 060-153-10

City of Belvedere County of Marin, California

Brief Legal Description Lot 14, Block D, 5 Maps 68 / "LANDS OF HULME & VAN MEURS" parcel, 24 Parcel Maps 46

### CORNER TYPE

### COORDINATES (Optional)



Government Corner  Control   
 Meander  Property   
 Rancho  Other

N. \_\_\_\_\_ E. \_\_\_\_\_  
 Elevation \_\_\_\_\_

Units Metric  U.S. Survey Foot

Horizontal Datum \_\_\_\_\_

Zone \_\_\_\_\_ Epoch Date \_\_\_\_\_

Date of Survey May 28, 2021

Vertical Datum \_\_\_\_\_

Complies with Public Resources Code §§8801-8819

Complies with Public Resources Code §§88900-8902

PLS Act Ref.:  8765(d)  8771  8773  Other:

Corner/ Monument:  Left as found  Established  Rebuilt  Pre-Construction

Found and tagged  Reestablished  Referenced  Post-Construction

Narrative of corner identified and monument as found, set, reset, replaced, or removed:

See sheet #2 for description(s):

FOUND (2) STREET MONUMENTS IN SAME LOCATION AS SHOWN ON 24 PM 46

SET (2) 3/4" BRASS TAGS & TACKS "LS 7735"

SET (8) WOOD GINNIES WITH BRASS TAGS & TACKS "LS 7735"

### SURVEYOR'S STATEMENT

This Corner Record was prepared by me or under my direction in conformance with

the Professional Land Surveyor's Act on AUGUST 10, 2021

Signed \_\_\_\_\_ P.L.S. or R.C.E. No. LS 7735



### COUNTY SURVEYOR'S STATEMENT

This Corner Record was received B-10-21

and examined and filed 1-31-22

Signed JHL P.L.S. or R.C.E. No. 9292

Title DEPUTY

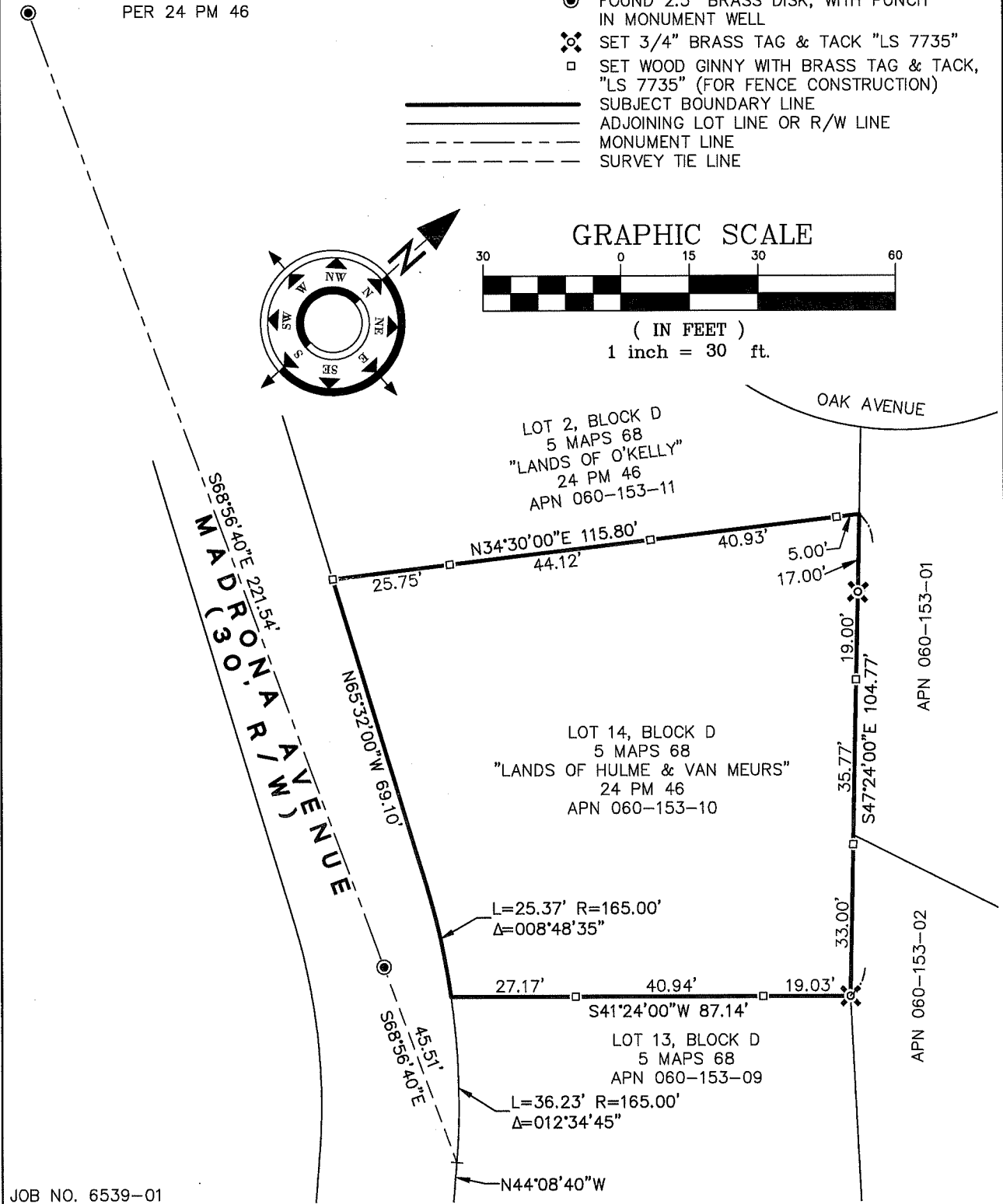
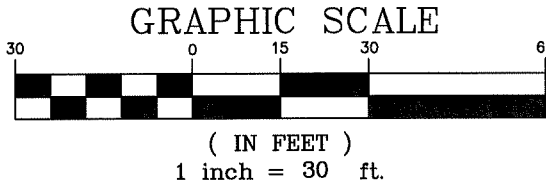
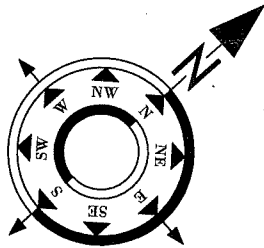
County Surveyor's Comment:



**NOTE:**  
 ALL BEARINGS, DISTANCES AND CURVE  
 DATA ARE RECORD INFORMATION SHOWN  
 PER 24 PM 46

**LEGEND**

- R/W RIGHT-OF-WAY
- FOUND 2.5" BRASS DISK, WITH PUNCH  
IN MONUMENT WELL
- ⊗ SET 3/4" BRASS TAG & TACK "LS 7735"
- SET WOOD GINNY WITH BRASS TAG & TACK,  
"LS 7735" (FOR FENCE CONSTRUCTION)
- SUBJECT BOUNDARY LINE
- ===== ADJOINING LOT LINE OR R/W LINE
- MONUMENT LINE
- - - - - SURVEY TIE LINE



JOB NO. 6539-01