



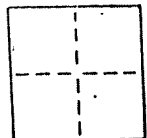
AD  
 LICENSED LAND SURVEYORS CIVIL ENGINEERS  
 165 Helens Lane Mill Valley CA 94941 (415) 388-0067

### CORNER RECORD

COUNTY OF \_\_\_\_\_ T. \_\_\_\_\_ R. \_\_\_\_\_ MERIDIAN \_\_\_\_\_ CALIFORNIA

CORNER TYPE: GOVT. CORNER  MEANDER  RANCHO  CONTROL  OTHER

CORNER IDENTIFICATION — DATE OF VISIT August 20 1990



Monuments per 5 R.M. 68  
 Near #40 Madrona Ave, City of Belvedere  
 Near # 118 Madrona Ave., City of Belvedere  
 120

AP 60-153-08  
 60-171-13

CORNER — LEFT AS FOUND  FOUND AND TAGGED  REESTABLISHED OBLITERATED CORNER  REBUILT

PHYSICAL DESCRIPTION OF CORNER FOUND; EVIDENCE AND METHOD USED TO IDENTIFY OR REESTABLISH

Found 3/4" pipe  
 Found railroad spike

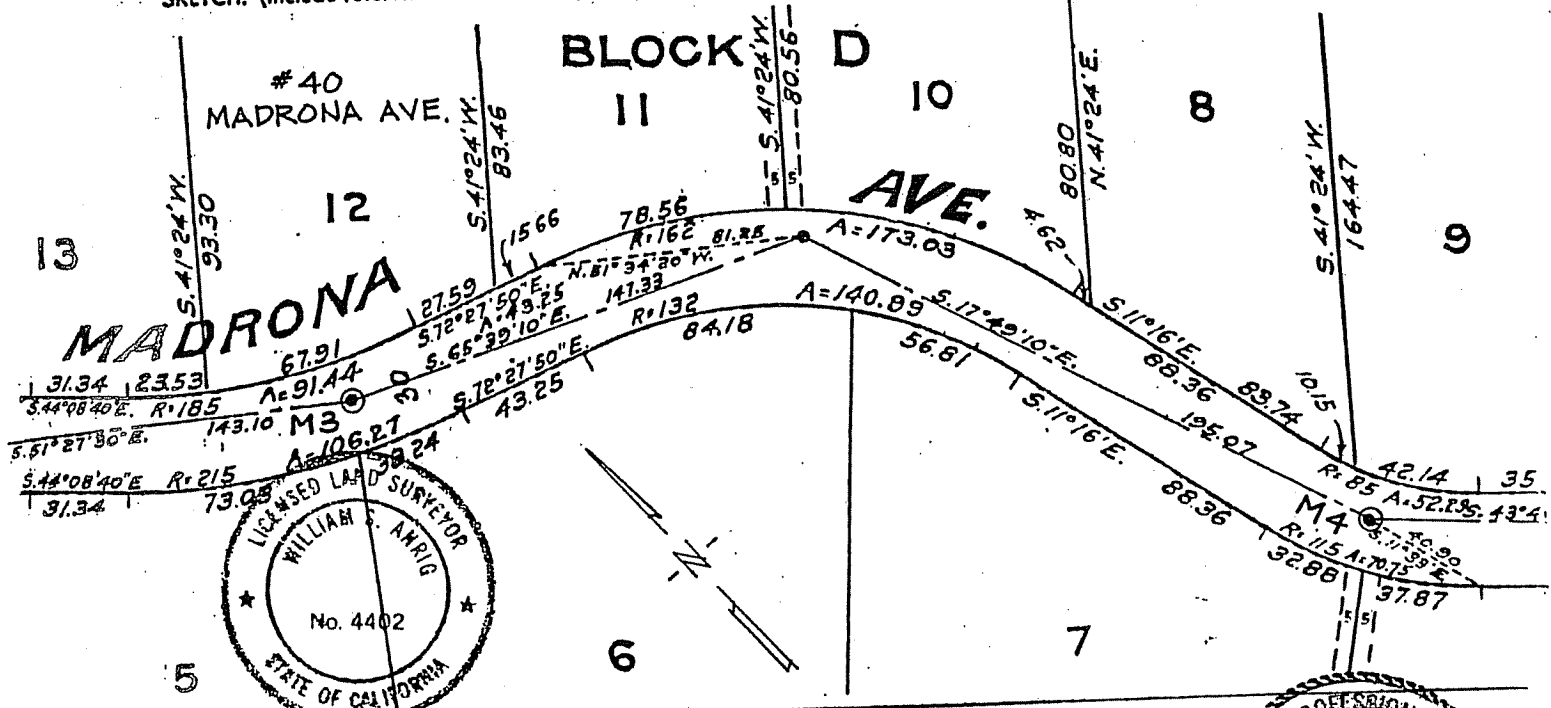
Original positions perpetuated, distances not verified  
 Offset during repaving

PHYSICAL DESCRIPTION OF MONUMENTS, REBUILT OR PERPETUATED

Standard cast iron street monuments

CALIFORNIA COORDINATE SYSTEM ORDER: FIRST  SECOND  THIRD   
 STATIONS USED: NGS (USC & GS)  STATE  COUNTY  OTHER  STATION \_\_\_\_\_  
 ZONE \_\_\_\_\_ ELEVATION \_\_\_\_\_ NORTHINGS (Y) \_\_\_\_\_ EASTINGS (X) \_\_\_\_\_

SKETCH: (Include reference tie or witness points, remarks and topo of area)



**SURVEYOR'S CERTIFICATE**  
 THIS CORNER RECORD WAS PREPARED BY ME OR UNDER MY DIRECTION IN CONFORMANCE WITH THE LAND SURVEYORS ACT ON NOVEMBER 1 1990  
 SIGNED: William S. Ankig  
 L.S. or R.C.E. No. L.S. 4402 EXP 9-30-93

COUNTY SURVEYOR'S CERTIFICATE  
 THE CORNER RECORD WAS RECEIVED AND EXAMINED AND FILED BY: \_\_\_\_\_ TITLE: \_\_\_\_\_ DOCUMENT No. \_\_\_\_\_ STATEMENT ON BACK OF SHEET

SEAL