

CORNER RECORD

Document Number APN 060-153-08
County of Marin, California

City of Belvedere

Brief Description: Monument M3 "Corner Record AP 60-153-08 & 60-171-13", Marin County Records.

CORNER TYPE

COORDINATES

(Optional)

Government Corner
Meander
Rancho
Date of Survey June 2006

Control
Property
Other

N. _____
E. _____
Zone _____ Datum _____
Elev. _____

Corner --Left as found Found and tagged Established Reestablished Rebuilt

Identification and type of corner found: Evidence used to identify or procedure used to establish or reestablish the corner.

This survey is based upon that certain Corner Record "AP 60-153-08, 60-171-13", Marin County Records.

A Description of the physical condition of the monument as found and as set or reset.

Brass disc set in concrete stamped "City of Belvedere, PLS 7053" in standard well monument as shown on sheet two.

SURVEYOR'S STATEMENT

This Corner Record was prepared by me or under my direction in conformance with the Professional Land Act on 12-13 2006.

Signed *Linda A. Carruthers* P.L.S. 7053



COUNTY SURVEYOR'S STATEMENT

This Corner Record was received DECEMBER 14, 2006 and examined and filed DECEMBER 18, 2006.

Signed *[Signature]* Title COUNTY SURVEYOR

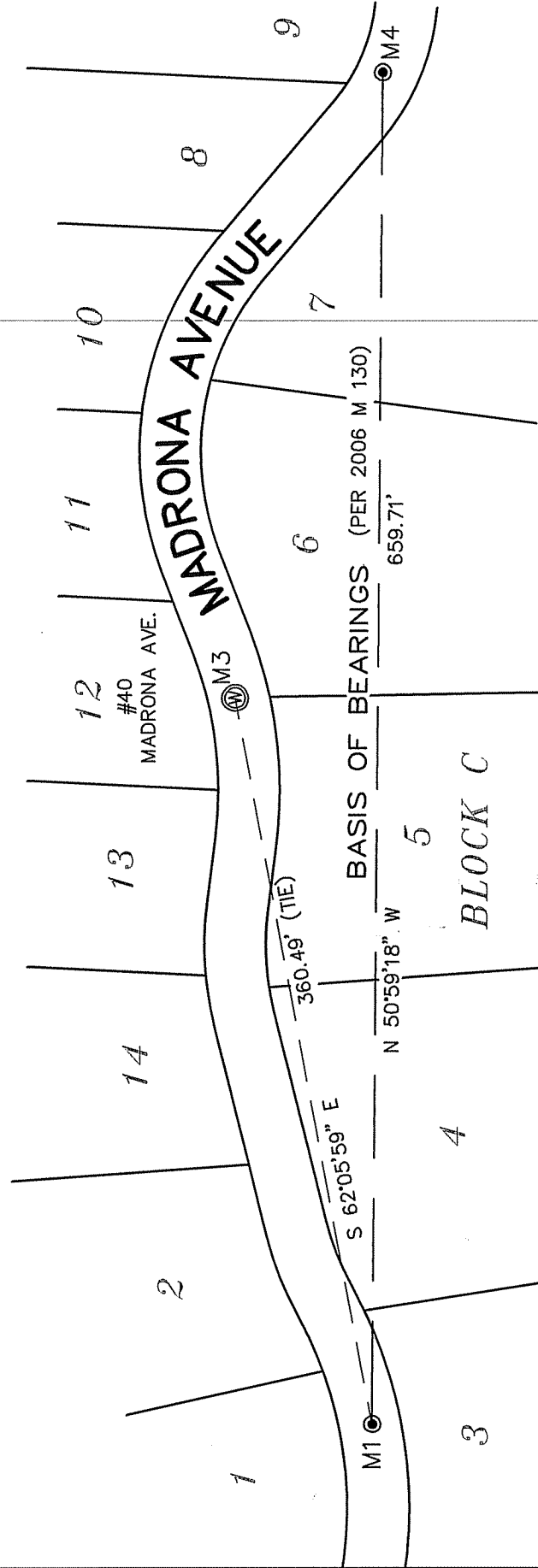


County Surveyor's Comments _____

LEGEND

- ⊙ EXISTING WELL MONUMENT
- ⊙ BRASS DISC STAMPED "CITY OF BELVEDERE, PLS 7053"
SET IN CONCRETE IN STANDARD WELL MONUMENT

5 R.M. 68
BLOCK D



MONUMENT M3 RESET
NEAR 40 MADRONA AVENUE
BELVEDERE, CALIFORNIA

LINDA A. CARRUTHERS & ASSOCIATES
2015 BRIDGEWAY, STE. 301D
SAUSALITO, CA 94965

SCALE: 1"=80' SHEET 2 OF 2 DATE: JUNE 2006
JOB NO. 06-602 APN 060-153-08

NOTE:
MONUMENT M3 RESET AFTER CONSTRUCTION BY THE CITY OF BELVEDERE. THIS SURVEY WAS CONDUCTED TO SHOW THE FIELD POSITION OF THE MONUMENT WHICH MAY OR MAY NOT BE IN THE ORIGINAL POSITION.