



Anrig-Doyle

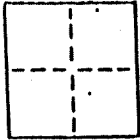
LICENSED LAND SURVEYORS CIVIL ENGINEERS
165 Highland Lane Mil Valley CA 94041 (415) 388-0067

CORNER RECORD

COUNTY OF _____ T. _____ R. _____ MERIDIAN CALIFORNIA

CORNER TYPE: GOVT. CORNER MEANDER RANCHO CONTROL OTHER

CORNER IDENTIFICATION - DATE OF VISIT August 20 1990



Monument per 5 R.M. 68
Near the intersection of Oak and Bella Vista Aves. (3)
City of Belvedere *AP BK 60 Pg 15*

CORNER - LEFT AS FOUND FOUND AND TAGGED REESTABLISHED OBLITERATED CORNER REBUILT

PHYSICAL DESCRIPTION OF CORNER FOUND, EVIDENCE AND METHOD USED TO IDENTIFY OR REESTABLISH

Found nail in conc. (01) Found R.R. Spike (02) Found nail in conc. (BV1)
Original position perpetuated, distances not verified
Set straddlers

PHYSICAL DESCRIPTION OF MONUMENTS, REBUILT OR PERPETUATED

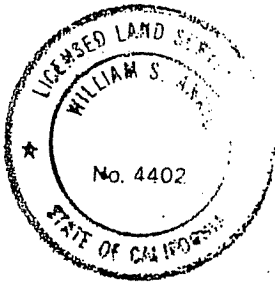
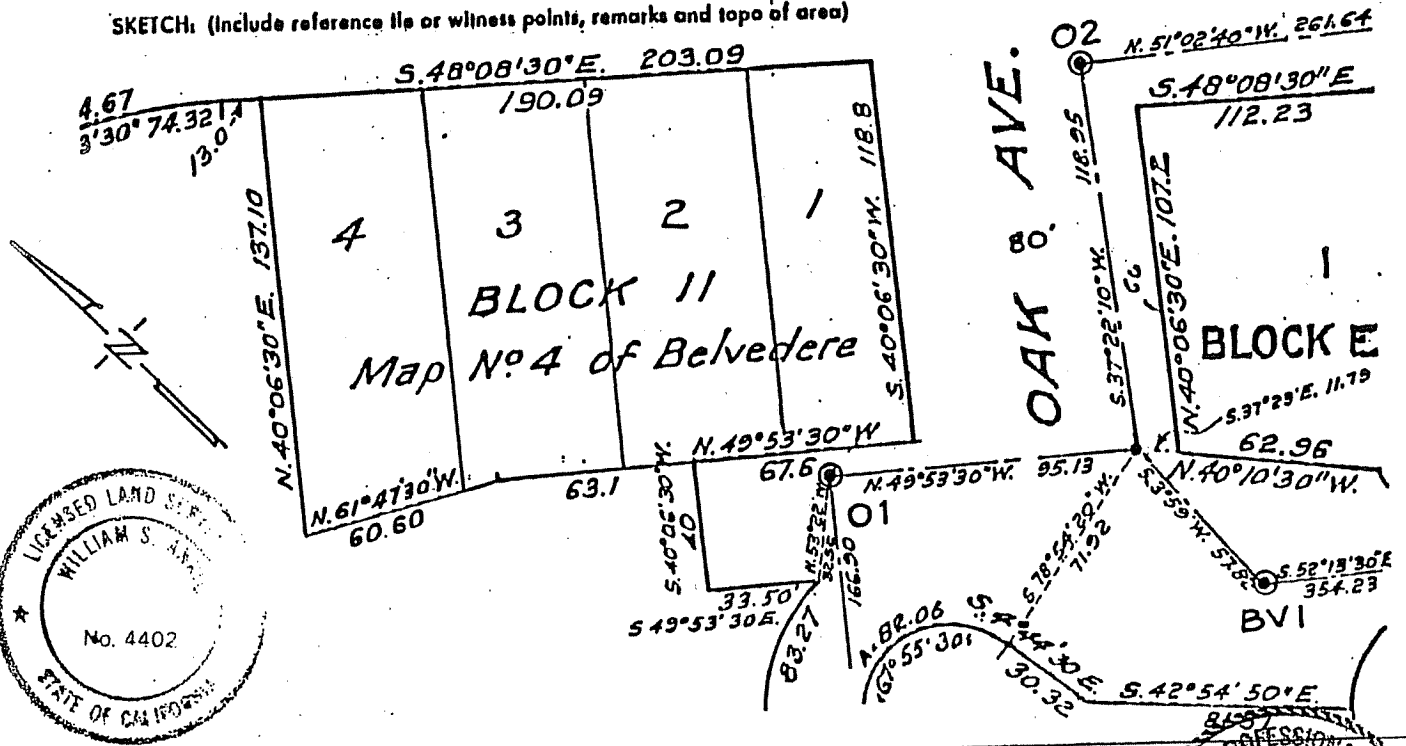
Standard cast iron street monument

CALIFORNIA COORDINATE SYSTEM ORDER: FIRST SECOND THIRD

STATIONS USED: NGS (USC & OS) STATE COUNTY OTHER STATION _____

ZONE _____ ELEVATION _____ NORTHINGS (Y) _____ EASTINGS (X) _____

SKETCH: (Include reference file or witness points, remarks and topo of area)



SURVEYOR'S CERTIFICATE
THIS CORNER RECORD WAS PREPARED BY ME OR UNDER MY DIRECTION IN CONFORMANCE WITH THE LAND SURVEYORS ACT ON NOVEMBER 1 1990

SIGNED: *William S. Anrig*
L.S. or R.C.E. No. L.S. 4402 EXP 9-30-93

COUNTY SURVEYOR _____
THE CORNER RECORD WAS RECEIVED AND EXAMINED AND FILED BY: _____ TITLE: _____
DOCUMENT No. _____
STATEMENT ON BACK OF SHEET _____

