

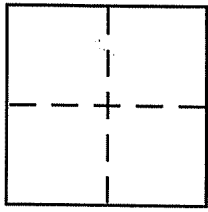
CORNER RECORD

Document Number APN 060-141-16

City of BELVEDERE

County of MARIN, California

Brief Legal Description PCL 2 PER 23 P.M.94



CORNER TYPE

Government Corner Control
Meander Property
Rancho Other
Date of Survey 8-14-07

COORDINATES (Optional)

N. _____
E. _____
Zone _____ NAD27 NAD83
NAD83 Epoch _____
Elev. _____
Vert. Datum: NGVD29 NAVD88
Meas. Units: Metric Imperial

Corner - Left as found Found and tagged Established Reestablished Rebuilt

Identification and type of corner found: Evidence used to identify or procedure used to establish or reestablish the corner:

= SEE OVER =

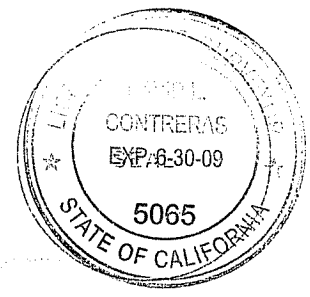
A description of the physical condition of the monument as found and as set or reset:

= SEE OVER =

SURVEYOR'S STATEMENT

This Corner Record was prepared by me or under my direction in conformance with the Land Surveyor's Act on DEC. 16 2007

Signed David Montecinos P.L.S. or R.C.E. No. _____



COUNTY SURVEYOR'S STATEMENT

This Corner Record was received DECEMBER 19, 2007

and examined and filed JANUARY 15, 2008

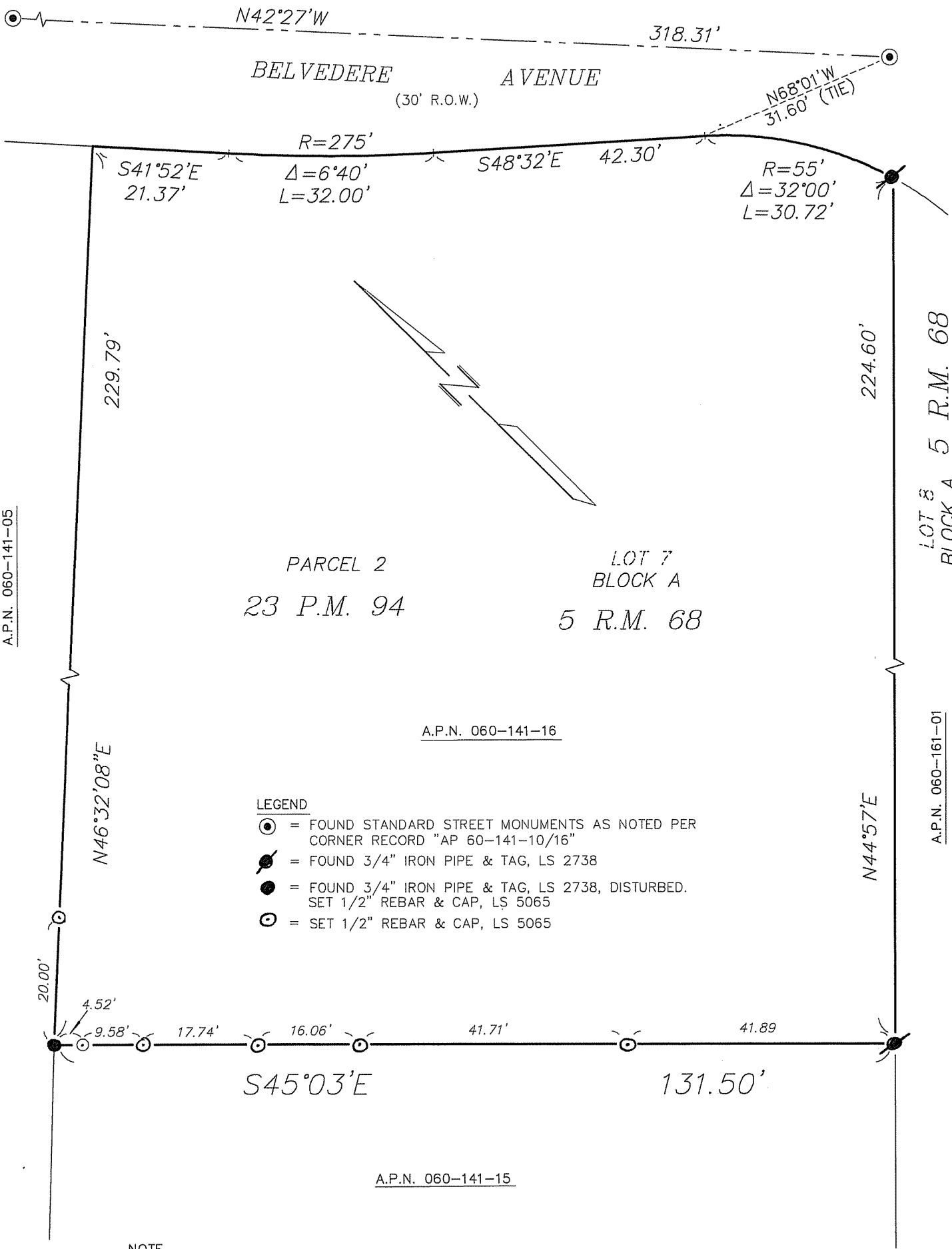
Signed _____ P.L.S. or R.C.E. No. 7128

Title COUNTY SURVEYOR



County Surveyor's Comment _____

A.P.N. 060-141-05



PARCEL 2
23 P.M. 94

LOT 7
BLOCK A
5 R.M. 68

A.P.N. 060-141-16

A.P.N. 060-141-15

LEGEND

- ⊙ = FOUND STANDARD STREET MONUMENTS AS NOTED PER CORNER RECORD "AP 60-141-10/16"
- ⊙ = FOUND 3/4" IRON PIPE & TAG, LS 2738
- ⊙ = FOUND 3/4" IRON PIPE & TAG, LS 2738, DISTURBED. SET 1/2" REBAR & CAP, LS 5065
- ⊙ = SET 1/2" REBAR & CAP, LS 5065

NOTE

1) EASEMENTS ARE NOT SHOWN

SCALE : 1"=20'



LOT 8
BLOCK A
5 R.M. 68

A.P.N. 060-161-01

200 MAPS 114