

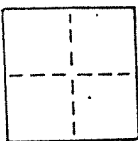
CORNER RECORD

COUNTY OF _____ T. _____ R. _____ MERIDIAN CALIFORNIA

CORNER TYPE: GOV'T. CORNER MEANDER RANCHO CONTROL OTHER

CORNER IDENTIFICATION — DATE OF VISIT June 1989

AP 60-141-10
60-141-16



Monument per 5 R.M. 68, sheet 7

Near #19 & #35 Belvedere Ave., City of Belvedere

CORNER — LEFT AS FOUND FOUND AND TAGGED REESTABLISHED OBLITERATED CORNER REBUILT

PHYSICAL DESCRIPTION OF CORNER FOUND; EVIDENCE AND METHOD USED TO IDENTIFY OR REESTABLISH

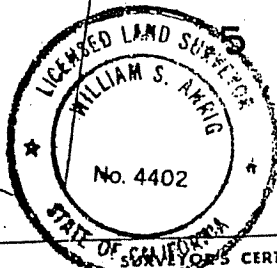
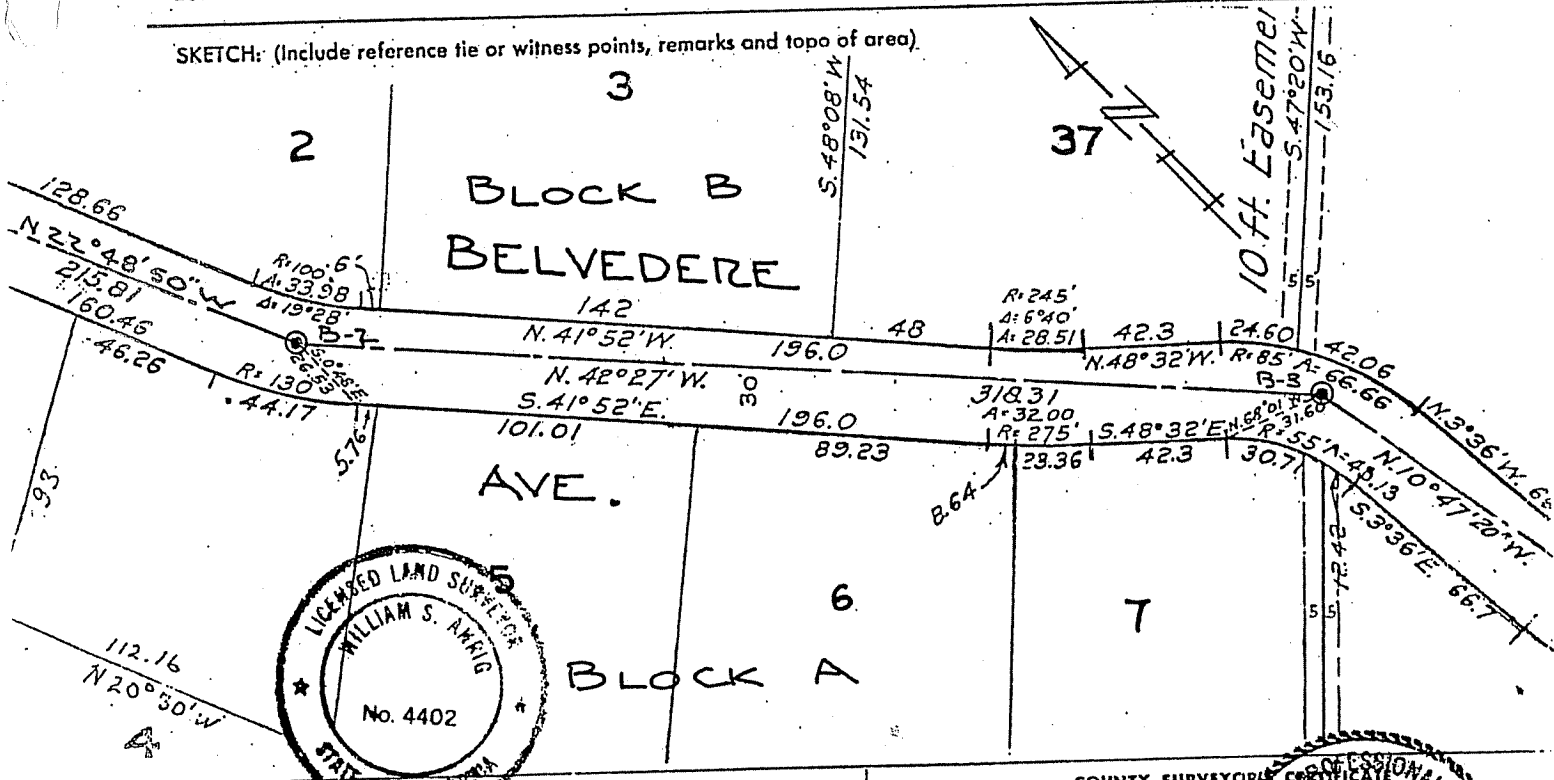
Found railroad spike
Original position perpetuated, distances not verified
Offset during repaving

PHYSICAL DESCRIPTION OF MONUMENTS, REBUILT OR PERPETUATED

Standard cast iron street monument

CALIFORNIA COORDINATE SYSTEM ORDER: FIRST SECOND THIRD STATION _____ STATION _____
STATIONS USED: NGS (USC & GS) STATE COUNTY OTHER EASTINGS (X) _____
ZONE _____ ELEVATION _____ NORTHINGS (Y) _____

SKETCH: (Include reference tie or witness points, remarks and topo of area)



THIS CORNER RECORD WAS PREPARED BY ME OR UNDER MY DIRECTION IN CONFORMANCE WITH THE LAND SURVEYORS ACT ON NOVEMBER 1990

SIGNED: William S. Amig
L.S. or R.C.E. No.: L.S. 4402 Exp 9-30-93

SEAL

COUNTY SURVEYOR'S PROFESSIONAL ENGINEER CERTIFICATE
THE CORNER RECORD WAS RECEIVED AND EXAMINED AND FILED BY: _____ TITLE: _____
DOCUMENT No. _____ STATEMENT ON BACK OF SHEET

