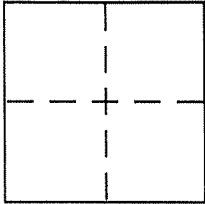


CORNER RECORD

A.P.N. Document Number 060-141-16
County of MARIN, California

City of BELVEDERE

Brief Legal Description PARCEL 2 PER 23 P.M. 94



CORNER TYPE

Government Corner Control
Meander Property
Rancho Other
Date of Survey _____

COORDINATES (Optional)

N. _____
E. _____
Zone _____ NAD27 NAD83
NAD83 Epoch _____
Elev. _____
Vert. Datum: NGVD29 NAVD88
Meas. Units: Metric Imperial

Corner - Left as found Found and tagged Established Reestablished Rebuilt

Identification and type of corner found: Evidence used to identify or procedure used to establish or reestablish the corner:

= SEE OVER =

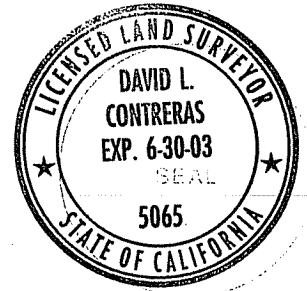
A description of the physical condition of the monument as found and as set or reset:

= SEE OVER =

SURVEYOR'S STATEMENT

This Corner Record was prepared by me or under my direction in conformance with the Land Surveyor's Act on NOVEMBER 30, 2001

Signed David Contreras P.L.S or R.C.E. No. 5065



COUNTY SURVEYOR'S STATEMENT

This Corner Record was received DECEMBER 14, 2001

and examined and filed DECEMBER 17, 2001

Signed [Signature] P.L.S or R.C.E. No. 7128

Title DEPUTY



County Surveyor's Comment _____

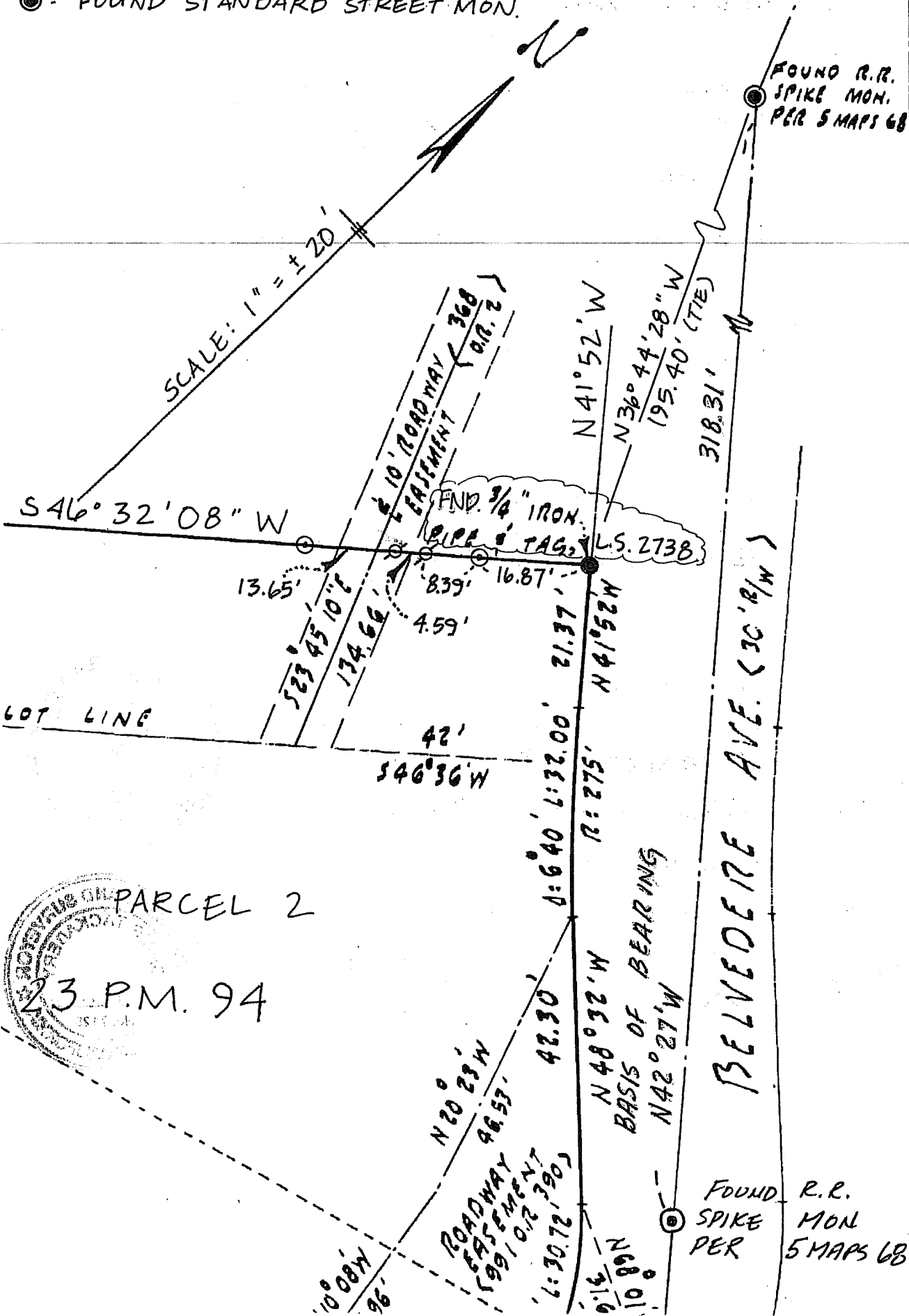
● = FOUND 3/4" IRON PIPE & TAG, L.S. 2738

○ = SET 1/2" REBAR & CAP, L.S. 5065

⊘ = SET NAIL & TAG, L.S. 5065

⊙ = FOUND STANDARD STREET MON.

74



PARCEL 2

23 P.M. 94

