

L. A. Stevens & Associates, Inc.
Professional Land Surveyors
Novato, California

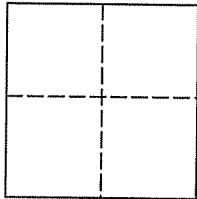
Lands of Goldfischer
Job #: 00-447

CORNER RECORD

Document Number 060-141-12

City of Belvedere, County of Marin, California

Brief Legal Description: Being a portion of Lot 2, Block A, as shown on that certain map entitled "Map of Re-subdivision of part of the City of Belvedere, Marin County, California", filed for record in Volume 5 of Maps at Page 68, Marin County Records.



CORNER TYPE

Government Corner Control
Meander Property
Rancho Other

Date of Survey August 19, 2000

COORDINATES (Optional)

N _____
E _____
Zone _____ NAD27 NAD83
NAD 83 Epoch _____
Elev. _____
Vert. Datum: NGVD29 NAVD88
Meas. Units: Metric Imperial

Corner - Left as found Found and tagged Established Reestablished Rebuilt

Identification and type of corner found: Evidence used to identify or procedure used to establish or reestablish the corner:
See Page 2 of 2

A description of the physical condition of the monument as found and as set or reset:
See Page 2 of 2

SURVEYOR'S STATEMENT

This Corner Record was prepared by me or under my direction in conformance with

The Land Surveyor's Act on October 24, 2007.

Signed [Signature] P.L.S 6649



COUNTY SURVEYOR'S STATEMENT

This Corner Record was received OCTOBER 26, 2007

and examined and filed DECEMBER 17, 2007

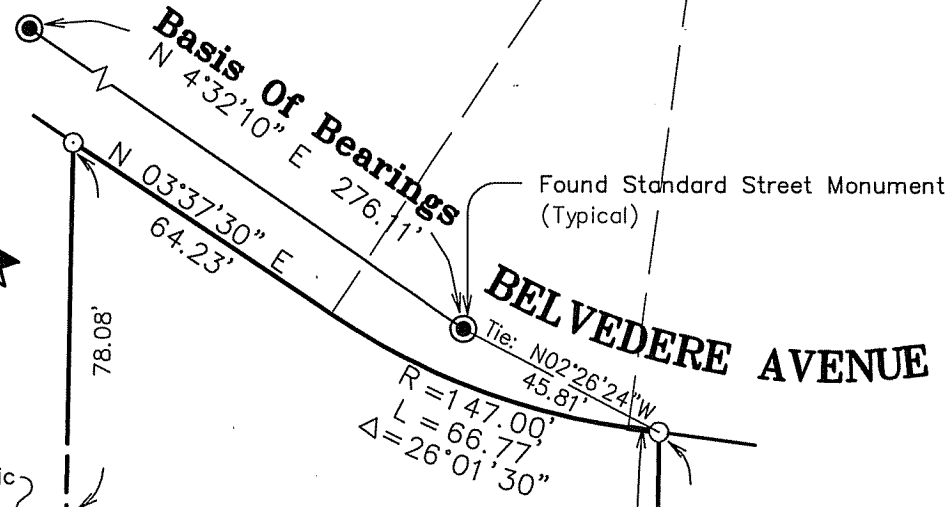
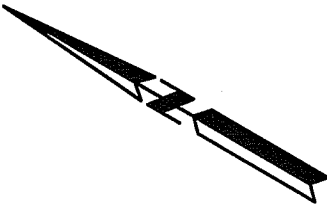
Signed [Signature] P.L.S. or R.C.E. No. 7128

Title COUNTY SURVEYOR

County Surveyors' Comment _____



All distances shown are in feet and decimals thereof



Set 3/4" Iron Pipe & Plastic Plug Stamped, "LS 6649" (Typical)

Lands of Eldred (91-75893)

Lands of Goldfisher
(Portion of Lot 2 Block A, 5 RM 68-7)
(99-063191)

S22°24'00"E
6.382'

Lands of La Corte (99-023097)

Set Nail & Plastic Tag Stamped, "LS 6649" on East Side of 10"Oak

Line Not Surveyed Created Per (12 RM 80)

Lands of City of Belvedere (2752 O.R. 540)

Lands of City of Belvedere (2752 O.R. 540)

Basis of Bearings N 04°32'10" E, Between found Monuments as shown on "Map of Re-subdivision of part of The City of Belvedere Marin County California" Recorded at Page 68, Book 5 of Record Maps M.C.R.

Lands of Goldfisher

(Portion of Lot 2, Block A, 5 RM 68-7)

Belvedere Marin County California
Scale: 1" = 40' August 2000

L.A. Stevens & Associates, Inc.

Professional Land Surveyors * (415) 382-7713
7 Commercial Blvd., Suite 1 * Novato, CA 94949

Job # 00-447

Page 2 Of 2



Lawrence A. Stevens, PLS 6649
my license expires 12/31/03