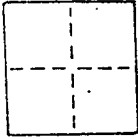


CORNER RECORD

COUNTY OF _____ T. _____ R. _____ MERIDIAN CALIFORNIA
 CORNER TYPE: GOV'T. CORNER MEANDER RANCHO CONTROL OTHER
 CORNER IDENTIFICATION — DATE OF VISIT June 19 89

AP 60-141-10
60-141-10



Monument per 5 R.M. 68, sheet 7
 Near #19 & #35 Belvedere Ave., City of Belvedere

CORNER — LEFT AS FOUND FOUND AND TAGGED REESTABLISHED OBLITERATED CORNER REBUILT

PHYSICAL DESCRIPTION OF CORNER FOUND; EVIDENCE AND METHOD USED TO IDENTIFY OR REESTABLISH

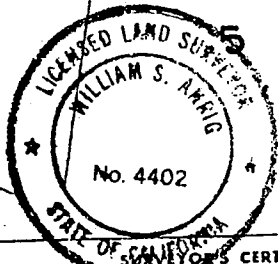
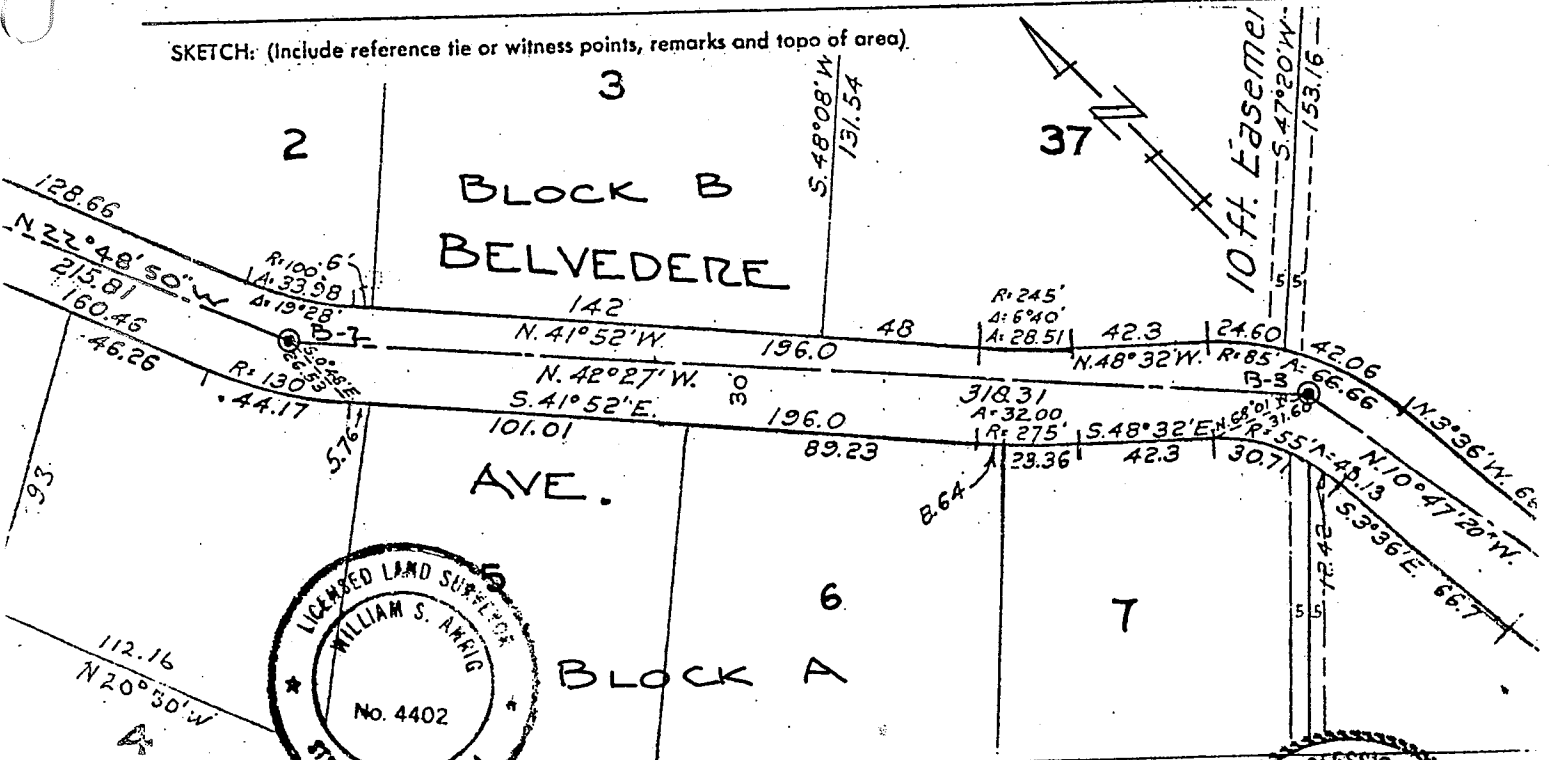
Found railroad spike
 Original position perpetuated, distances not verified
 Offset during repaving

PHYSICAL DESCRIPTION OF MONUMENTS. REBUILT OR PERPETUATED

Standard cast iron street monument

CALIFORNIA COORDINATE SYSTEM ORDER: FIRST SECOND THIRD
 STATIONS USED: NGS (USC & GS) STATE COUNTY OTHER STATION _____ STATION _____
 ZONE _____ ELEVATION _____ NORTHINGS (Y) _____ EASTINGS (X) _____

SKETCH: (Include reference tie or witness points, remarks and topo of area)



THIS CORNER RECORD WAS PREPARED BY ME OR UNDER MY DIRECTION IN CONFORMANCE WITH THE LAND SURVEYORS ACT ON NOVEMBER 1 1989

SIGNED: William S. Arwig
 L.S. or R.C.E. No. L.S. 4402 Exp 9-30-93

SEAL

COUNTY SURVEYOR'S PROFESSIONAL ENGINEER
 THE CORNER RECORD WAS RECEIVED BY _____ AND EXAMINED AND FILED _____ 19 _____
 BY: _____ C 30212
 TITLE: _____ Exp 3-31-92
 DOCUMENT No. _____
 STATEMENT ON BACK OF SHEET

