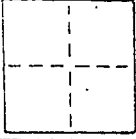


CORNER RECORD

COUNTY OF _____ T. _____ R. _____ MERIDIAN CALIFORNIA

CORNER TYPE: GOVT. CORNER MEANDER RANCHO CONTROL OTHER

CORNER IDENTIFICATION - DATE OF VISIT June 19 89



Monument per map 9 R.M. 71

Near #'s 6 & 10 Britton Road, City of Belvedere

AP 60-121-12 + 60-121-10

CORNER - LEFT AS FOUND FOUND AND TAGGED REESTABLISHED OBLITERATED CORNER REBUILT

PHYSICAL DESCRIPTION OF CORNER FOUND; EVIDENCE AND METHOD USED TO IDENTIFY OR REESTABLISH

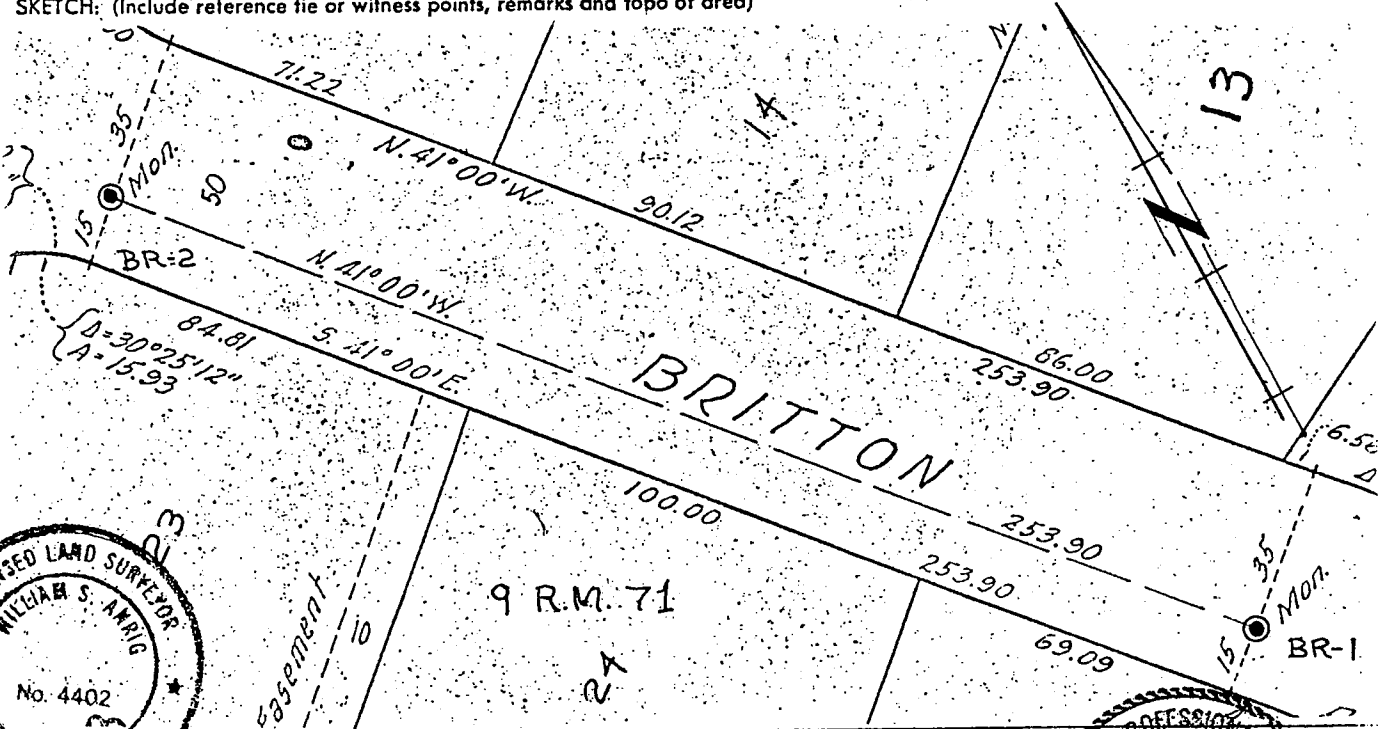
Found 3/4" Pipe with pin in concrete plug.
Original position perpetuated, distances not verified
Set stradlers after repaving

PHYSICAL DESCRIPTION OF MONUMENTS, REBUILT OR PERPETUATED

Standard cast iron street monument

CALIFORNIA COORDINATE SYSTEM ORDER: FIRST SECOND THIRD
STATIONS USED: NGS (USC & GS) STATE COUNTY OTHER STATION _____ STATION _____
ZONE _____ ELEVATION _____ NORTHINGS (Y) _____ EASTINGS (X) _____

SKETCH: (Include reference tie or witness points, remarks and topo of area)



SURVEYOR'S CERTIFICATE

THIS CORNER RECORD WAS PREPARED BY ME OR UNDER MY DIRECTION IN CONFORMANCE WITH THE LAND SURVEYORS ACT ON NOVEMBER 1 19 90

SIGNED: William S. Arvig

L.S. or R.C.E. No.: L.S. 4402

SEAL

COUNTY SURVEYOR'S CERTIFICATE

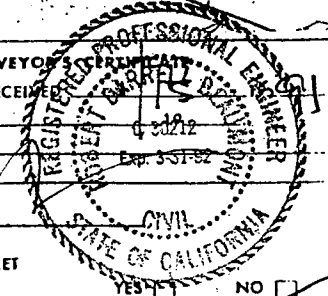
THE CORNER RECORD WAS RECEIVED AND EXAMINED AND FILED

BY: _____

TITLE: _____

DOCUMENT No. _____

STATEMENT ON BACK OF SHEET



YES NO