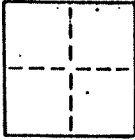


### CORNER RECORD

COUNTY OF Marin T. \_\_\_\_\_ R. \_\_\_\_\_ MERIDIAN \_\_\_\_\_ CALIFORNIA

CORNER TYPE: GOVT. CORNER  MEANDER  RANCHO  CONTROL  OTHER

CORNER IDENTIFICATION — DATE OF VISIT \_\_\_\_\_ 19\_\_\_\_



CORNER — LEFT AS FOUND  FOUND AND TAGGED  REESTABLISHED OBLITERATED CORNER  REBUILT

PHYSICAL DESCRIPTION OF CORNER FOUND, EVIDENCE AND METHOD USED TO IDENTIFY OR REESTABLISH

Found R.R. spike monuments on Bay View Avenue as shown on the Map of Resubdivision of Block G & Portion of Blocks F, H & 11 of Map of Resubdivision of Part of the City of Belvedere, Marin County, California. (7 Maps 83)

PHYSICAL DESCRIPTION OF MONUMENTS, REBUILT OR PERPETUATED

Reset 3/4 inch iron pipe, tag RCE 17846, as shown.

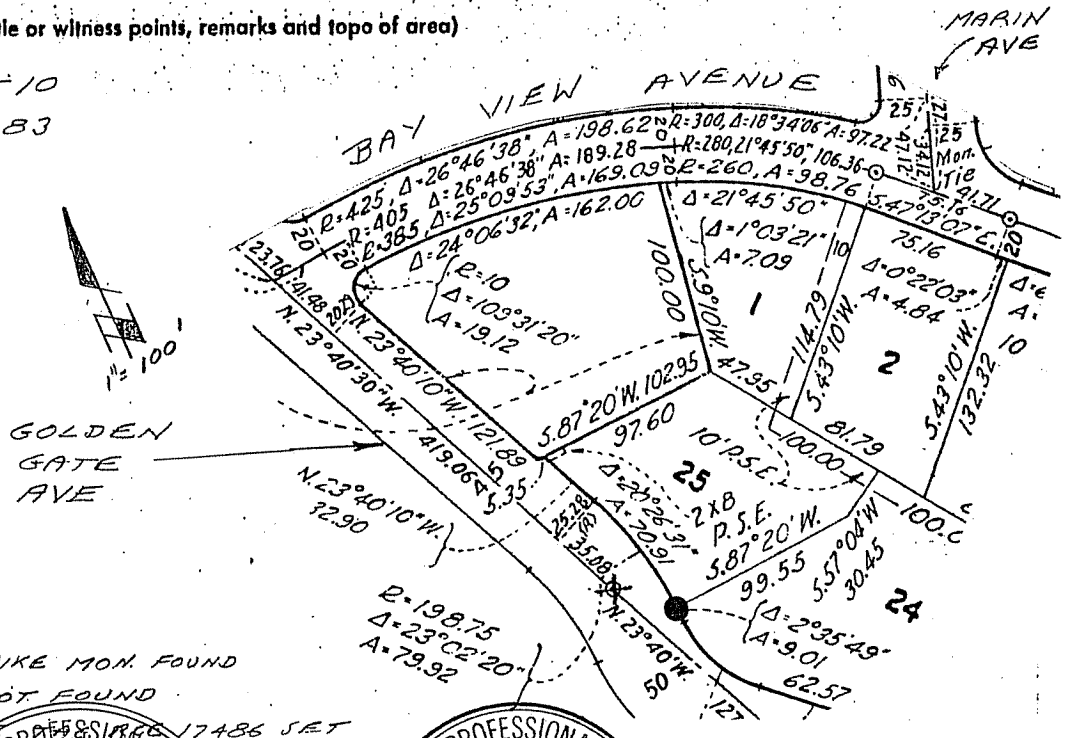
CALIFORNIA COORDINATE SYSTEM ORDER: FIRST  SECOND  THIRD

STATIONS USED: NGS (USC & GS)  STATE  COUNTY  OTHER  STATION \_\_\_\_\_ STATION \_\_\_\_\_

ZONE \_\_\_\_\_ ELEVATION \_\_\_\_\_ NORTHINGS (Y) \_\_\_\_\_ EASTINGS (X) \_\_\_\_\_

SKETCH: (Include reference tie or witness points, remarks and topo of area)

A.P. 60-114-10  
LOT 12, 7 M 83

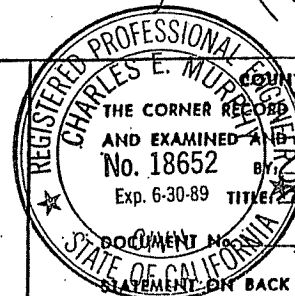
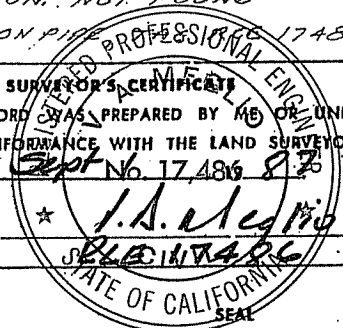


NOTES

- INDICATES R.R. SPIKE MON. FOUND
- ⊗ " " MON. NOT FOUND
- " 3/4" IRON PIPE TAG RCE 17846 SET

SURVEYOR'S CERTIFICATE  
THIS CORNER RECORD WAS PREPARED BY ME OR UNDER MY DIRECTION IN CONFORMANCE WITH THE LAND SURVEYORS ACT ON \_\_\_\_\_

SIGNED: I.S. McGinnis  
L.S. or R.C.E. No.: 17486



COUNTY SURVEYOR'S CERTIFICATE  
THE CORNER RECORD WAS RECEIVED Sept. 3, 1987  
AND EXAMINED AND FILED Sept 8, 1987  
No. 18652 BY Charles E. Murphy  
Exp. 6-30-89 TITLE Marin County Surveyor

DOCUMENT NO. \_\_\_\_\_  
STATEMENT ON BACK OF SHEET

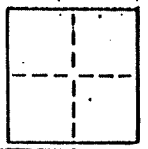
2 of 3

# CORNER RECORD

COUNTY OF Marin T. \_\_\_\_\_ R. \_\_\_\_\_ MERIDIAN CALIFORNIA

CORNER TYPE: GOVT. CORNER  MEANDER  RANCHO  CONTROL  OTHER

CORNER IDENTIFICATION — DATE OF VISIT \_\_\_\_\_ 19\_\_\_\_



CORNER — LEFT AS FOUND  FOUND AND TAGGED  REESTABLISHED OBLITERATED CORNER  REBUILT

PHYSICAL DESCRIPTION OF CORNER FOUND, EVIDENCE AND METHOD USED TO IDENTIFY OR REESTABLISH

Found R.R. spike monuments on Bay View Avenue as shown on the Map of Resubdivision of Block G & Portion of Blocks F, H & 11 of Map of Resubdivision of Part of the City of Belvedere, Marin County, California (7 Maps 83)

PHYSICAL DESCRIPTION OF MONUMENTS, REBUILT OR PERPETUATED

Reset 3/4 inch iron pipe, tag RCE 17846, as shown.

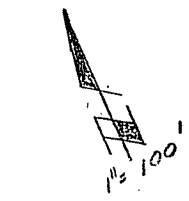
CALIFORNIA COORDINATE SYSTEM ORDER: FIRST  SECOND  THIRD

STATIONS USED: NGS (USC & GS)  STATE  COUNTY  OTHER  STATION \_\_\_\_\_ STATION \_\_\_\_\_

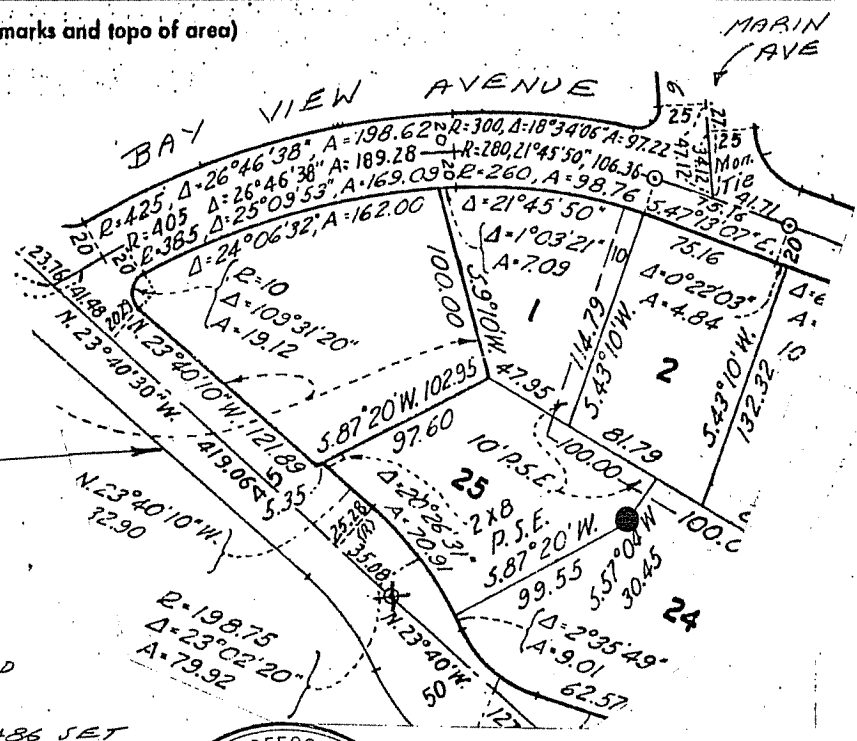
ZONE \_\_\_\_\_ ELEVATION \_\_\_\_\_ NORTHINGS (Y) \_\_\_\_\_ EASTINGS (X) \_\_\_\_\_

SKETCH: (Include reference tie or witness points, remarks and topo of area)

A.P. 60-114-10  
LOT 12, 7 M 83



GOLDEN GATE AVE



- NOTES
- INDICATES R.R. SPIKE MON. FOUND
  - ⊗ " " MON. NOT FOUND
  - " 3/4" IRON PIPE MON. RCE 17846 SET

REGISTERED PROFESSIONAL SURVEYOR'S CERTIFICATE

THIS CORNER RECORD WAS PREPARED BY ME OR UNDER MY DIRECTION IN CONFORMANCE WITH THE LAND SURVEYORS ACT ON \_\_\_\_\_

SIGNED: V.A. M... RCE 17846

L.S. or R.C.E. No. \_\_\_\_\_

REGISTERED PROFESSIONAL SURVEYOR'S CERTIFICATE

THE CORNER RECORD WAS RECEIVED Sept. 3 1987 AND EXAMINED Sept. 8 1987

No. 18652 Exp. 6-30-89

TITLE: Acting County Surveyor

DOCUMENT NO. \_\_\_\_\_

STATE OF CALIFORNIA

ATTENTION ON BACK OF SHEET YES  NO

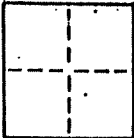
3 of 3

# CORNER RECORD

COUNTY OF Marin T. \_\_\_\_\_ R. \_\_\_\_\_ MERIDIAN \_\_\_\_\_ CALIFORNIA

CORNER TYPE: GOVT. CORNER  MEANDER  RANCHO  CONTROL  OTHER

CORNER IDENTIFICATION — DATE OF VISIT \_\_\_\_\_ 19\_\_



CORNER — LEFT AS FOUND  FOUND AND TAGGED  REESTABLISHED OBLITERATED CORNER  REBUILT

### PHYSICAL DESCRIPTION OF CORNER FOUND, EVIDENCE AND METHOD USED TO IDENTIFY OR REESTABLISH

Found R.R. spike monuments on Bay View Avenue as shown on the Map of Resubdivision of Block G & Portion of Blocks F, H & 11 of Map of Resubdivision of Part of the City of Belvedere, Marin County, California. (7 Maps 83)

### PHYSICAL DESCRIPTION OF MONUMENTS, REBUILT OR PERPETUATED

Reset 3/4 inch iron pipe, tag RCE 17846, as shown.

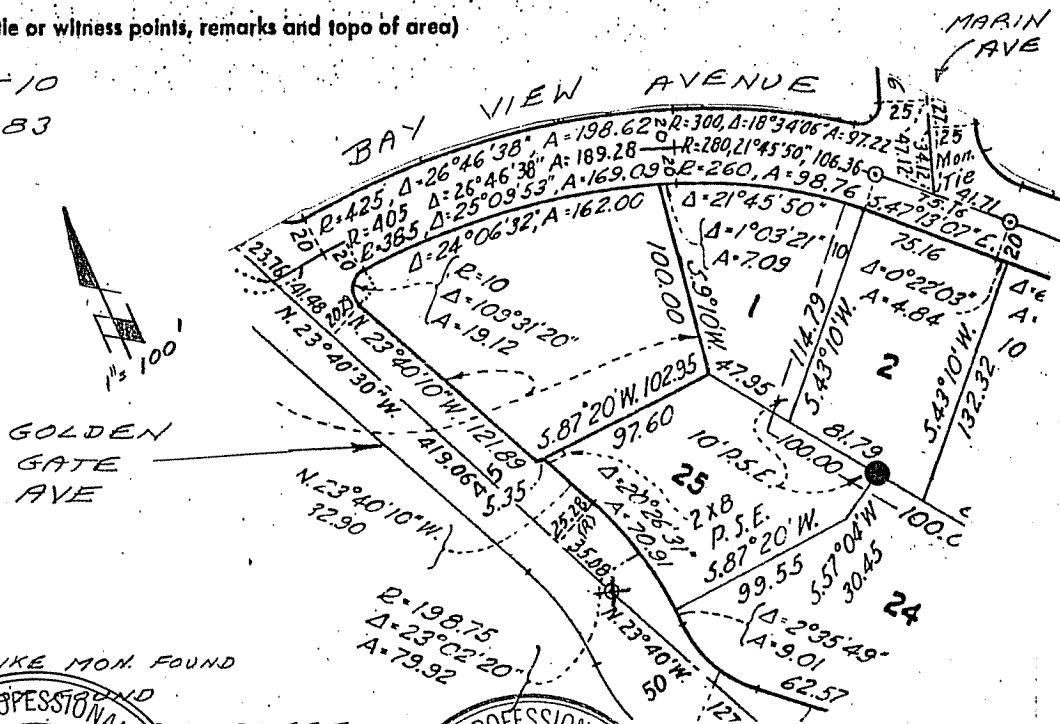
CALIFORNIA COORDINATE SYSTEM ORDER: FIRST  SECOND  THIRD

STATIONS USED: NGS (USC & GS)  STATE  COUNTY  OTHER  STATION \_\_\_\_\_ STATION \_\_\_\_\_

ZONE \_\_\_\_\_ ELEVATION \_\_\_\_\_ NORTHINGS (Y) \_\_\_\_\_ EASTINGS (X) \_\_\_\_\_

### SKETCH: (Include reference tie or witness points, remarks and topo of area)

A.P. 60-114-10  
LOT 12, 7 M 83



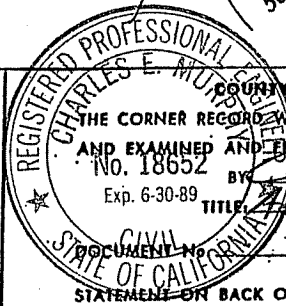
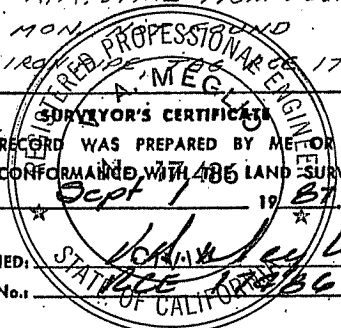
### NOTES

- INDICATES R.R. SPIKE MON. FOUND
- ⊗ " " MON. FOUND
- " 3/4" IRON PIPE TAG RCE 17846 SET

THIS CORNER RECORD WAS PREPARED BY ME OR UNDER MY DIRECTION IN CONFORMANCE WITH THE LAND SURVEYORS ACT ON \_\_\_\_\_

SIGNED: \_\_\_\_\_

L.S. or R.C.E. No. \_\_\_\_\_



### COUNTY SURVEYOR'S CERTIFICATE

THE CORNER RECORD WAS RECEIVED Sept. 3, 1987  
AND EXAMINED AND FILED Sept. 9, 1987  
NO. 18652 BY Charles E. Murphree  
Exp. 6-30-89 TITLE Marin County Surveyor

STATEMENT ON BACK OF SHEET

YES  NO