



Anrig Doyle

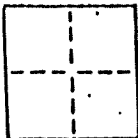
LICENSED LAND SURVEYORS CIVIL ENGINEERS  
165 Helens Lane Mill Valley CA 94041 (415) 388-0067

### CORNER RECORD

COUNTY OF \_\_\_\_\_ MERIDIAN CALIFORNIA

CORNER TYPE: GOVT. CORNER  MEANDER  RANCHO  CONTROL  OTHER

CORNER IDENTIFICATION - DATE OF VISIT August 20, 90



Monuments per 9 R.M. 71

AP 60-114-08

Near #22 Golden Gate Ave., City of Belvedere (2)

CORNER - LEFT AS FOUND  FOUND AND TAGGED  REESTABLISHED OBLITERATED CORNER  REBUILT

PHYSICAL DESCRIPTION OF CORNER FOUND; EVIDENCE AND METHOD USED TO IDENTIFY OR REESTABLISH

Found R.R. Spike

Found R.R. Spike

Original positions perpetuated, distances not verified

PHYSICAL DESCRIPTION OF MONUMENTS, REBUILT OR PERPETUATED

Standard cast iron monuments

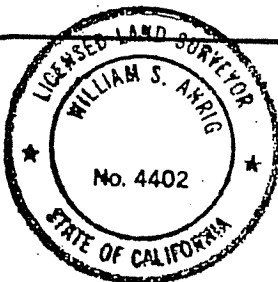
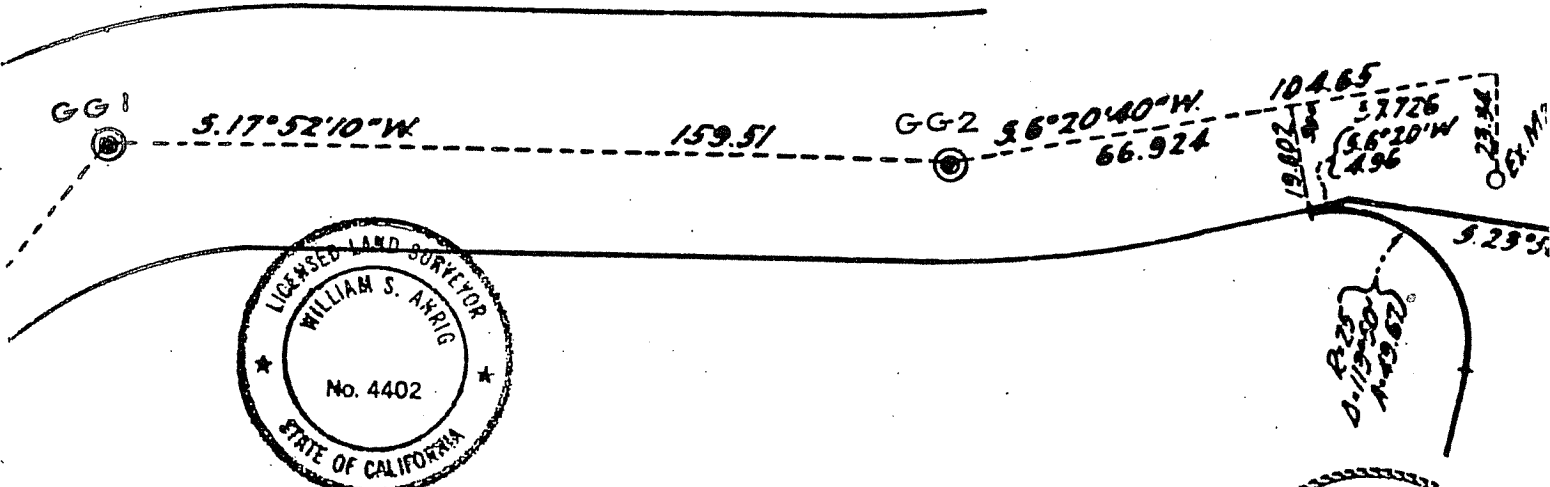
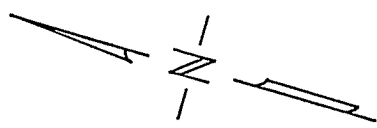
CALIFORNIA COORDINATE SYSTEM ORDER: FIRST  SECOND  THIRD

STATIONS USED: NGS (USC & OS)  STATE  COUNTY  OTHER  STATION \_\_\_\_\_ STATION \_\_\_\_\_

ZONE \_\_\_\_\_ ELEVATION \_\_\_\_\_ NORTHINGS (Y) \_\_\_\_\_ EASTINGS (X) \_\_\_\_\_

SKETCH: (Include reference to or witness points, remarks and topo of area)

#22 GOLDEN GATE AVE



**SURVEYOR'S CERTIFICATE**

THIS CORNER RECORD WAS PREPARED BY ME OR UNDER MY DIRECTION IN CONFORMANCE WITH THE LAND SURVEYORS ACT ON NOVEMBER 1 1990

SIGNED: William S. Anrig

L.S. or R.C.E. No. L.S. 4402 EXP 9-30-93

COUNTY SURVEYOR'S PROFESSIONAL ENGINEER

THE CORNER RECORD WAS RECORDED AND EXAMINED AND FILED

BY: \_\_\_\_\_ C 30212

TITLE: \_\_\_\_\_ Exp. 3-31-92

DOCUMENT No. \_\_\_\_\_

STATEMENT ON BACK OF SHEET

NO