

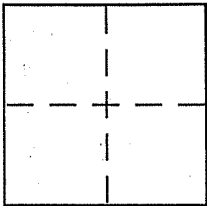
CORNER RECORD

Document Number 060-114-07

City of Belvedere

County of Marin, California

Brief Legal Description Lot 5, Block H, 7 R.M. 83



CORNER TYPE

Government Corner Control
Meander Property
Rancho Other
Date of Survey August 2006

COORDINATES (Optional)

N. _____
E. _____
Zone _____ NAD27 NAD83
NAD83 Epoch _____
Elev. _____
Vert. Datum: NGVD29 NAVD88
Meas. Units: Metric Imperial

Corner - Left as found Found and tagged Established Reestablished Rebuilt

Identification and type of corner found: Evidence used to identify or procedure used to establish or reestablish the corner:

See page 2 of 3 and 3 of 3

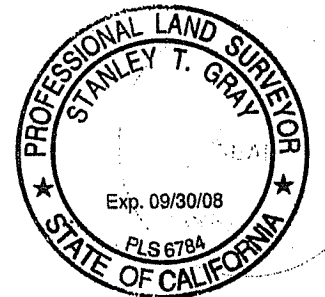
A description of the physical condition of the monument as found and as set or reset:

See page 2 of 3 and 3 of 3

SURVEYOR'S STATEMENT

This Corner Record was prepared by me or under my direction in conformance with the Land Surveyor's Act on DECEMBER 21 2006

Signed [Signature] P.L.S or R.C.E. No. 6784



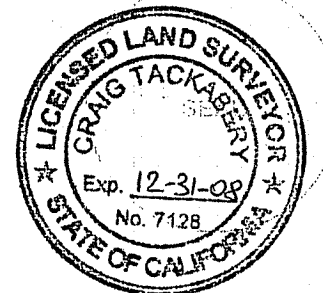
COUNTY SURVEYOR'S STATEMENT

This Corner Record was received JANUARY 5, 2007

and examined and filed JANUARY 10, 2007

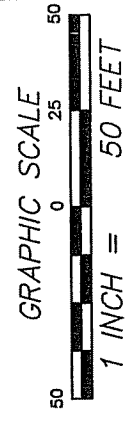
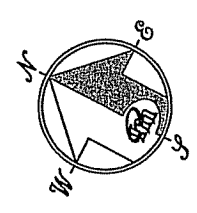
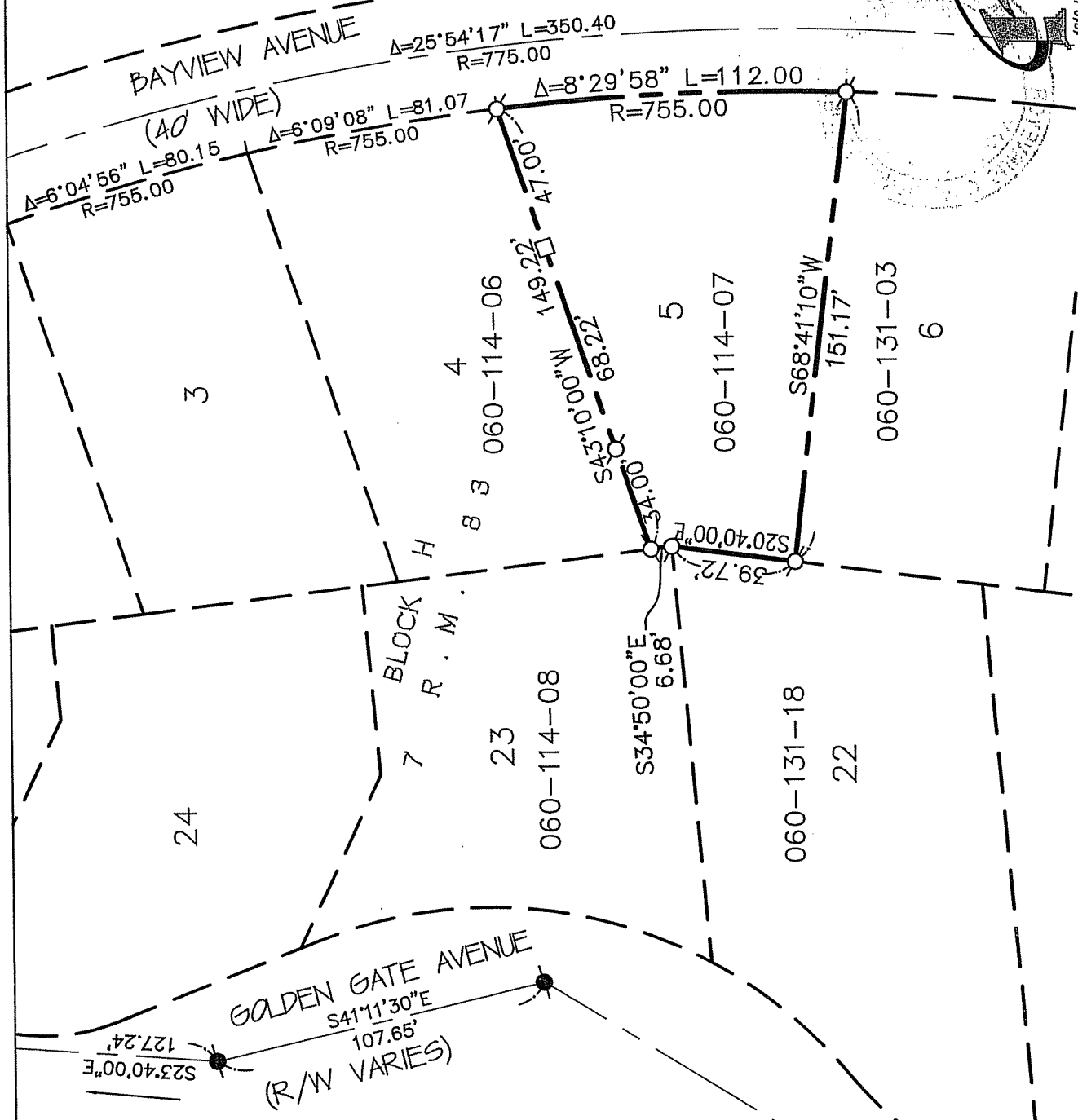
Signed [Signature] P.L.S or R.C.E. No. 7128

Title COUNTY SURVEYOR



County Surveyor's Comment _____

MATCH LINE - SEE SHEET 3 OF 3



REFERENCE

"MAP OF RESUBDIVISION OF BLOCK G..., CITY OF BELVEDERE, CALIFORNIA" FILED FOR RECORD APRIL 9, 1953 IN VOLUME 7 OF MAPS, AT PAGE 83, MARIN COUNTY RECORDS.

LEGEND

- FOUND CITY MONUMENT
- SET 5/8" REBAR WITH CAP, PLS 6784
- SET 2x2 HUB & TACK WITH BRASS TAG, PLS 6784

NOTE
RECORD=MEASURED

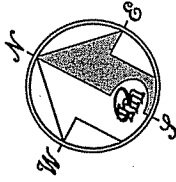
SHEET 2 OF 3

CORNER RECORD



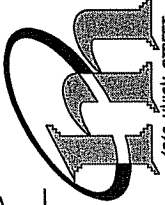
MERIDIAN SURVEYING
ENGINEERING, INC.

1812 UNION STREET
SAN FRANCISCO, CA 94123
(415) 440-4131
info@meridiansurveying.com
06112
777 GRAND AVENUE, SUITE 202
SAN RAFAEL, CA 94901
(415) 466-8450



SHEET 3 OF 3

CORNER RECORD



MERIDIAN SURVEYING, INC.
ENGINEERING, INC.
777 GRAND AVENUE, SUITE 202
SAN RAFAEL, CA 94901
(415) 466-6460

1812 UNION STREET
SAN FRANCISCO, CA 94123
(415) 440-4131
info@meridiansurvey.com

S84°14'25"W
131.03'

$\Delta=26^{\circ}46'38''$ L=189.28
R=405.00

BAYVIEW AVENUE
(40' WIDE)

$\Delta=21^{\circ}45'50''$ L=106.36
R=280.00

(R/W VARIES)

GOLDEN GATE AVENUE

S23°40'30"E
233.27'

25
BLOCK
7
R. M.

2

8

3

Δ=0°22'03" L=4.84
R=755.00

41.71'

N47°13'07"W

33.45'

N42°49'53"E
200.00'

MATCH LINE -- SEE SHEET 2 OF 3