

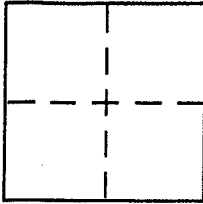
**CORNER RECORD**

Document Number APN 60-111-30

City of BELVEDERE

County of MARIN, California

Brief Legal Description LOT 14, BLOCK J, 9 RM 71



**CORNER TYPE**

Government Corner  Control   
Meander  Property   
Rancho  Other   
Date of Survey 1/19/05

**COORDINATES (Optional)**

N. \_\_\_\_\_  
E. \_\_\_\_\_  
Zone \_\_\_\_\_ NAD27  NAD83   
NAD83 Epoch \_\_\_\_\_  
Elev. \_\_\_\_\_  
Vert. Datum: NGVD29  NAVD88   
Meas. Units: Metric  Imperial

Corner - Left as found  Found and tagged  Established  Reestablished  Rebuilt

Identification and type of corner found: Evidence used to identify or procedure used to establish or reestablish the corner:

FND STD. STREET MONUMENTS AS SHOWN ON 9 RM 71  
AND ON REVERSE.

A description of the physical condition of the monument as found and as set or reset: SET 3/4" IRON

PIPES TAGGED P.L.S. 5296 AS SHOWN ON REVERSE.

**SURVEYOR'S STATEMENT**

This Corner Record was prepared by me or under my direction in conformance with the Land Surveyor's Act on JANUARY 23, 2005

Signed [Signature] P.L.S or R.C.E. No. PLS 5296



**COUNTY SURVEYOR'S STATEMENT**

This Corner Record was received FEBRUARY 1, 2005

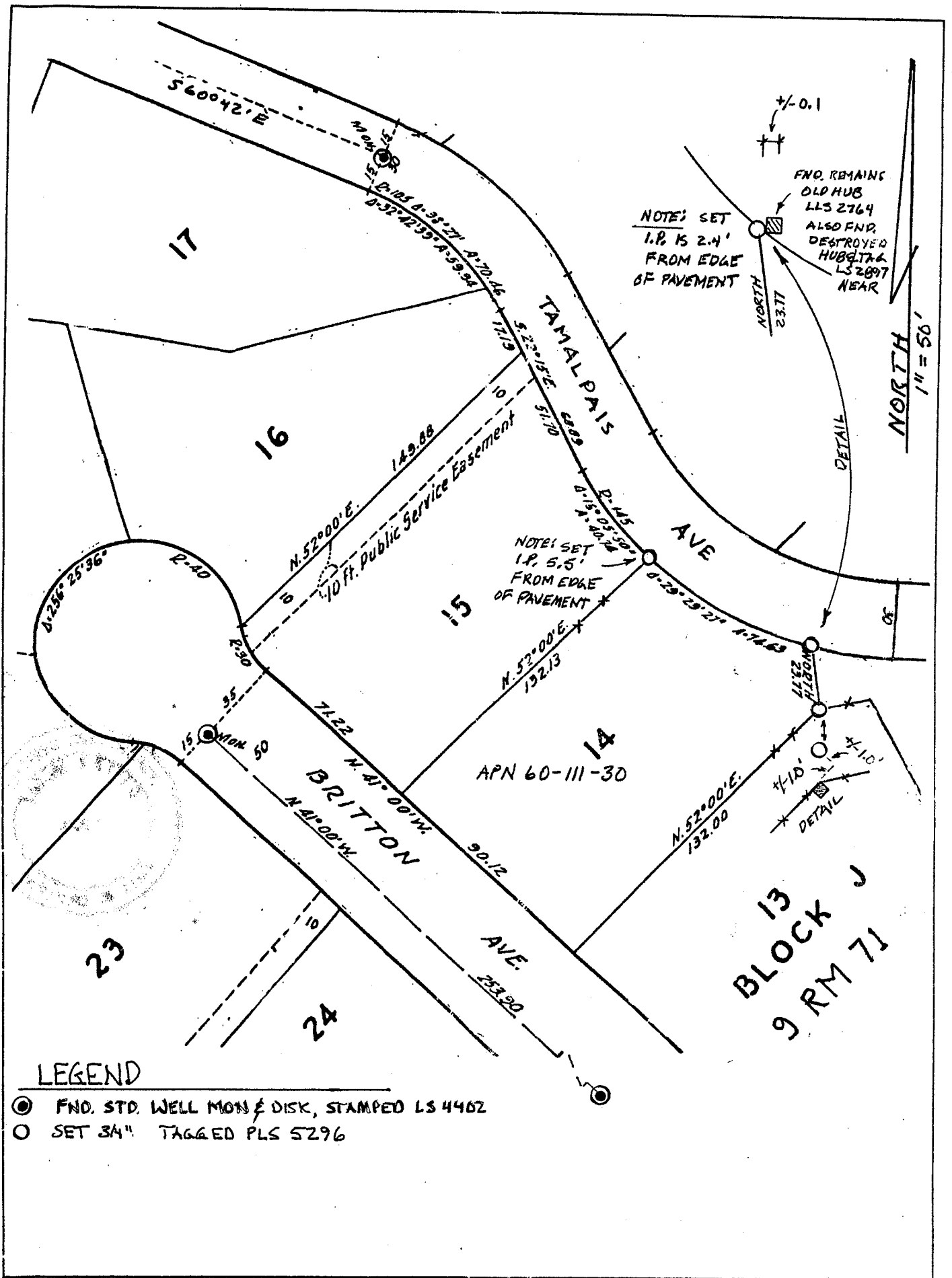
and examined and filed MARCH 15, 2005

Signed [Signature] P.L.S or R.C.E. No. 7128

Title COUNTY SURVEYOR



County Surveyor's Comment \_\_\_\_\_



**LEGEND**

- FND. STD. WELL MON & DISK, STAMPED LS 4462
- SET 34" TAGGED PLS 5296