

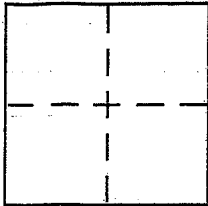
CORNER RECORD

Document Number APN 060-111-27

City of BELVEDERE

County of MARIN, California

Brief Legal Description LOT 17, BLOCK L, 9 RM 71



CORNER TYPE

Government Corner Control
Meander Property
Rancho Other
Date of Survey 9-23-05

COORDINATES (Optional)

N. _____
E. _____
Zone _____ NAD27 NAD83
NAD83 Epoch _____
Elev. _____
Vert. Datum: NGVD29 NAVD88
Meas. Units: Metric Imperial

Corner - Left as found Found and tagged Established Reestablished Rebuilt

Identification and type of corner found: Evidence used to identify or procedure used to establish or reestablish the corner:

FND. NAIL & TAG PLS 7053 IN A.C. PAVEMENT AND FND. REBAR
AND TAG PLS 7053 AS SHOWN ON 1998 MAPS 168 AND
ON REVERSE.

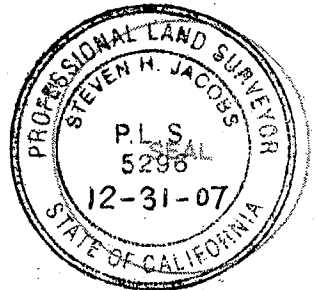
A description of the physical condition of the monument as found and as set or reset: SET PK NAIL AND

TAG PLS 5296 LINEPOINT AS SHOWN ON REVERSE.

SURVEYOR'S STATEMENT

This Corner Record was prepared by me or under my direction in conformance with the Land Surveyor's Act on NOVEMBER 7, 2005

Signed [Signature] P.L.S. or R.C.E. No. PLS 5296



COUNTY SURVEYOR'S STATEMENT

This Corner Record was received DECEMBER 6, 2005

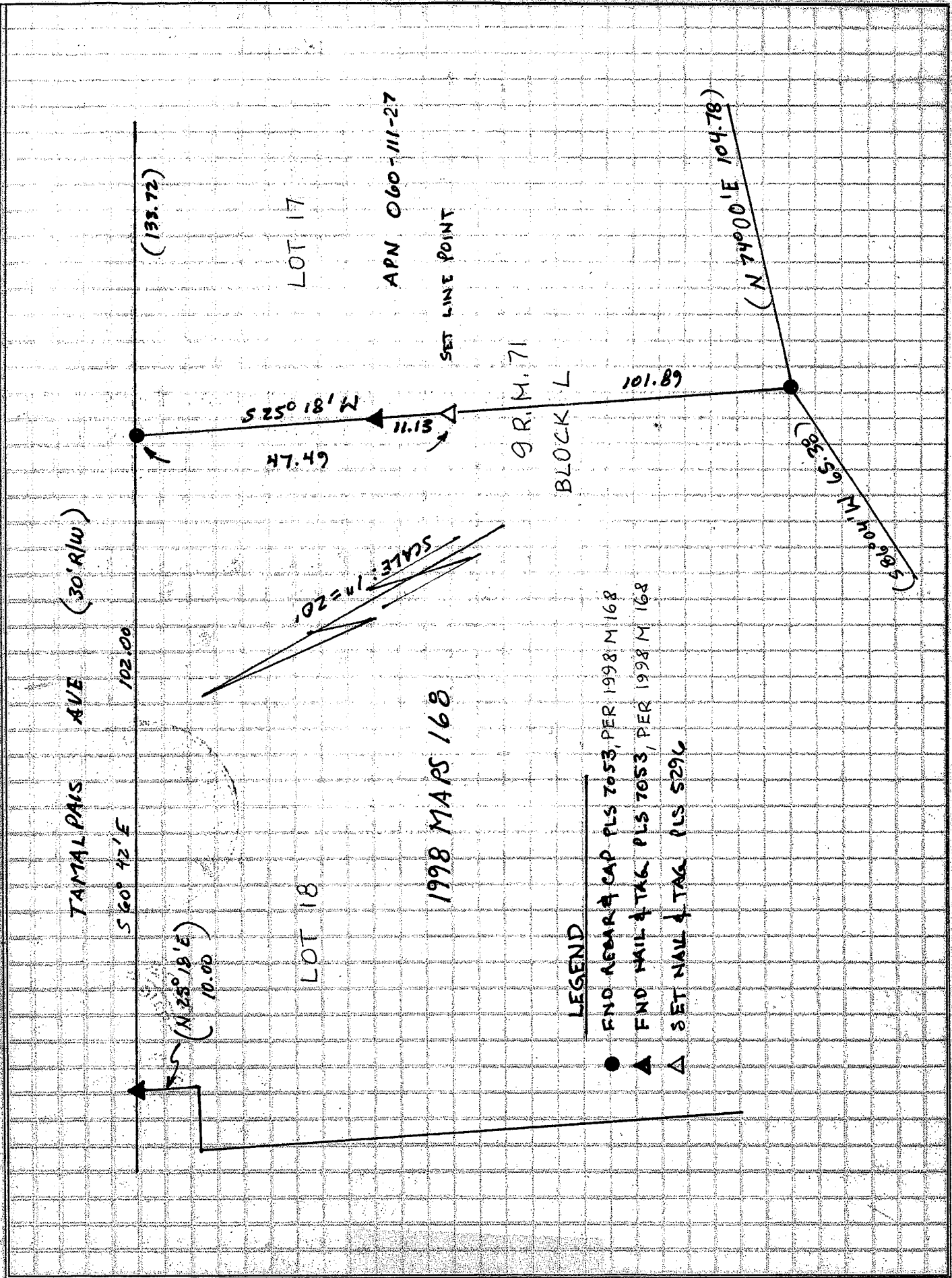
and examined and filed JANUARY 6, 2006

Signed [Signature] P.L.S. or R.C.E. No. 7128

Title COUNTY SURVEYOR



County Surveyor's Comment _____



TAMALPAIS AVE (30' R/W)

560' 42' E

102.00

(133.72)

LOT 17

APN 060-111-27

SET LINE POINT

S 25° 18' W
11.13
47.49

9 R. M. 71

BLOCK L

101.89

(N 74° 00' E 104.78)

(S 84° 10' W 140.28)

SCALE 1" = 20'

LOT 18

1998 MAPS 168

LEGEND

- FND NEAR CAP PLS 7053, PER 1998 M 168
- ▲ FND NAIL & TAG PLS 7053, PER 1998 M 168
- △ SET NAIL & TAG PLS 5296