

CORNER RECORD

Agency Index 20-060

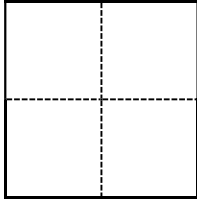
Document Number APN 060-104-83

City of BELVEDERE County of Marin, California

Brief Legal Description Lands of Griffith as shown on 2011 Maps 36, Marin County Records.

CORNER TYPE

COORDINATES (Optional)



- Government Corner
- Meander
- Rancho
- Control
- Property
- Other

Date of Survey August 4, 2020

N. _____ E. _____

Elevation _____

Units Metric U.S. Survey Foot

Horizontal Datum _____

Zone _____ Epoch Date _____

Vertical Datum _____

Complies with Public Resources Code §§8801-8819

Complies with Public Resources Code §§8890-8902

PLS Act Ref.: 8765(d) 8771 8773 Other:

Corner/Monument: Left as found Established Rebuilt Pre-Construction

Found and tagged Reestablished Referenced Post-Construction

Narrative of corner identified and monument as found, set, reset, replaced, or removed:

See sheet #2 for description(s):

Found monumentation as shown 2011 Maps, Page 36, Marin County Records. Set 5/8" rebar tagged LS 4483, as shown on sheet 2.

SURVEYOR'S STATEMENT

This Corner Record was prepared by me or under my direction in conformance with the Professional Land Surveyors' Act on August 20, 2020.

Signed Fred M Phelps P.L.S. or R.C.E. No. LS 4483



COUNTY SURVEYOR'S STATEMENT

This Corner Record was received September 10, 2020

and examined and filed January 07, 2022

Signed T.W. Park P.L.S. No. 8176

Title County Surveyor

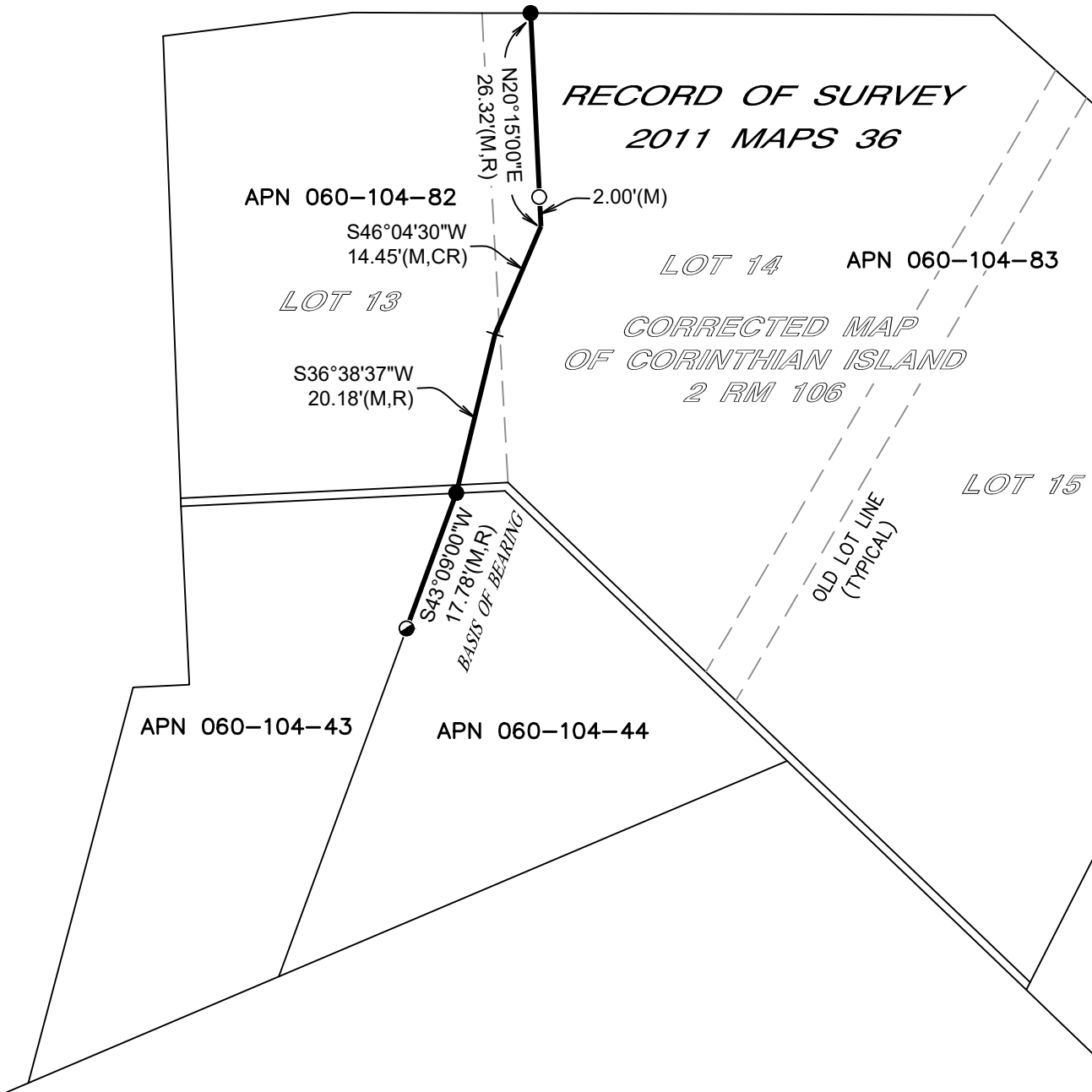
County Surveyor's Comment



BELLEVUE AVENUE

*RECORD OF SURVEY
2011 MAPS 36*

*LOT 14 APN 060-104-83
CORRECTED MAP
OF CORINTHIAN ISLAND
2 RM 106*



Legend

- = 5/8" rebar set (tagged LS 4483)
- = 3/4" iron pipe found (tagged LS 4694)
- ◐ = Nail & tag found (stamped LS 4694)
- R = Record of Survey 2011 Maps 36
- C = Calculated
- M = Measured

