

CORNER RECORD

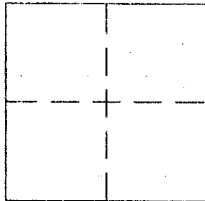
DPW# 17-013

Document Number 060-102-13

City of BELVEDERE

County of MARIN, California

Brief Legal Description LOT 32 AND PORTION OF LOT 33, "CORRECTED MAP OF CORINTIAN ISLAND" FILED JANUARY 7, 1908 IN BOOK 2 OF MAPS AT PAGE 106



CORNER TYPE

Government Corner Control
 Meander Property
 Rancho Other
 Date of Survey 12/22/2016

COORDINATES (Optional)

N. _____
 E. _____
 Zone _____ NAD27 NAD83
 NAD83 Epoch _____
 Elev. _____
 Vert. Datum: NGVD29 NAVD88
 Meas. Units: Metric Imperial

Corner - Left as found Found and tagged Established Reestablished Rebuilt

Identification and type of corner found: Evidence used to identify or procedure used to establish or reestablish the corner:
SEE PAGE 2

A description of the physical condition of the monument as found and as set or reset:
SEE PAGE 2

SURVEYOR'S STATEMENT

This Corner Record was prepared by me or under my direction in conformance with the Land Surveyor's Act on 3/30 2018

Signed [Signature] P.L.S. or R.C.E. No. 6784



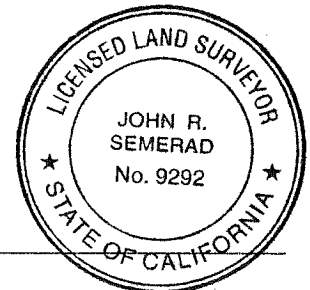
COUNTY SURVEYOR'S STATEMENT

This Corner Record was received February 13, 2017 and examined and filed MAY 11, 2018

Signed [Signature] P.L.S. or R.C.E. No. 9292

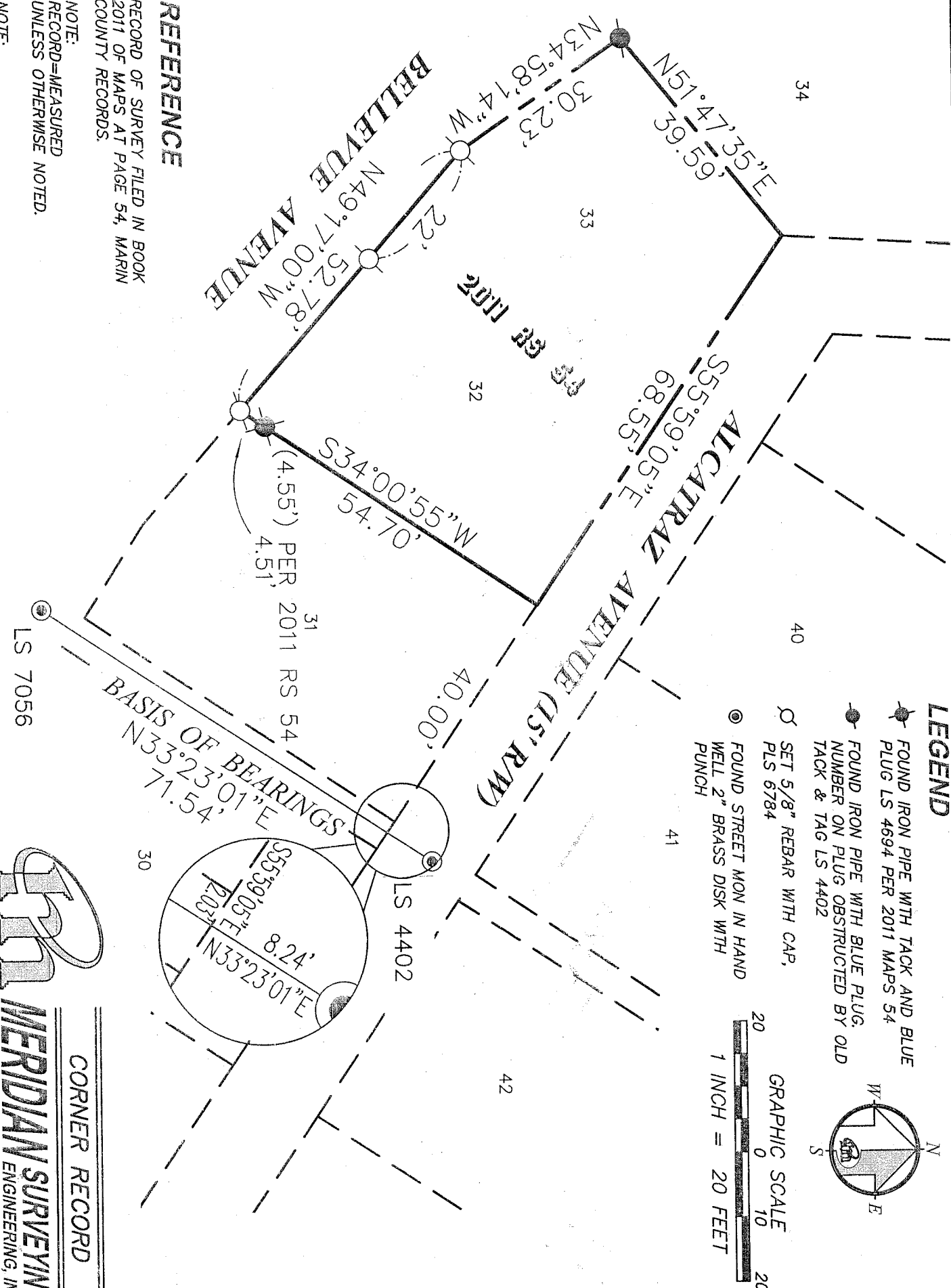
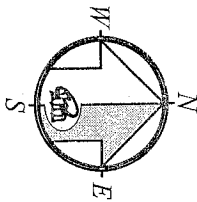
Title DEPUTY C.S.

County Surveyor's Comment _____



LEGEND

- FOUND IRON PIPE WITH TACK AND BLUE PLUG LS 4694 PER 2011 MAPS 54
- FOUND IRON PIPE WITH BLUE PLUG, NUMBER ON PLUG OBSTRUCTED BY OLD TACK & TAG LS 4402
- SET 5/8" REBAR WITH CAP, PLS 6784
- ⊙ FOUND STREET MON IN HAND WELL 2" BRASS DISK WITH PUNCH



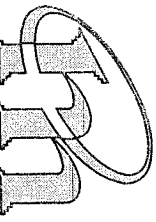
REFERENCE

RECORD OF SURVEY FILED IN BOOK 2011 OF MAPS AT PAGE 54, MARIN COUNTY RECORDS.

NOTE: RECORD=MEASURED UNLESS OTHERWISE NOTED.

NOTE: EASEMENTS NOT SHOWN

CORNER RECORD



MERIDIAN SURVEYING
ENGINEERING, INC.

2958 VAN NESS AVENUE (415) 440-4131
SAN FRANCISCO, CA 94109
777 GRAND AVENUE, #202 (415) 456-5450
SAN RAFAEL, CA 94901
surveyrequest@meridiansurvey.com