

Anrig-Doyle

060-09

LICENSED LAND SURVEYORS CIVIL ENGINEERS
165 Highland Lane Mil Valley CA 94041 (415) 388-0067

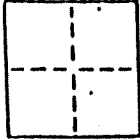


CORNER RECORD

COUNTY OF _____ T. _____ R. _____ MERIDIAN _____ CALIFORNIA.

CORNER TYPE: GOVT. CORNER MEANDER RANCHO CONTROL OTHER

CORNER IDENTIFICATION - DATE OF VISIT August 20 1990



Monument per 10 P.M. 6
Intersection of Beach Rd. and San Rafael Ave.

AP PK 60 Pg 09

CORNER - LEFT AS FOUND FOUND AND TAGGED REESTABLISHED OBLITERATED CORNER REBUILT

PHYSICAL DESCRIPTION OF CORNER FOUND; EVIDENCE AND METHOD USED TO IDENTIFY OR REESTABLISH

Found concrete nail
Original position perpetuated, distances not verified

PHYSICAL DESCRIPTION OF MONUMENTS, REBUILT OR PERPETUATED

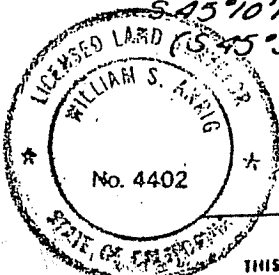
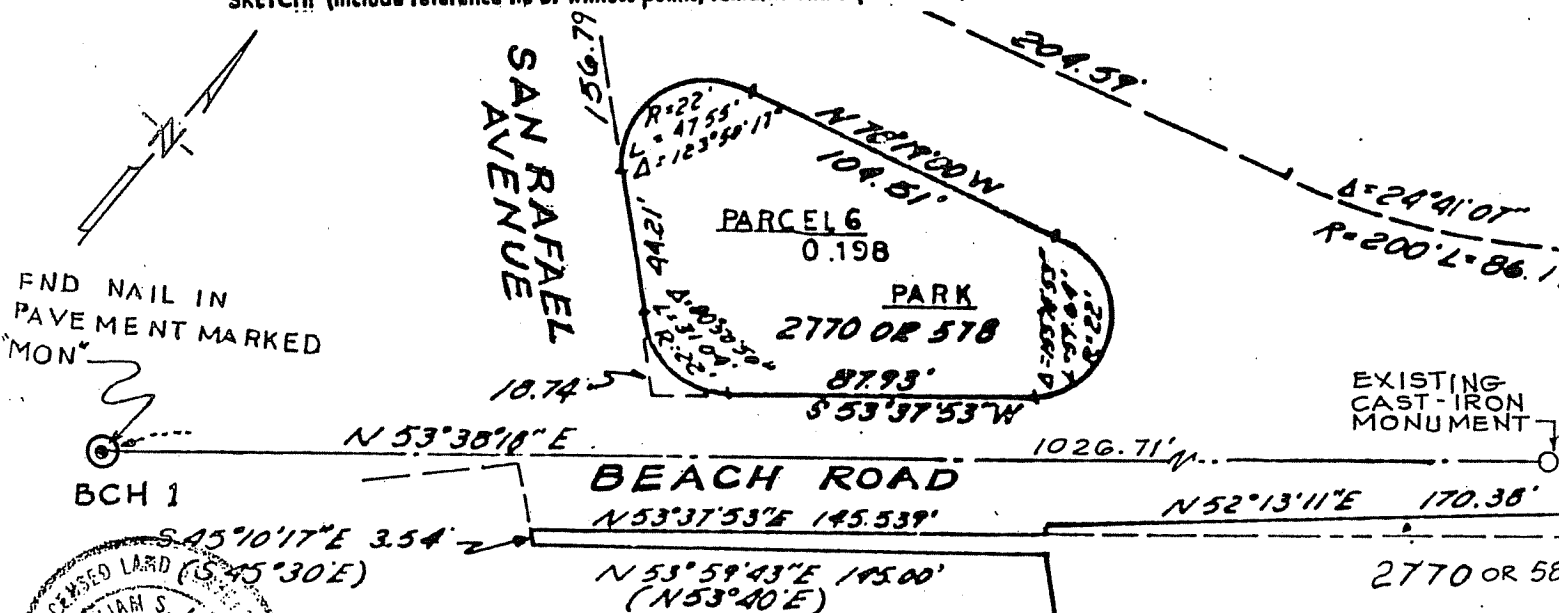
Standard cast iron street monument

CALIFORNIA COORDINATE SYSTEM ORDER: FIRST SECOND THIRD

STATIONS USED: NGS (USC & GS) STATE COUNTY OTHER STATION _____

ZONE _____ ELEVATION _____ NORTHINGS (Y) _____ EASTINGS (X) _____

SKETCH: (Include reference line or witness points, remarks and topo of area)



SURVEYOR'S CERTIFICATE
THIS CORNER RECORD WAS PREPARED BY ME OR UNDER MY DIRECTION IN CONFORMANCE WITH THE LAND SURVEYORS ACT ON NOVEMBER 1 1990
SIGNED: William S. Anrig
L.S. or R.C.E. No. L.S. 4402 EXP 9-30-93

COUNTY SURVEYOR _____
THE CORNER RECORD WAS RECEIVED AND EXAMINED AND FILED _____
BY: _____
TITLE: _____
DOCUMENT No. _____
STATEMENT ON BACK OF SHEET _____

