

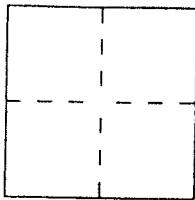
# CORNER RECORD

Document Number 60-081-12

City of Belvedere

County of Marin, California

Brief Legal Description Marin Assessor's Parcel 60-081-12



### CORNER TYPE

Government Corner  Control   
Meander  Property   
Rancho  Other   
Date of Survey \_\_\_\_\_

### COORDINATES (Optional)

N. \_\_\_\_\_  
E. \_\_\_\_\_  
Zone \_\_\_\_\_ Datum \_\_\_\_\_  
Elev. \_\_\_\_\_

Corner — Left as found  Found and tagged  Established  Reestablished  Rebuilt

Identification and type of corner found: Evidence used to identify or procedure used to establish or reestablish the corner:

Found monumentation per the Record of Survey as shown(over) 2000 M 119

A description of the physical condition of the monument as found and as set or reset: \_\_\_\_\_

Set Bar 5290 and set brass tag LS 5290  
(see plat-over)

### SURVEYOR'S STATEMENT

This Corner Record was prepared by me or under my direction in conformance with the Land Surveyors' Act on June 12<sup>th</sup> 2014

Signed David Harp L.S. or R.C.E. Number LS 5290



### COUNTY SURVEYOR'S STATEMENT

This Corner Record was received 7-15-14 and examined

and filed July 21, 2014

Signed Richard G. Simonitch Title DEPUTY

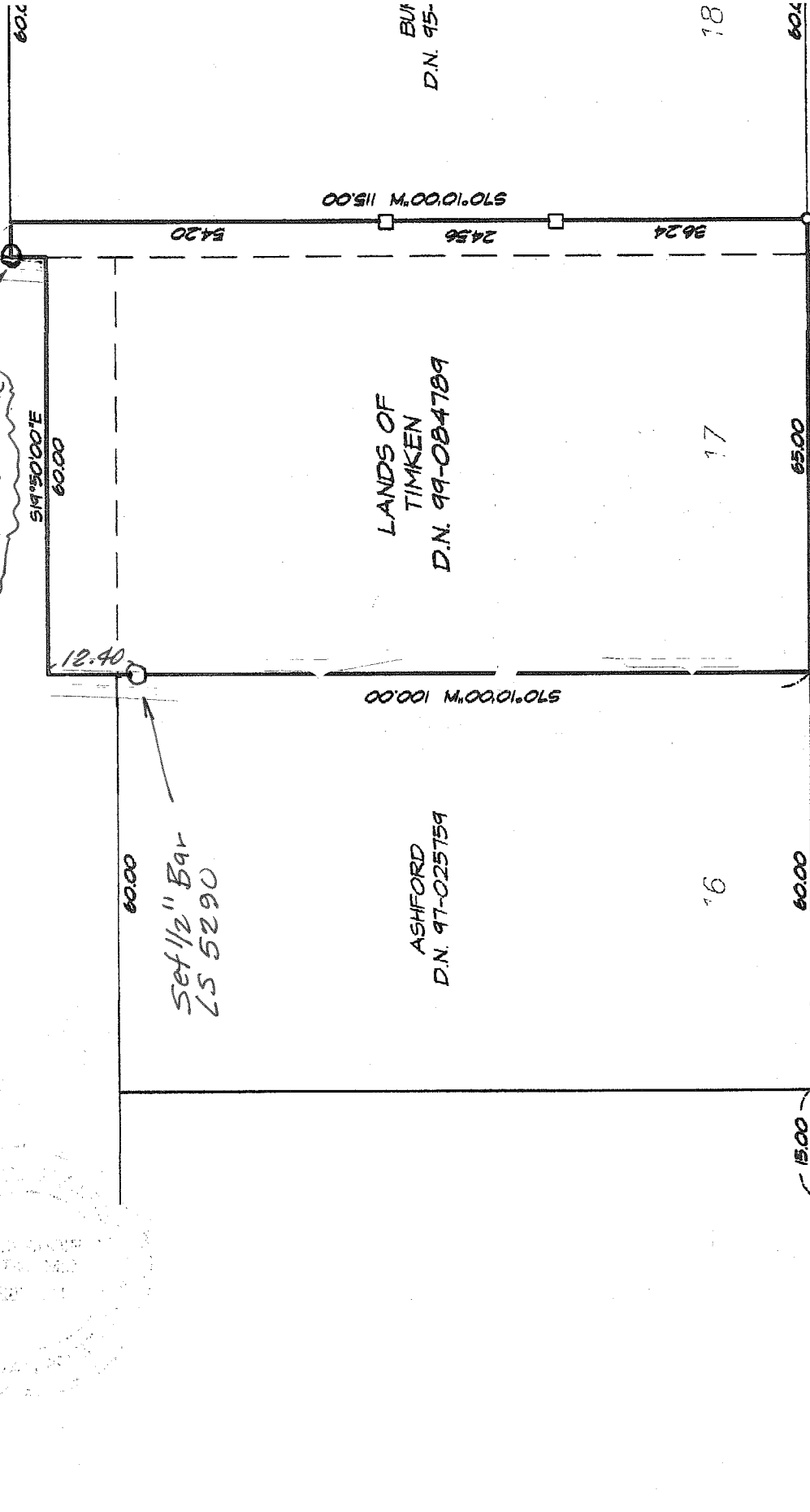


County Surveyor's Comment \_\_\_\_\_

BELVEDERE LAGOON

Set 1/4" x 1/8" Tag  
LS 5290 in  
Wood duck

SCALE 1" = 20'



Set 1/2" Bar  
LS 5290

ASHFORD  
D.N. 97-025759

LANDS OF  
TIMKEN  
D.N. 99-084789

BUI  
D.N. 95-

Found Mon

254.95  
(255.04 19-RM-67)

Set chiseled "x" in curb  
Fd Cross

Basis of Bearings

COVE ROAD