

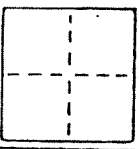
CORNER RECORD

1 of 3

COUNTY OF MARIN T        R        MERIDIAN        CALIFORNIA

CORNER TYPE: GOVT. CORNER  MEANDER  RANCHO  CONTROL  OTHER

CORNER IDENTIFICATION - DATE OF VISIT 6-24 1988



CORNER - LEFT AS FOUND  FOUND AND TAGGED  REESTABLISHED OBLITERATED CORNER  RESULT

PHYSICAL DESCRIPTION OF CORNER FOUND; EVIDENCE AND METHOD USED TO IDENTIFY OR REESTABLISH  
 CORNERS RESET PER FOUND MONUMENTS ON COVE & BEACH ROADS  
 SHOWN ON 7 RM 69, 2 OS 124, 12 OS 34, 9 PM 64, & 10 PM 6.

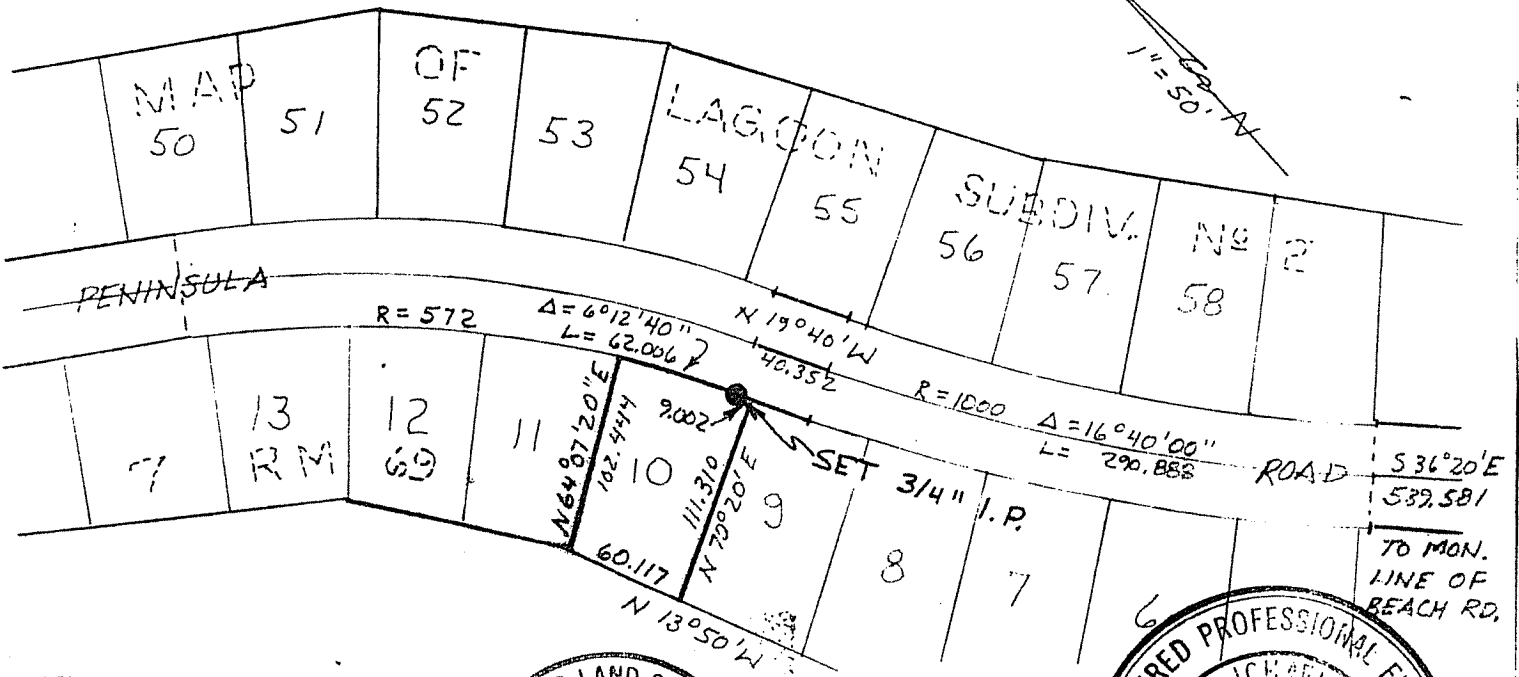
PHYSICAL DESCRIPTION OF MONUMENTS REBUILT OR PERPETUATED

SET 3/4" IRON PIPE  
 TAGGED L.S. 5296

AP # 60-072-06

CALIFORNIA COORDINATE SYSTEM ORDER: FIRST  SECOND  THIRD   
 STATIONS USED: NGS (USC & OS)  STATE  COUNTY  OTHER  STATION        STATION         
 ZONE        ELEVATION        NORTHINGS (7)        EASTINGS (X)       

SKETCH: (Include reference tie or witness points, remarks and topo of area)



SURVEYOR'S CERTIFICATE  
 THIS CORNER RECORD WAS PREPARED BY STEVEN H. JACOBS FOR UNDER  
 DIRECTION IN CONFORMANCE WITH THE LAND SURVEYORS ACT  
 ON JUNE 24 1988  
 SIGNED: [Signature]  
 L.S. No. 5296  
 STATE OF CALIFORNIA

COUNTY SURVEYOR'S CERTIFICATE  
 THE CORNER RECORD WAS RECEIVED BY ME AND EXAMINED AND FILED IN  
 BY: [Signature] No. C 21,281  
 TITLE: DEEDY CO. SURVEYOR  
 DOCUMENT No.         
 REGISTERED PROFESSIONAL ENGINEER  
 MICHAEL BAKER  
 CIVIL  
 STATE OF CALIFORNIA  
 No. 10/2990

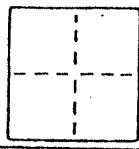
# CORNER RECORD

2 of 3

COUNTY OF MARIN T. \_\_\_\_\_ R. \_\_\_\_\_ MERIDIAN \_\_\_\_\_ CALIFORNIA

CORNER TYPE: GOVT. CORNER  MEANDER  RANCHO  CONTROL  OTHER

CORNER IDENTIFICATION — DATE OF VISIT 6-24 1988



CORNER — LEFT AS FOUND  FOUND AND TAGGED  REESTABLISHED OBLITERATED CORNER  REBUILT

PHYSICAL DESCRIPTION OF CORNER FOUND; EVIDENCE AND METHOD USED TO IDENTIFY OR REESTABLISH  
**CORNERS RESET PER FOUND MONUMENTS ON COVE & BEACH ROADS SHOWN ON 7 RM 69, 2 OS 124, 12 OS 34, 9 PM 64, & 10 PM 6.**

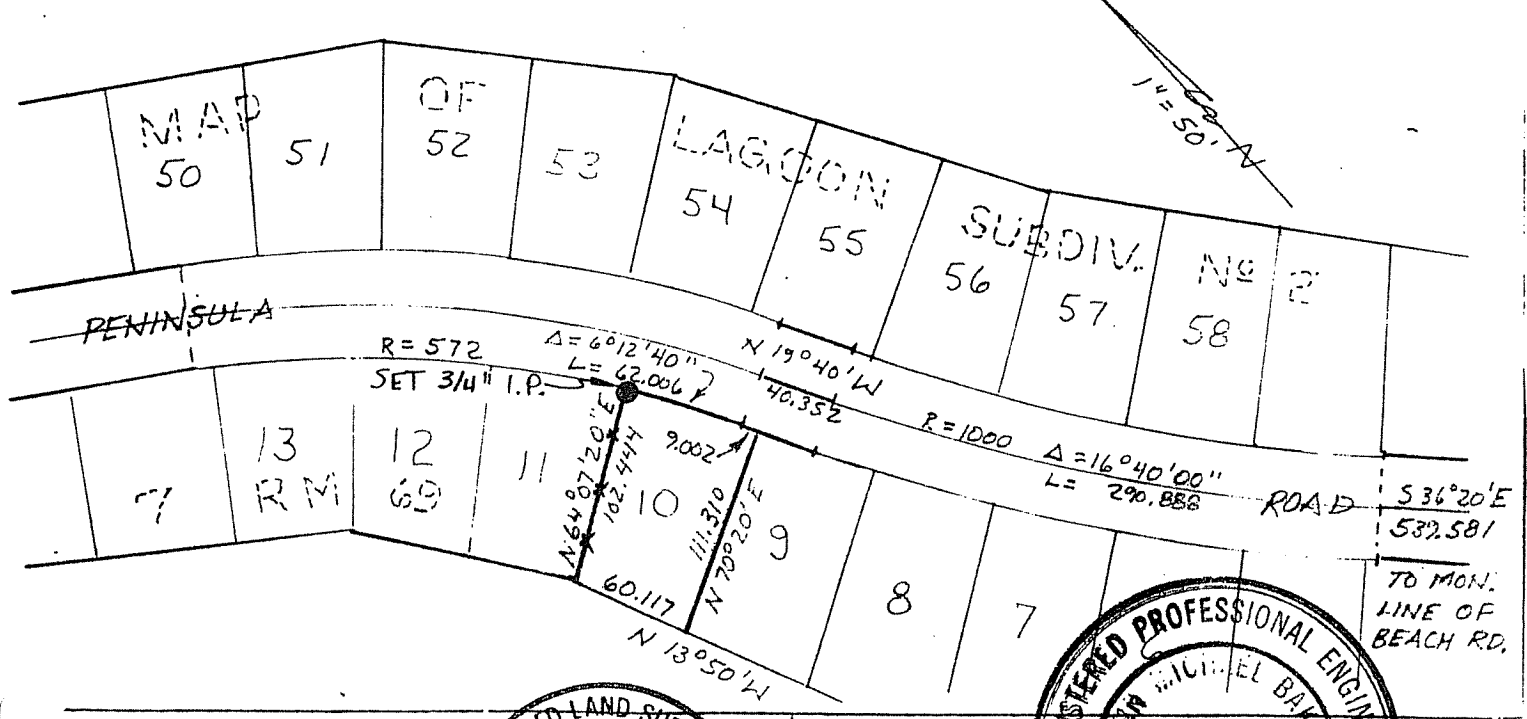
PHYSICAL DESCRIPTION OF MONUMENTS REBUILT OR PERPETUATED

**SET 3/4" IRON PIPE  
 TAGGED L.S. 5296**

**AP # 60-072-06**

CALIFORNIA COORDINATE SYSTEM ORDER: FIRST  SECOND  THIRD   
 STATIONS USED: NGS (USC & OS)  STATE  COUNTY  OTHER  STATION \_\_\_\_\_ STATION \_\_\_\_\_  
 ZONE \_\_\_\_\_ ELEVATION \_\_\_\_\_ NORTHINGS (T) \_\_\_\_\_ EASTINGS (X) \_\_\_\_\_

SKETCH: (Include reference tie or witness points, remarks and topo of area)



SURVEYOR'S CERTIFICATE  
 THIS CORNER RECORD WAS PREPARED BY STEVEN H. JACOBS FOR UNCLE  
 DIRECTION IN CONFORMANCE WITH THE SAID SURVEYORS ACT  
 ON JUNE 24 1988  
 L.S. No. 5296  
 SIGNED: [Signature]  
 L.S. No. 5296  
 STATE OF CALIFORNIA

COUNTY SURVEYOR'S CERTIFICATE  
 THE CORNER RECORD WAS RECEIVED AND EXAMINED AND FILED  
 ON NOV 21 201 1988  
 BY [Signature]  
 TITLE: DEPUTY COUNTY SURVEYOR  
 STATE OF CALIFORNIA  
 DOCUMENT No. \_\_\_\_\_  
 EXPIR. 10/26/90

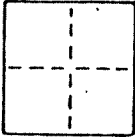
# CORNER RECORD

3 of 3

COUNTY OF MARIN T. \_\_\_\_\_ R. \_\_\_\_\_ MERIDIAN \_\_\_\_\_ CALIFORNIA

CORNER TYPE: GOVT. CORNER  MEANDER  RANCHO  CONTROL  OTHER

CORNER IDENTIFICATION — DATE OF VISIT 6-24 1988



CORNER — LEFT AS FOUND  FOUND AND TAGGED  REESTABLISHED OBLITERATED CORNER  REBUILT

PHYSICAL DESCRIPTION OF CORNER FOUND; EVIDENCE AND METHOD USED TO IDENTIFY OR REESTABLISH

**CORNERS RESET PER FOUND MONUMENTS ON COVE AND BEACH ROADS SHOWN ON 7 RM 69, 2 OS 124, 12 OS 34, 9 PM 64, & 10 PM 6.**

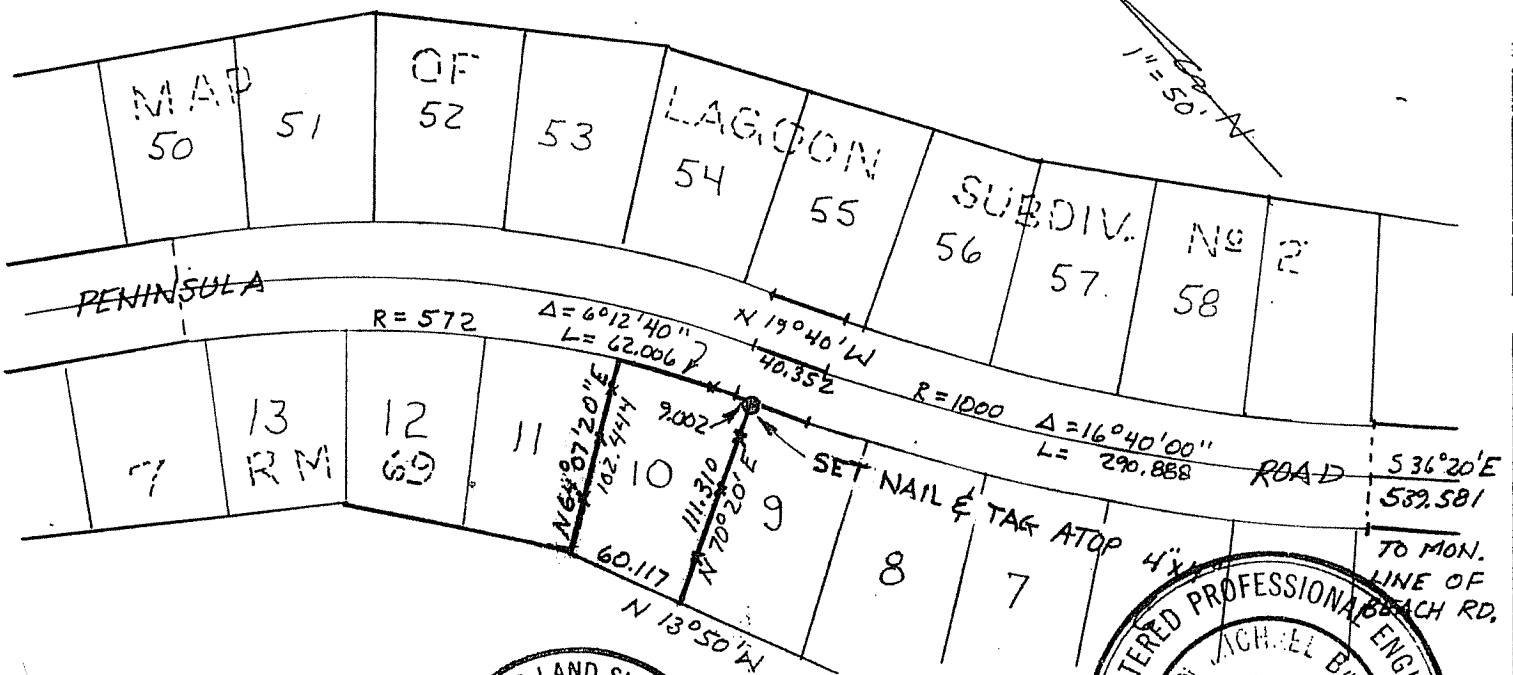
PHYSICAL DESCRIPTION OF MONUMENTS REBUILT OR PERPETUATED

**SET NAIL & TAG L.S. 5296 ON TOP OF 4"x4" AT FENCE COR.**

**AP# 60-072-06**

CALIFORNIA COORDINATE SYSTEM ORDER: FIRST  SECOND  THIRD   
 STATIONS USED: NGS (USC & OS)  STATE  COUNTY  OTHER  STATION \_\_\_\_\_ STATION \_\_\_\_\_  
 ZONE \_\_\_\_\_ ELEVATION \_\_\_\_\_ NORTHINGS (Y) \_\_\_\_\_ EASTINGS (X) \_\_\_\_\_

SKETCH: (Include reference tie or witness points, remarks and topo of area)



**SURVEYOR'S CERTIFICATE**  
 THIS CORNER RECORD WAS PREPARED BY STEVEN H. JACOBS OF THE NAME OR UNDER THE DIRECTION IN CONFORMANCE WITH THE LAND SURVEYORS ACT ON JUNE 24 1988 296

SIGNED: [Signature]  
 L.S. or R.C.E. No. L.S. 5296  
 STATE OF CALIFORNIA

**COUNTY SURVEYOR'S CERTIFICATE**  
 THE CORNER RECORD WAS RECEIVED AND EXAMINED AND FILED BY [Signature] DEPUTY CIVIL ENGINEER

DOCUMENT No. \_\_\_\_\_  
 STATEMENT ON BACK OF SHEET  
 REGISTERED PROFESSIONAL ENGINEER  
 MICHAEL BREER  
 STATE OF CALIFORNIA  
 EXPIRES 10/26/90