

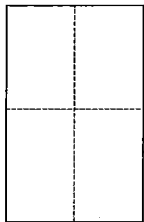
CORNER RECORD

Document Number 060-063-06

City of Tiburon

County of Marin, California

Brief Legal Description Lot 15, Lagoon Subdivision No.7, filed in Book 8 of Maps, at Page 104, Marin County Records.



CORNER TYPE

Government Corner Control
Meandered Property
Rancho Other
Date of Survey _____

COORDINATES (Optional)

N. _____
E. _____
Zone _____ NAD27 NAD83
NAD83 Epoch _____
Elev. _____
Vert. Datum: NGVD29 NAVD88
Meas. Units: Metric Imperial

Corner - Left as found Found and tagged Established Reestablished Rebuilt

Identification and type of corner found: Evidence used to identify or procedure used to establish or reestablish the corner:
Found Centerline Monuments along Lagoon Rd. to be in good condition and used to reestablish the four corners of Lot 15.

A description of the physical condition of the monument as found and as set or reset:
Set (3) Brass Tags LS7237, and (1) 1/2" Iron Pipe LS7237, as Witness Corners, as shown on attached Exhibit of said Lot 15.

SURVEYOR'S STATEMENT

This Corner Record was prepared by me or under my direction in conformance with the Land Surveyor's Act on APRIL 4, 2015
Signed Michael E. Ford P.L.S. or R.C.E. No. 7237

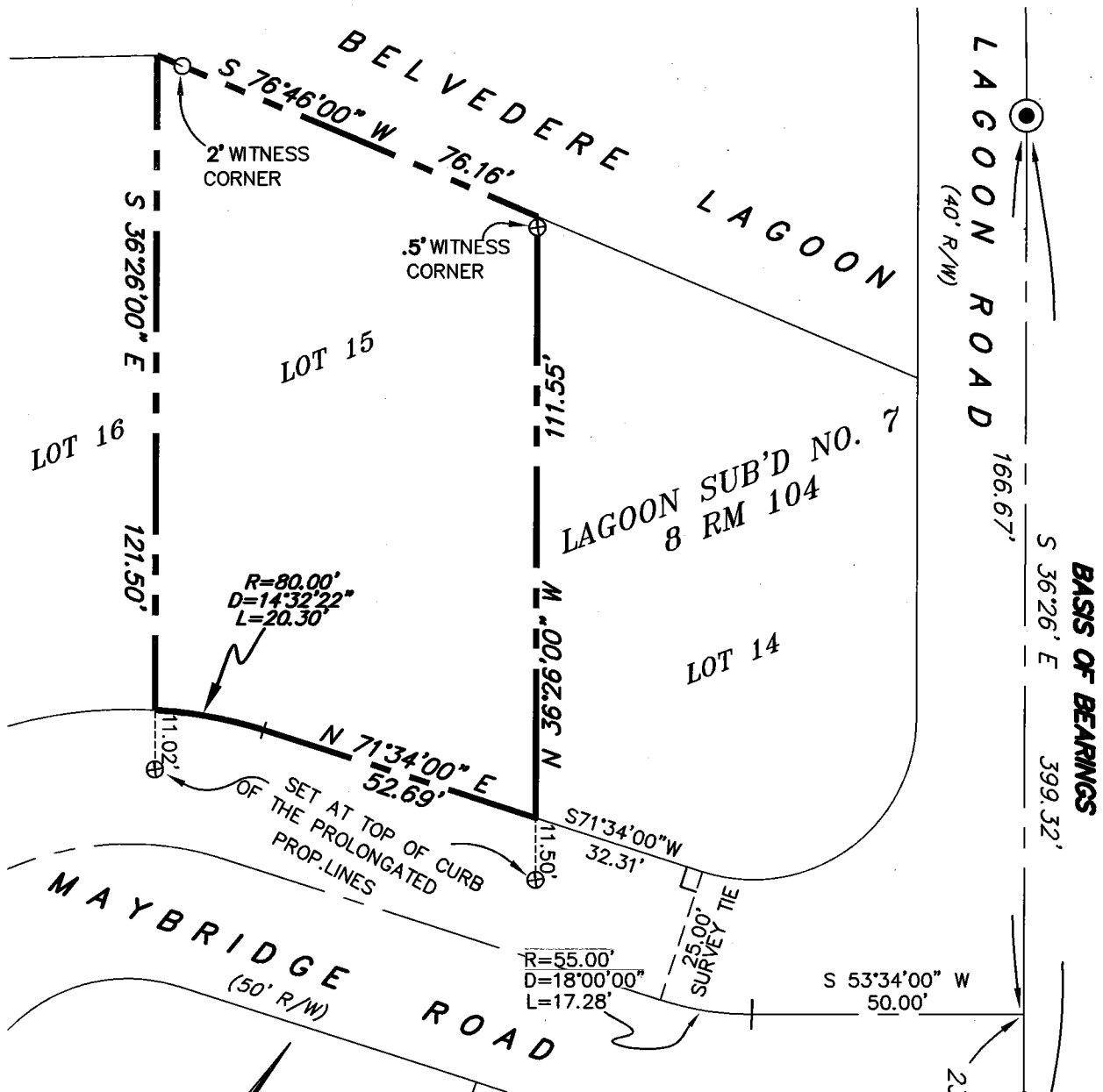


COUNTY SURVEYOR'S STATEMENT

This Corner Record was received APRIL 6, 2015
and examined and filed APRIL 21, 2015
Signed Richard G. Simonitch P.L.S. or R.C.E. No. 7821
Title DEPUTY



County Surveyor's Comment



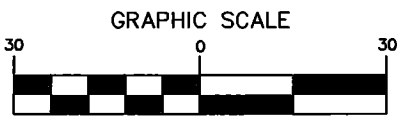
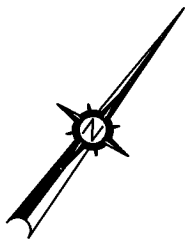
BASIS OF BEARINGS

LEGEND

- ⊙ FOUND CL STREET MONUMENT, 2" BRASS DISK, PUNCHED
- SET .5" IRON PIPE LS7237
- ⊗ SET BRASS TAG LS7237

BASIS OF BEARINGS

S 36°26' E BETWEEN FOUND CENTERLINE STREET MONUMENTS, AS SHOWN ON LAGOON SUB'D NO.7, FILED IN 8 RM 104, MARIN COUNTY RECORDS.



(IN FEET)
1 inch = 30 ft.

NOTE:

ALL COURSES SHOWN HEREON ARE RECORD AND MEASURED PER 8 RM 104, M.C.R.



2300 bethards drive, suite J
santa rosa, california 95405
p 707.542.8513 - f 707.542.1825
www.michaelfordinc.com