

CORNER RECORD

COUNTY OF Merced T. _____ R. _____ MERIDIAN CALIFORNIA

CORNER TYPE: GOVT. CORNER MEANDER RANCHO CONTROL OTHER

CORNER IDENTIFICATION — DATE OF VISIT July 19 1989

Monuments per map 8 R.M. 104

Centerline Lagoon Road
Near #48 & #50 and #56 & #62 Lagoon Road, City of
AP 60-062-04, 05, 02 & 14 Belvedere

CORNER — LEFT AS FOUND FOUND AND TAGGED REESTABLISHED OBLITERATED CORNER REBUILT

PHYSICAL DESCRIPTION OF CORNER FOUND; EVIDENCE AND METHOD USED TO IDENTIFY OR REESTABLISH

Found 1" pipes with tag L.S. 2488

Offset during repaving

Original position perpetuated, distances not verified

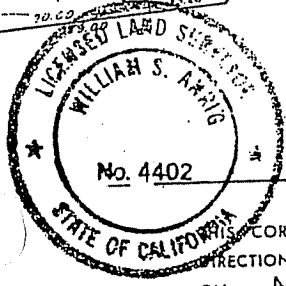
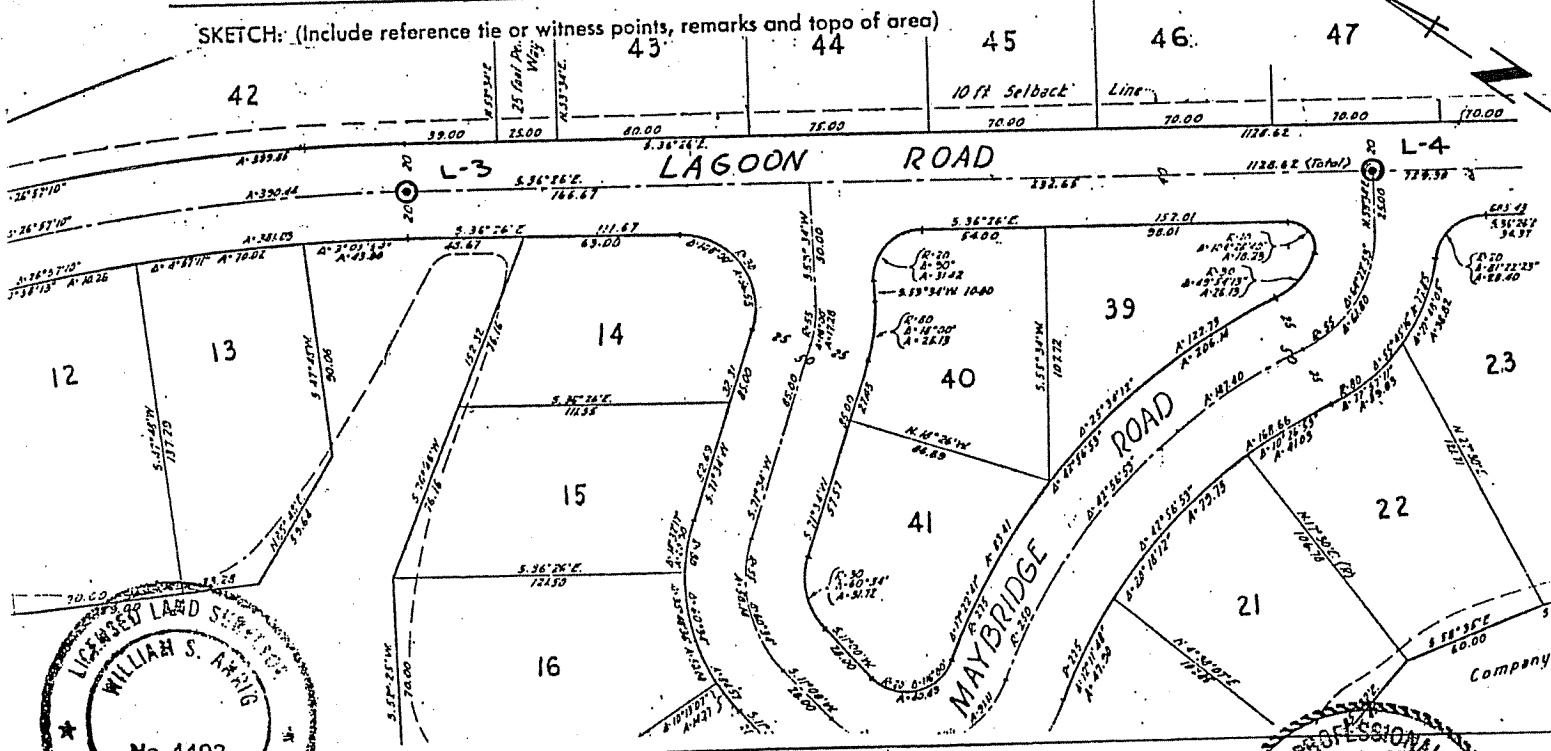
PHYSICAL DESCRIPTION OF MONUMENTS, REBUILT OR PERPETUATED

Standard cast iron street monument

CALIFORNIA COORDINATE SYSTEM ORDER: FIRST SECOND THIRD

STATIONS USED: NGS (USC & GS) STATE COUNTY OTHER STATION _____ STATION _____

ZONE _____ ELEVATION _____ NORTHINGS (Y) _____ EASTINGS (X) _____



SURVEYOR'S CERTIFICATE

CORNER RECORD WAS PREPARED BY ME OR UNDER MY DIRECTION IN CONFORMANCE WITH THE LAND SURVEYORS ACT ON NOVEMBER 1 1990.

SIGNED: William S. Arwig

L.S. or R.C.E. No.: L.S. 4402 EXP 9-30-93

COUNTY SURVEYOR'S CERTIFICATE

THE CORNER RECORD WAS RECEIVED AND EXAMINED AND FILED BY: _____ TITLE: _____

DOCUMENT No. _____

STATEMENT ON BACK OF SHEET

NO

