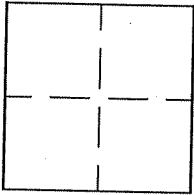


CORNER RECORD

Document Number A.P.# 060-051-40City of BELVEDERECounty of MARIN, CaliforniaBrief Legal Description LOT 34 8 RM 104**CORNER TYPE****COORDINATES (Optional)**

Government Corner Control
 Meander Property
 Rancho Other
 Date of Survey 00/00/00

N. _____
 E. _____
 Zone _____ NAD27 NAD83
 NAD83 Epoch _____
 Elev. _____
 Vert. Datum: NGVD29 NAVD88
 Meas. Units: Metric Imperial

Corner- Left as found Found and tagged Established Reestablished Rebuilt

Identification and type of corner found: Evidence used to identify or procedure used to establish or reestablish the corner:
ESTABLISHED BOUNDRY CORNERS AS SHOWN ON 8 RM 104.

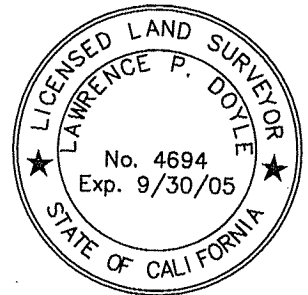
A description of the physical condition of the monument as found and as set or reset: SEE SHEET 2.

SURVEYOR'S STATEMENT

This Corner Record was prepared by me or under my direction in conformance with

the Land Surveyor's Act on JULY 2 2007

Signed Lawrence P. Doyle P.L.S. or R.C.E. No. P.L.S. 4694

**COUNTY SURVEYOR'S STATEMENT**

This Corner Record was received JULY 18, 2007

and examined and filed SEPTEMBER 12, 2007

Signed [Signature] P.L.S. or R.C.E. No. 7128

Title COUNTY SURVEYOR

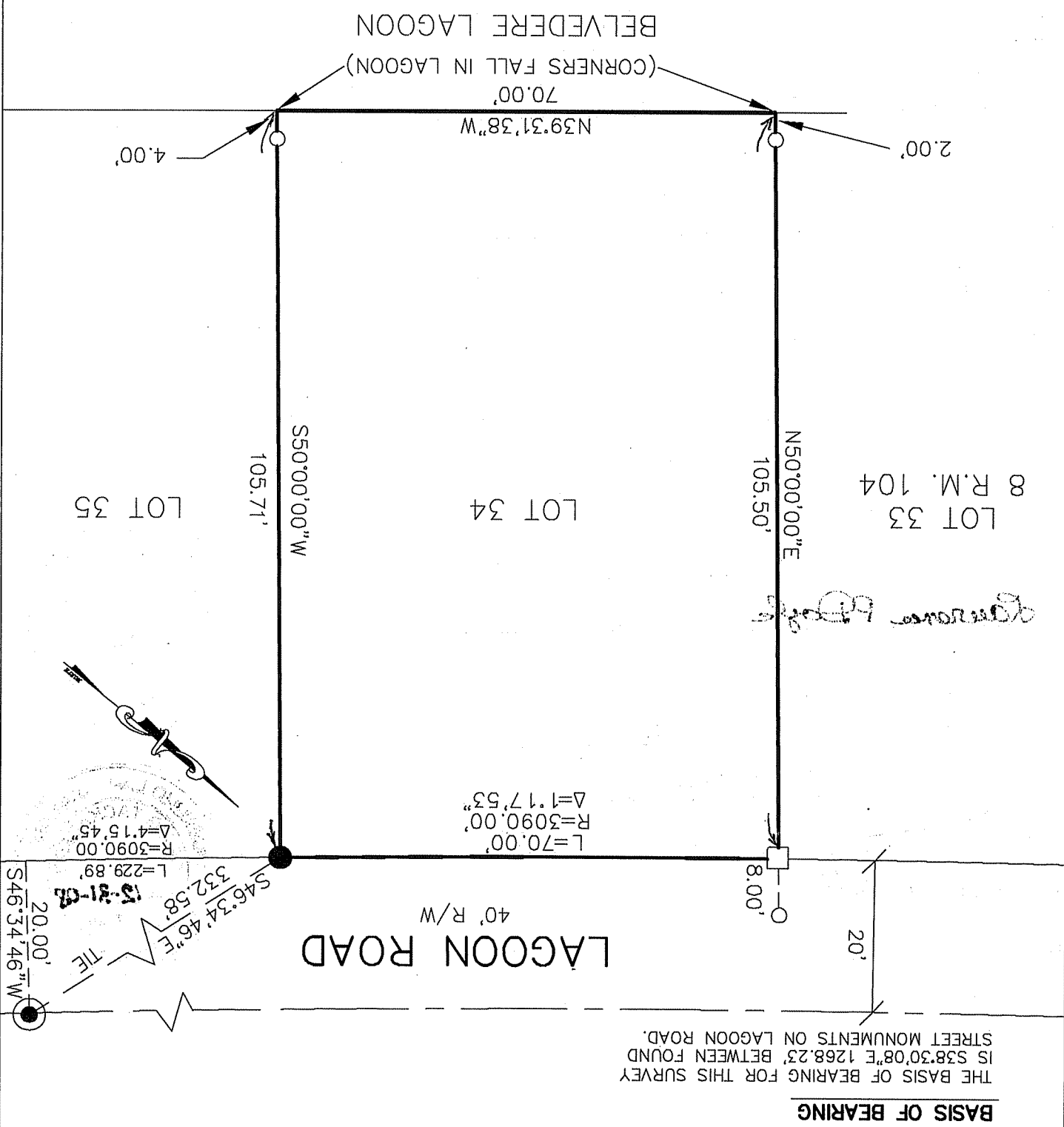
County Surveyor's Comment _____



CORNER RECORD
 LOT 34 / 8 RM 104
 BELVEDERE MARIN COUNTY CALIFORNIA
 SCALE: 1" = 20'
 DATE: 06/29/07
 LAWRENCE P. DOYLE
 DRAWN BY:
 SHEET 2 OF 2
 LAND SURVEYOR/CIVIL ENGINEER
 100 HELENS LANE MILL VALLEY CA 94941 (415-388-9585)
 DRAWING NO. 1662



- LEGEND**
- FOUND STREET MONUMENT
 - FOUND PIPE AND TAG L.S. 2734
 - SET NAIL AND TAG L.S. 4694
 - SET HUB AND TAG L.S. 4694



THE BASIS OF BEARING FOR THIS SURVEY IS S38°30'08\"E 1268.23' BETWEEN FOUND STREET MONUMENTS ON LAGOON ROAD.

BASIS OF BEARING