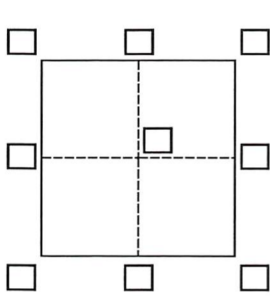


CORNER RECORD

Agency Index DPD # 21-042
 Document Number 060-031-43

City of BELVEDERE County of MARIN, California
 Brief Legal Description Lot 18, Map of lagoon Subdivision no.3, 6 maps 71, M.C.R., APN 060-031-43



CORNER TYPE

Government Corner Control Elevation
 Meander Property Units Metric U.S. Survey Foot
 Rancho Other Horizontal Datum _____
 Date of Survey August 8, 2020 Zone _____ Epoch Date _____
 Vertical Datum _____
 Complies with Public Resources Code §§8801-8819
 Complies with Public Resources Code §§8890-8902

PLS Act Ref.: 8765(d) 8771 8773 Other: _____
 Corner/Monument: Left as found Established Rebuilt Pre-Construction
 Found and tagged Reestablished Referenced Post-Construction

Narrative of corner identified and monument as found, set, reset, replaced, or removed:
 See sheet #2 for description(s):

Found centerline monuments and brass tag LS 6784 as shown on Record of Survey 2005 maps 342 in good condition and record position and used to reestablish the most westerly corner of Lot 18.

SURVEYOR'S STATEMENT

This Corner Record was prepared by me or under my direction in conformance with the Professional Land Surveyors' Act on August 14, 2020.
 Signed Michael E. Ford P.L.S. or R.C.S. No. 7237



COUNTY SURVEYOR'S STATEMENT

This Corner Record was received FEB. 24, 2021 and examined and filed MAY 19, 2021.
 Signed T.W. Park P.L.S. or R.C.S. No. 8176
 Title COUNTY SURVEYOR



County Surveyor's Comment

SAN RAFAEL AVENUE 50' R/W

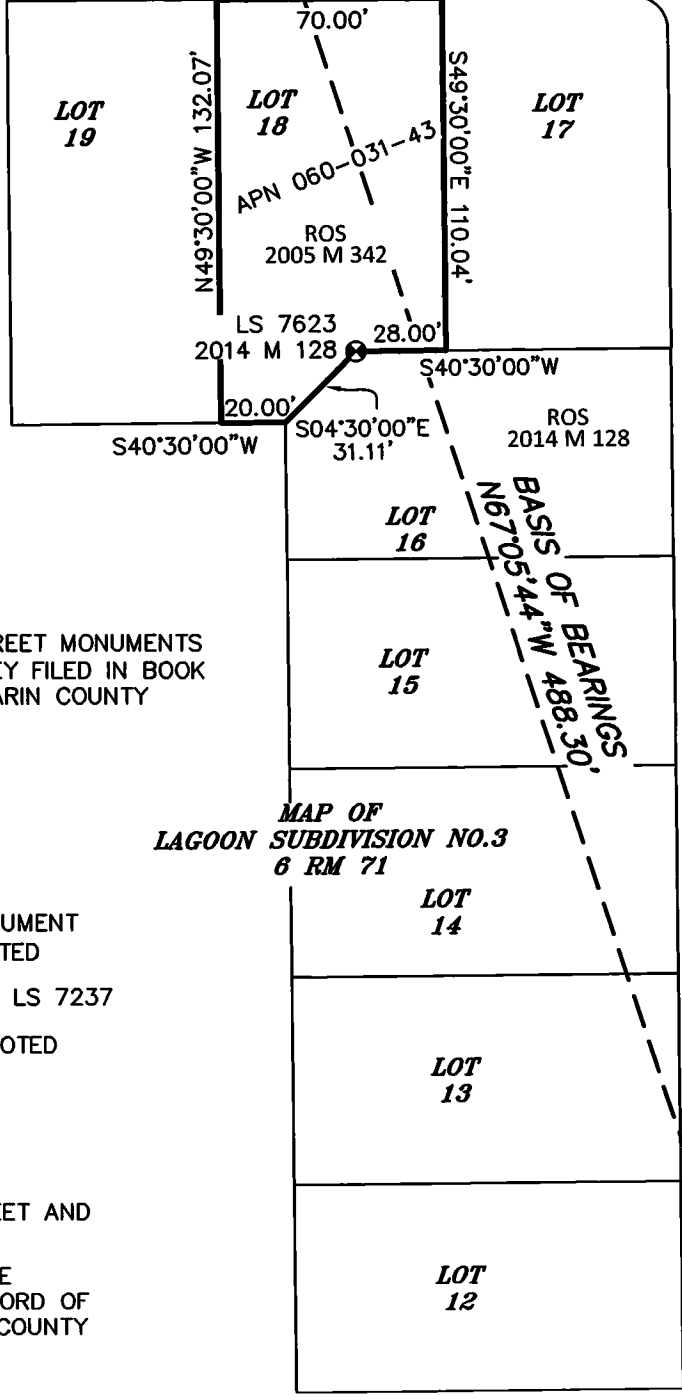
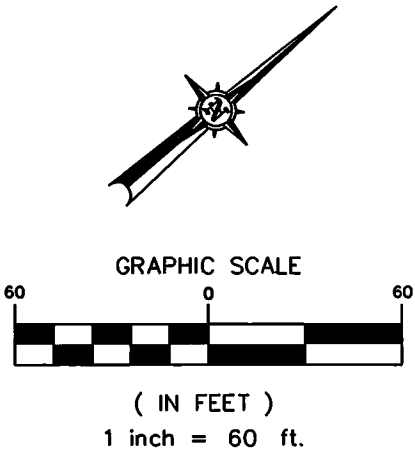
SURVEY TIE
N66°22'08"E
58.47'

ILLEGIBLE, CONCRETE
COVERS EDGE OF
BRASS DISC

S49°30'00"E
8.00'

S40°31'30"W 147.61'

LS 6784 2005 M 342
S49°28'30"E 5.00'



EDGEWATER ROAD 54' R/W

S49°30'00"E
465.39'

BASIS OF BEARINGS

N67°05'44"W BETWEEN FOUND STREET MONUMENTS AS SHOWN ON RECORD OF SURVEY FILED IN BOOK 2005 OF MAPS AT PAGE 342, MARIN COUNTY RECORDS.

LEGEND

- FOUND STREET WELL MONUMENT WITH BRASS DISC, AS NOTED
- ⊗ SET BRASS TAG & RIVET, LS 7237
- ⊙ FOUND BRASS TAG, AS NOTED

NOTES:

ALL DISTANCES SHOWN ARE IN FEET AND DECIMALS THEREOF.

ALL COURSES SHOWN HEREON ARE RECORD AND MEASURED PER RECORD OF SURVEY 2005 MAPS 342, MARIN COUNTY RECORDS.

MAP OF
LAGOON SUBDIVISION NO.3
6 RM 71

2" DISC LS 4402



2300 bethards drive, suite J
santa rosa • california 95405
p 707.542.8513 - f 707.542.1825
www.michaelfordinc.com