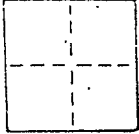


CORNER RECORD

COUNTY OF Marin T. _____ R. _____ MERIDIAN _____ CALIFORNIA
 CORNER TYPE: GOV'T. CORNER MEANDER RANCHO CONTROL OTHER
 CORNER IDENTIFICATION — DATE OF VISIT June 19 89



Monument per 6 R.M. 71

Near #15 Edgewater Road, City of Belvedere

AP60-031-10

CORNER — LEFT AS FOUND FOUND AND TAGGED REESTABLISHED OBLITERATED CORNER REBUILT

PHYSICAL DESCRIPTION OF CORNER FOUND; EVIDENCE AND METHOD USED TO IDENTIFY OR REESTABLISH

Found railroad spike with stamped cross

Offset during repaving

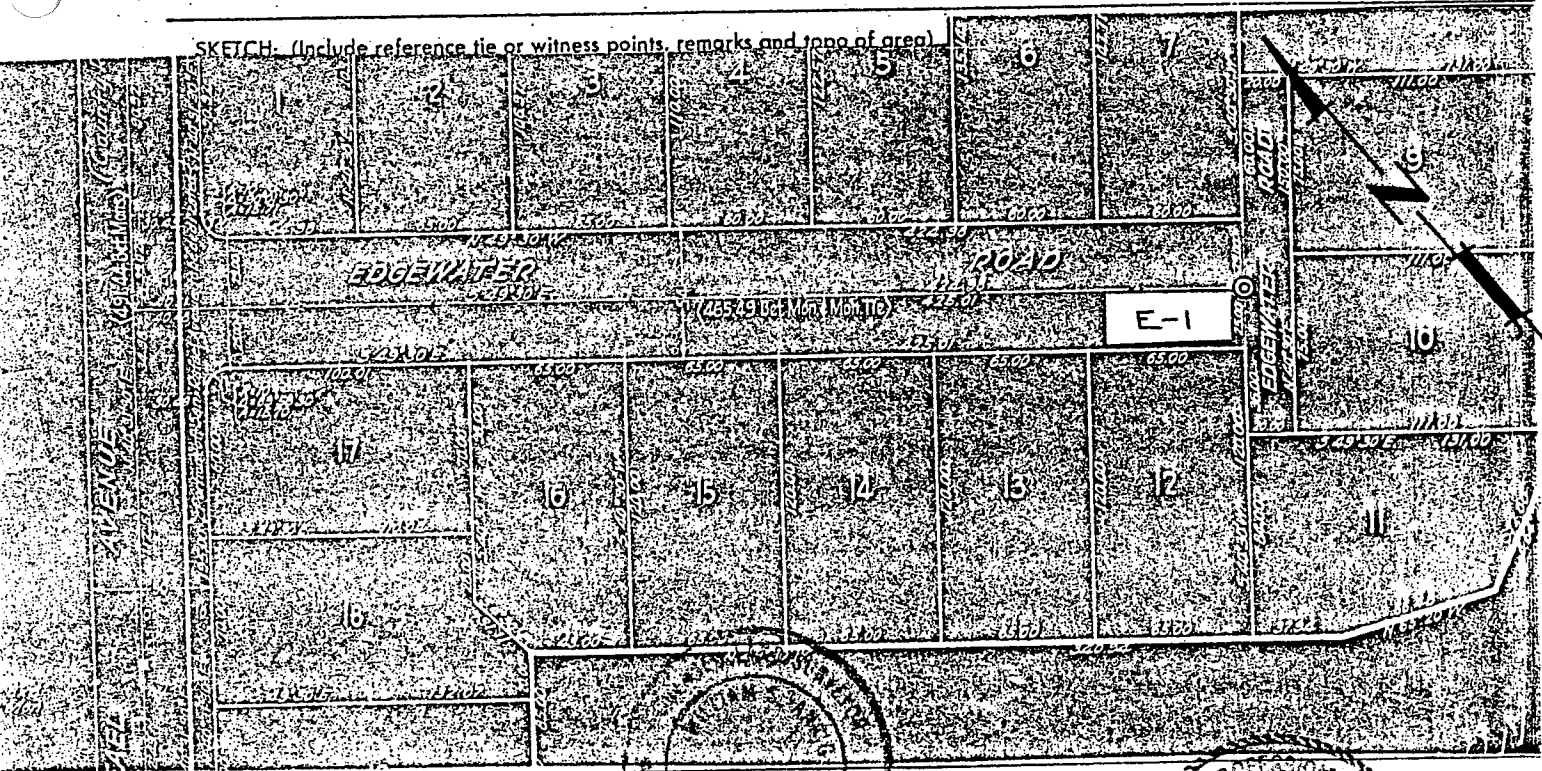
Original position perpetuated, distances not verified

PHYSICAL DESCRIPTION OF MONUMENTS, REBUILT OR PERPETUATED

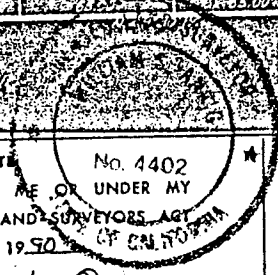
Standard cast iron street monument

CALIFORNIA COORDINATE SYSTEM ORDER: FIRST SECOND THIRD
 STATIONS USED: NGS (USC & GS) STATE COUNTY OTHER STATION _____ STATION _____
 ZONE _____ ELEVATION _____ NORTHINGS (Y) _____ EASTINGS (X) _____

SKETCH: (Include reference tie or witness points, remarks and topo of area)



SURVEYOR'S CERTIFICATE
 THIS CORNER RECORD WAS PREPARED BY ME OR UNDER MY DIRECTION IN CONFORMANCE WITH THE LAND SURVEYORS ACT OF CALIFORNIA ON NOVEMBER 1 1990.
 SIGNED: William J. Orr
 L.S. or R.C.E. No. L.S. 4402 EXP 9-30-93



COUNTY SURVEYOR'S CERTIFICATE
 THE CORNER RECORD WAS RECEIVED 11/15 1990 AND EXAMINED AND FILED BY: [Signature]
 TITLE: [Signature]
 DOCUMENT No. _____
 STATEMENT ON BACK OF SHEET OF CALIFORNIA YES NO

